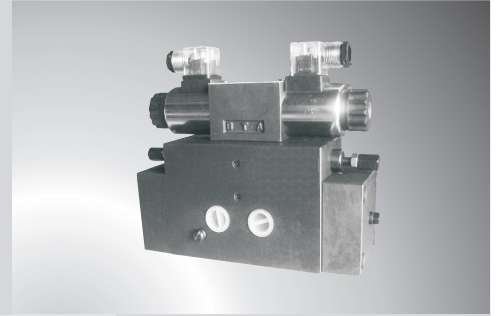


Surface Grinding valve

Series Type T4WEH-12-SG

Max. Flow: 30lpm / 40lpm

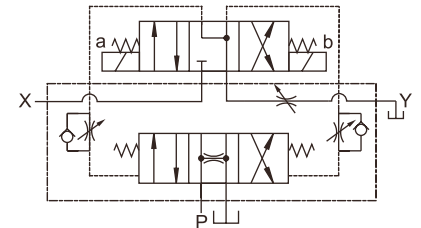
Voltage: Ac110v / Ac220v / Dc24v



Specification:

Solenoid controlled Pilot operated direction control valve for shock less type of machine tool applications demanding smooth reversal. Mechanical screw to adjust the spool shifting time. hence optimizing shocks to the machines, reducing oil hammering / piping vibration / jerks and machine vibration.

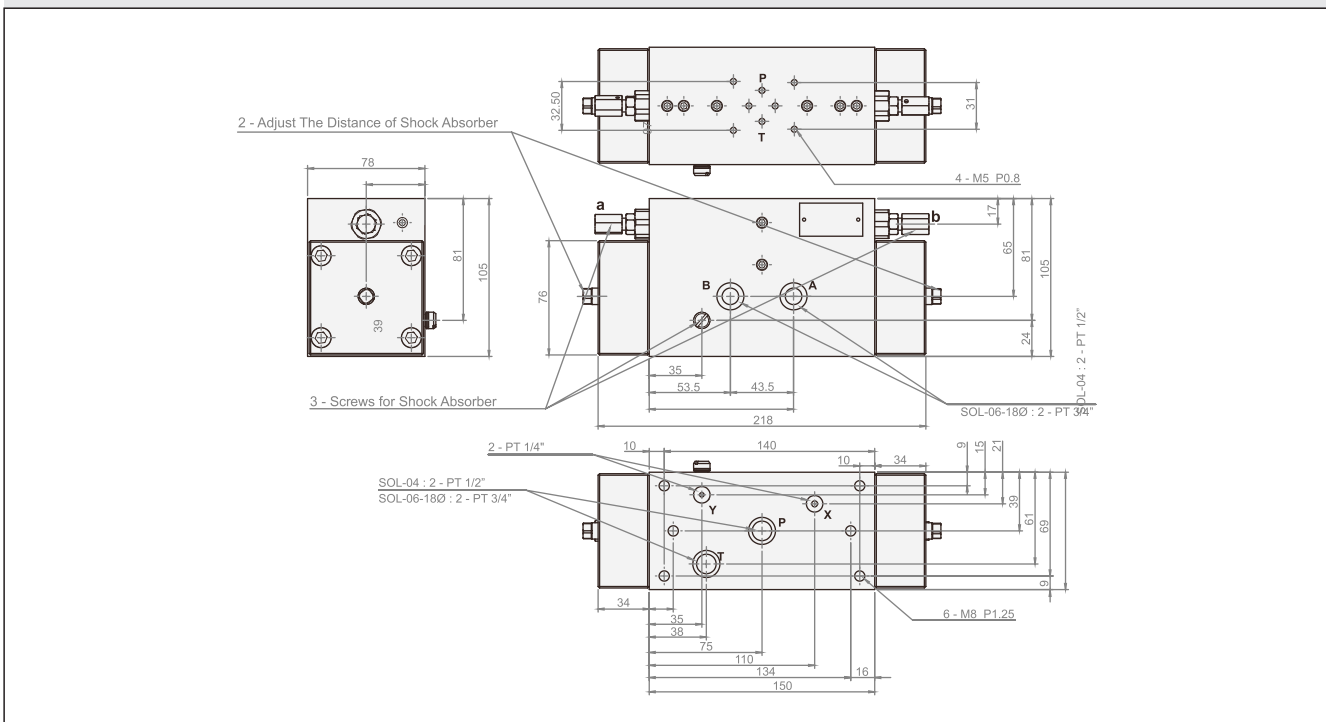
Voltage: Ac110v / Ac220v / Dc24v



Features:

Spool Stroke Adjustment Screw + meter out pilot oil flow adjustment screw + pilot oil tank line throttle adjustment screw makes a combination of valve suitable for these type of application, Highly suitable for surface grinding machine applications & others.

Unit Dimensions T4WEH-12-SG

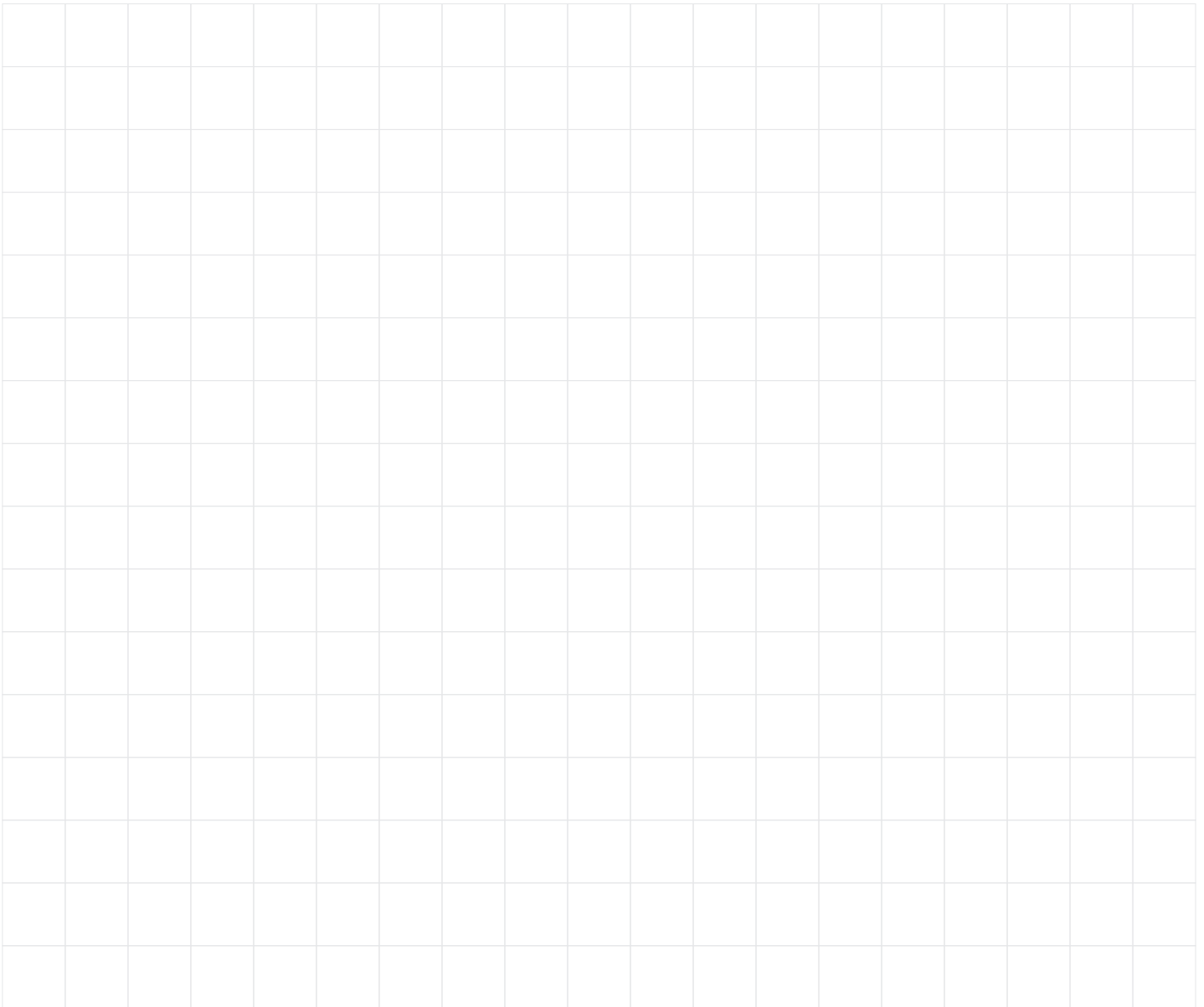


Technical data

Model	Rated Flow Capacity (l/min)	Max. Pressure (kg/cm ²)	Thread Connection (PT)	Weight (kg)
T4WEH-12-SG	30	40	1/2"	11.3
T4WEH-16-SG	45	40	3/4"	11.3



THM



The specified data is for product description purposes only and may not be deemed to be guaranteed unless expressly confirmed in the contract.



THM

THM Huade Hydraulics (P) Ltd

F-127, Focal Point, Phase VIII

Ludhaiana-141010, India

Phone: 0091+161+2672777, Fax: 0091+161+2672778

www.thmhuade.com

info@thmhuade.com, sales@thmhuade.com
