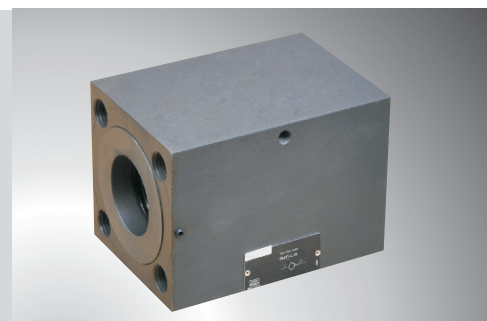


S...T1X

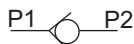
Size 52 to 150
Up to 31.5 MPa
Up to 15000 L/min



Introduction

- Sub-plate mounting (Sizes 52 to 82)
- Flange connection (Sizes 52 to 150)
- Leakage - free closure in one direction
- Various cracking pressure, optional (see ordering details)

Symbol :



Function and symbols

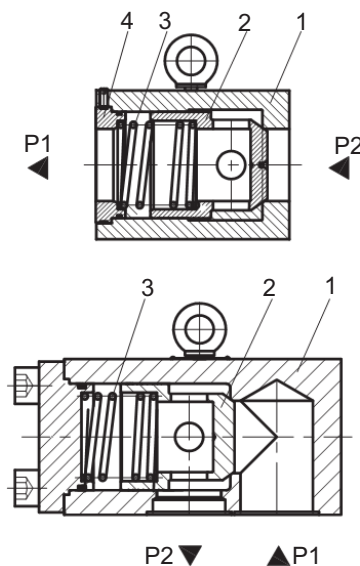
The check Valve type S is used to permit free flow in one direction and to be closed in opposite direction with leakage-free.

It basically comprises of the housing (1), poppet (2) and the compression spring (3) and the spring seat (4).

The stroke of the poppet (2), which is guided on its outside diameter, is limited by a mechanical stop----the spring seat(4). The built-in compression spring (3) supports the closing movement. furthermore the compression spring (3) holds the poppet (2) in the closed position even when there is no flow through the valve.

When fluid flows through the valve in the opening direction, the poppet (2) lifts due to the fluid pressure. In the opposite direction the compression spring (3) and the fluids presses the poppet (2) onto its seat (4) and thus closes the connection.

As for the check valve without spring, the fixing position should ensure that the poppet can locate itself closed under its deadweight.



Ordering details

	S				T1X	
Check Valve	= S					
Nominal Size 52	= 52					
Nominal Size 62	= 62					
Nominal Size 82	= 82					
Nominal Size 102	= 102					
Nominal Size 125	= 125					
Nominal Size 150	= 150					
Flange connection		= F				
Sub-plating mounting (Size 52 to 82)		= P				
					No code =	NBR seals
					V =	FPM seals
					T1X =	Series T10 to T19 (T10 to T19: unchanged installation and connection dimensions)
					0 =	without spring
					1 =	Cracking pressure 0.05 Mpa
					2 =	Cracking pressure 0.15 Mpa (Not for nominal sizes 125 to 150)
					3 =	Cracking pressure 0.3 Mpa (Not for nominal sizes 125 to 150)

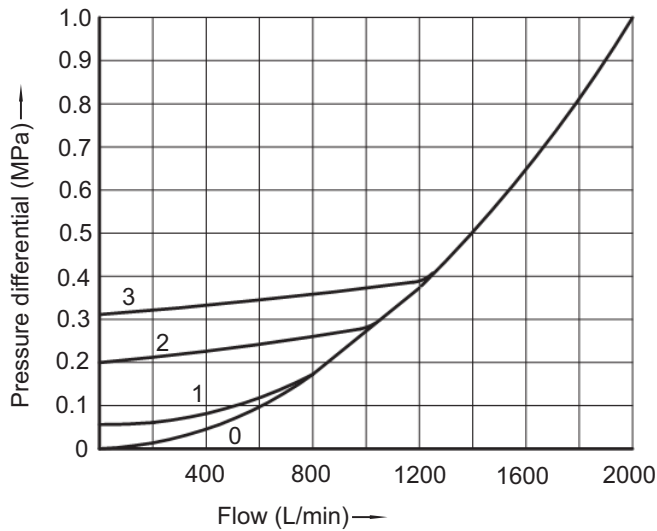
Technical Data

Max. operating pressure	MPa	31.5					
Cracking pressure	MPa	Refer to the characteristic curve					
Max. flow-rate	L/min	Refer to the characteristic curve					
Viscosity range	mm ² /s	2.8 to 500					
Fluid temperature range	°C	-30 to +80 (NBR seal)					
		-20 to +80 (FPM seal)					
Fluid	Mineral oil suit for NBR and FPM seal						
	Phosphate ester for FPM seal						
Degree of contamination	Maximum permissible degree of fluid contamination : Class 9. NAS 1638 or 20/18/15, ISO4406						
Size		52	62	82	102	125	150
All flange connection	LC 455						

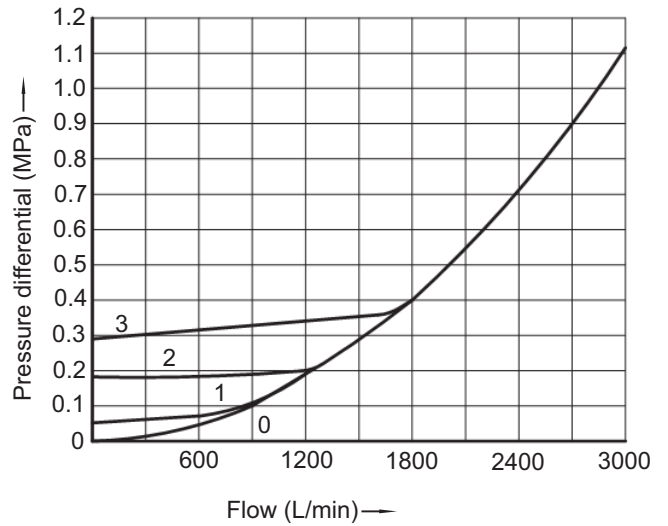
Characteristic Curve (Measured at $t=40^{\circ}\text{C} \pm 5^{\circ}\text{C}$, using HLP46)

Pressure difference P in relation to the flow Q at opening pressure

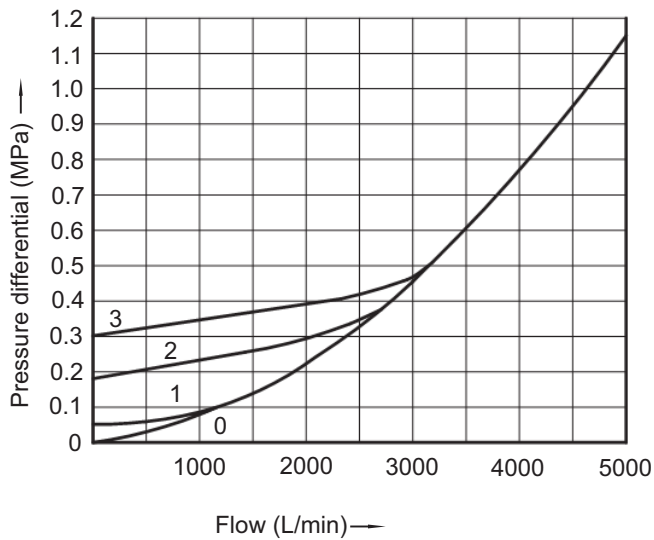
Size 52



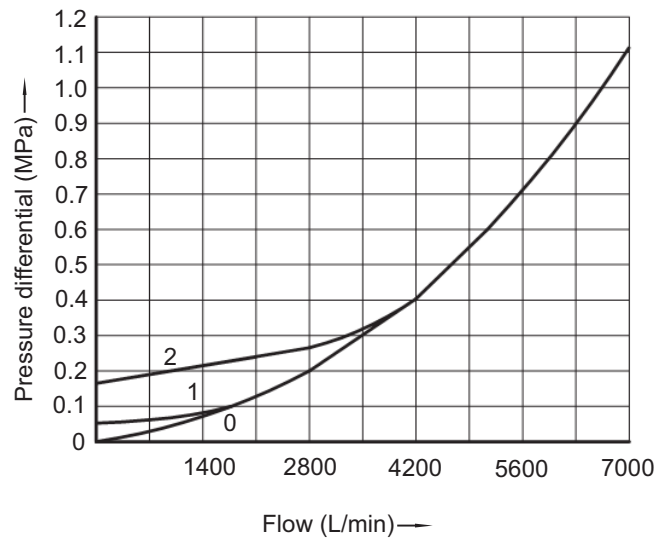
Size 62



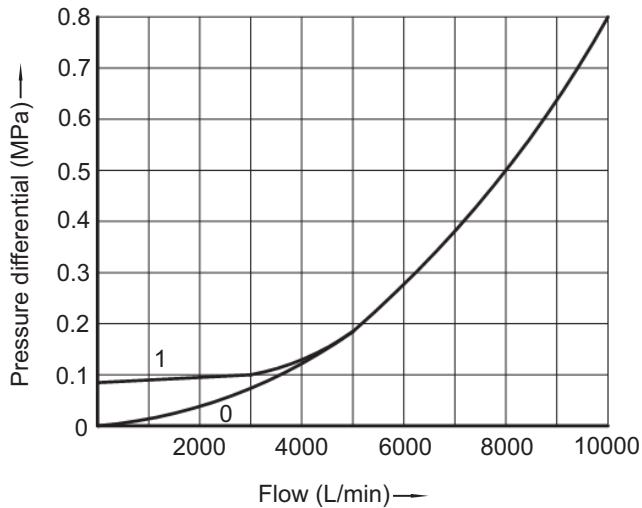
Size 82



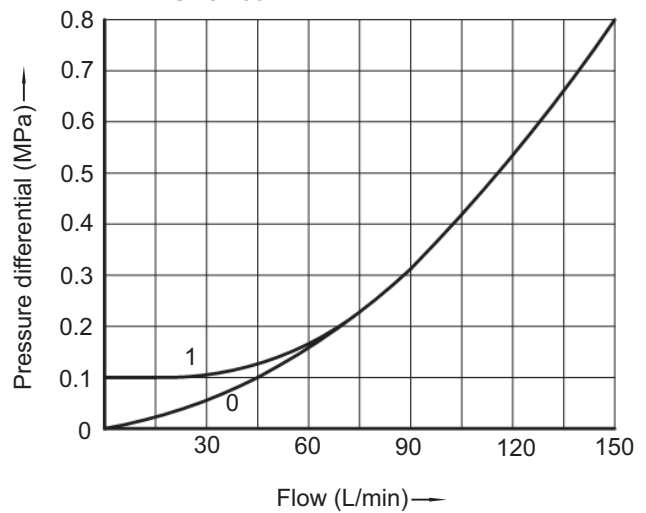
Size 102



Size 125

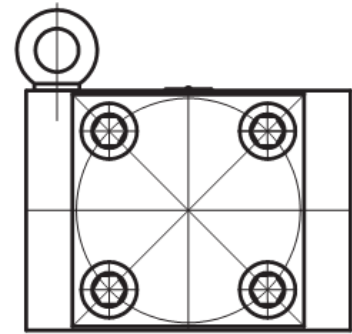
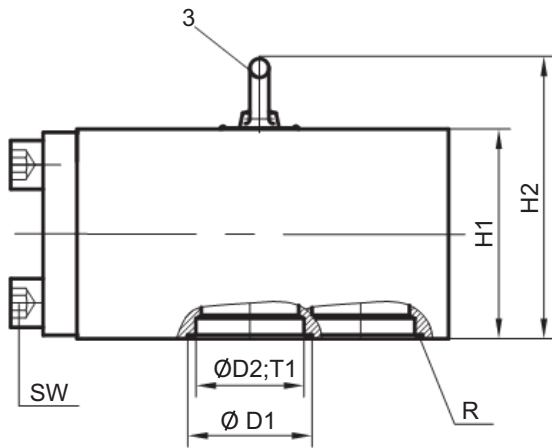


Size 150

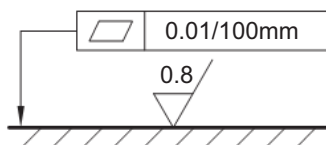
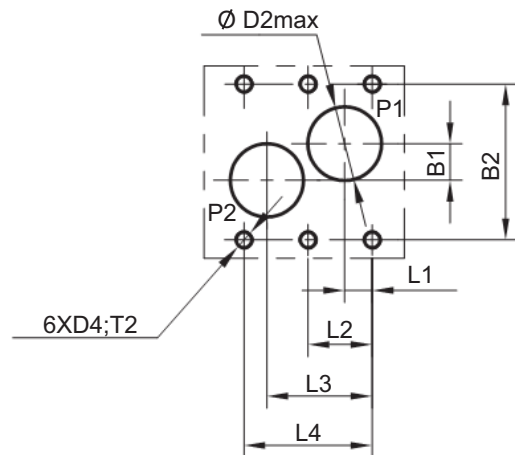
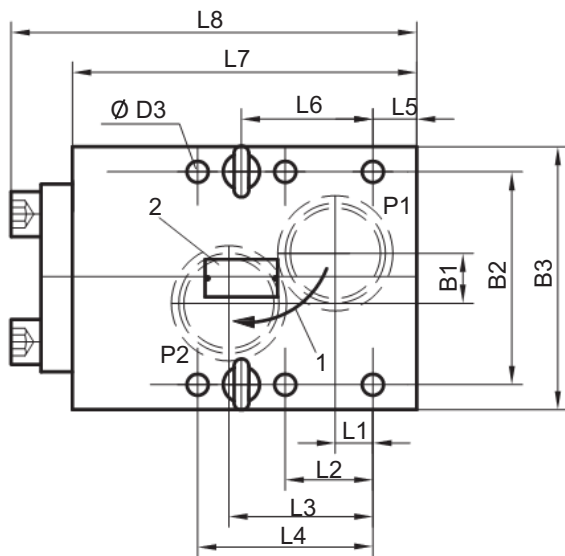


Unit Dimensions : sub-plate mounting

(Dimensions in mm)



1. Free flow in direction of arrow
2. Name plate
3. Eyebolt for transport
 - 1 pcs with sizes 52 and 62
 - 2 pcs with sizes 82



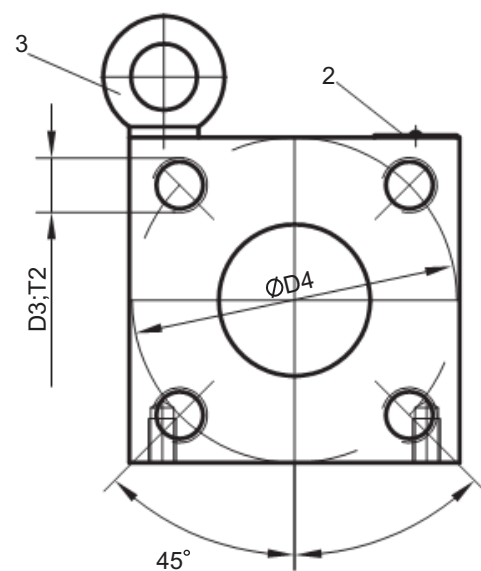
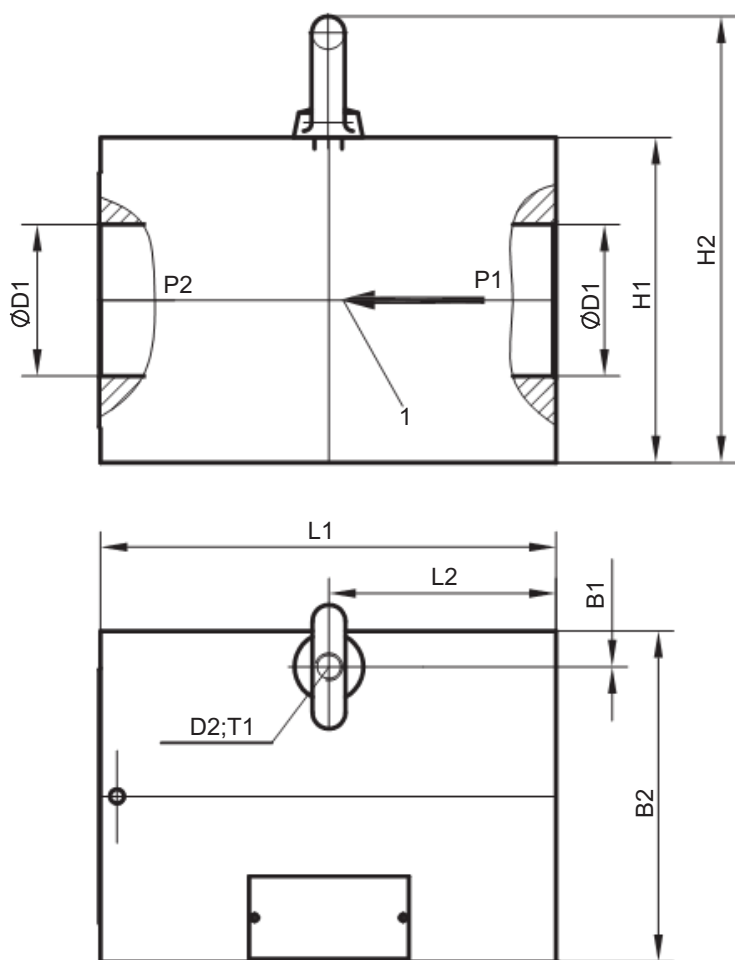
Requirement for mounting surface

O-ring	D4,T2	Valve fixing screws	M _A (Tightening torque)
54X3	M16,32	GB/T70.1-M16X130	310Nm
63.1X3.53	M20,40	GB/T70.1-M20X160	620Nm
85.32X3.53	M20,40	GB/T70.1-M20X190	620Nm

Size	B1	B2	B3	ØD1	ØD2	ØD3	H1	H2	L1	L2	L3	L4	L5	L6	L7	L8	T1	A/F	Weight kg
52	40	115	145	60	50	18	105	141	25	50	77	100	12	75	172	207	2.3	14	20
62	40	140	180	70	60	22	125	161	34	65	100	128	17.5	96	220	263	2.7	17	38
82	50	170	210	92	80	22	155	191	30	70	115	140	35	105	275	325	2.7	19	70

Unit Dimensions : flange connection sizes 52 to 102

(Dimensions in mm)

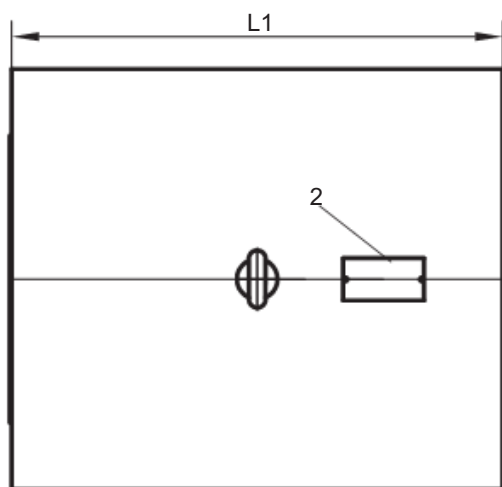
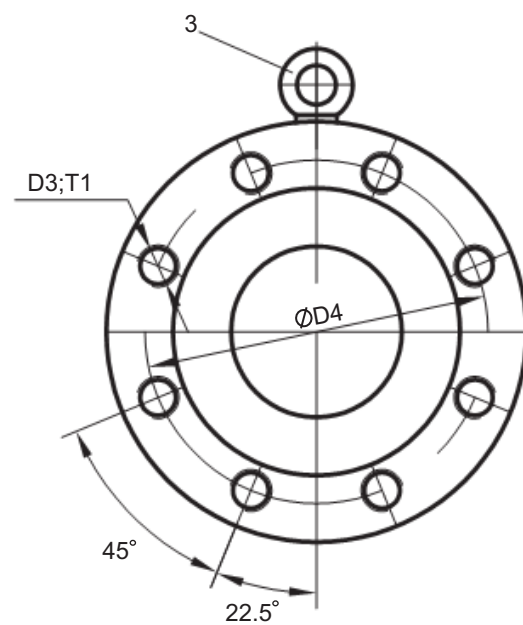
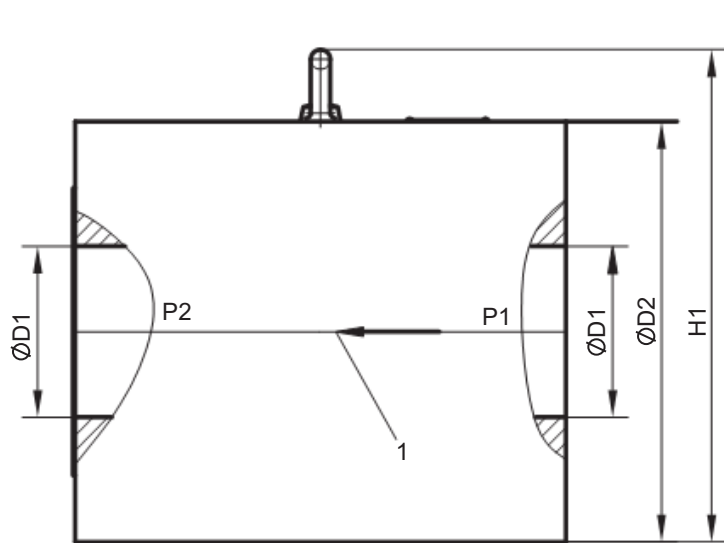


1. Free flow in direction of arrow
2. Name plate
3. Eyebolt for transport
 - For suitable connection flanges see Lc455

Size	B1	B2	ØD1	D2	D3	ØD4	H1	H2	L1	L2	T1	T2	Weight kg
52	10	100	45	M10	M16	98	98	134	135.5	67.5	15	26	10
62	10	120	55	M10	M20	118	118	154	165.5	82.5	15	32	15
82	15	150	72	M12	M24	145	148	184	195.5	97.5	20	36	34
102	15	180	90	M12	M30	175	178	214	245.5	122.5	20	40	62

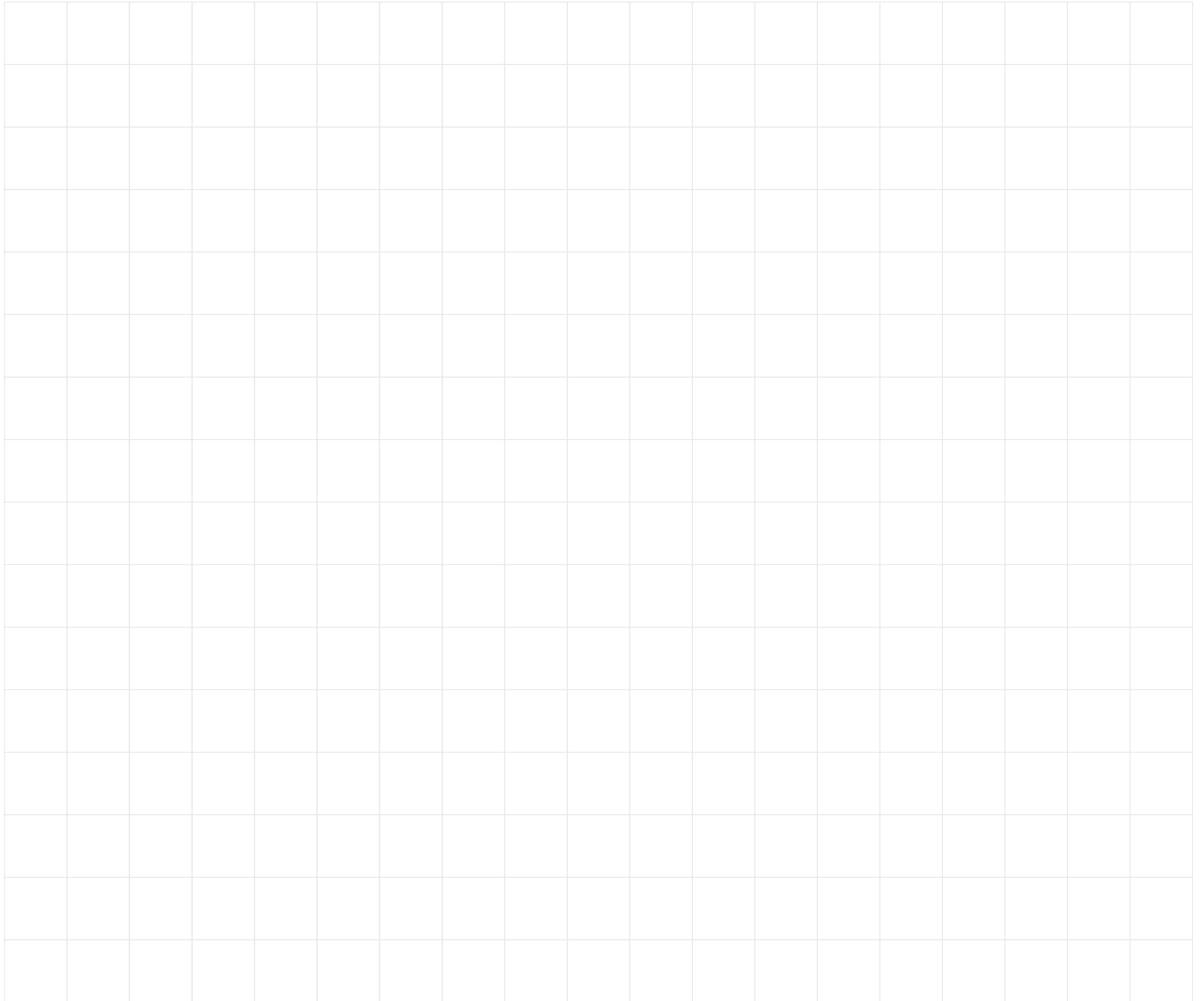
Unit Dimensions : flange connection sizes 125 to 150

(Dimensions in mm)



1. Free flow in direction of arrow
2. Name plate
3. Eyebolt for transport
 - For suitable connection flanges see Lc455

Size	ØD1	ØD2	D3	ØD4	H1	L1	T1	Weight kg
125	122	300	M30	245	353	350.5	50	190
150	150	360	M36	290	431	501	60	370



The specified data is for product description purposes only and may not be deemed to be guaranteed unless expressly confirmed in the contract.

**THM****THM Huade Hydraulics (P) Ltd**

F-127, Focal Point, Phase VIII

Ludhaiana-141010, India

Phone: 0091+161+2672777, Fax: 0091+161+2672778

www.thmhuade.cominfo@thmhuade.com, sales@thmhuade.com