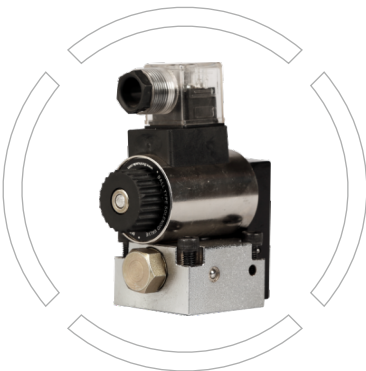


23QDF

Ball type Solenoid valve
Sizes: 6, 10
Maximum pressure upto 315 bar

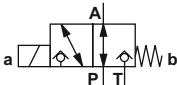
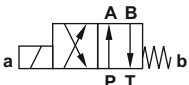
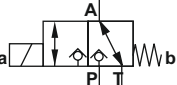
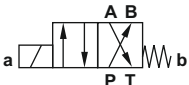


Index	Page No
• Introduction	01
• Symbol	01
• Ordering code	02
• Technical data	02
• Installation and connecting dimensions for NG6	03
• Installation and connecting dimensions for NG10	05

Introduction

- The ball type electromagnetic valve is used to realize leak-free pilot control for two-way plug-in valve hydraulic system.
- Under the desired pressure drop and flow features, it may also be used as control components for other executive device.
- The valve core adopts high quality precision steel ball without axial length.
- During the selection, the valve is free from axial block resulting from hydraulic pressure. Therefore, it may work reliably and fast.
- Thanks to the structure features and corrosive quality materials, it is applied in mineral oil, emulsion liquid, high water-base hydraulic medium after special process treatment.

Symbol

2 position 3 way		3 position 4 way	
Function code	Function label	Function code	Function label
K(EP) constant open		K	
B(EY) constant close		B	



Ordering code

			QDF				315		N9	Z5L
Operating method Electromagnetic ball valve = No code Switch manual operation = S Fbanti- explosion type = Fb										
Working position 2 way position = 2										
Working oil port 3 way port = 3 4 way port = 4										
Electromagnetic ball valve fixed type										
Nominal Diameter 6 way = 6 10 way = 10										
Function code										
Installation board code DIN24340-A8 = No code ISO4401AB034A = 4										
Working pressure 315 bar = 315										
Rated Voltage 24VDC = E24 110VDC = E110 110VAC = W110 220VAC = W220										
With protected hand override (Standard)			= N9							
Individual connections With sealing cover, without plug = K4 Large right-angle plug with indicator = Z5L										

Technical data

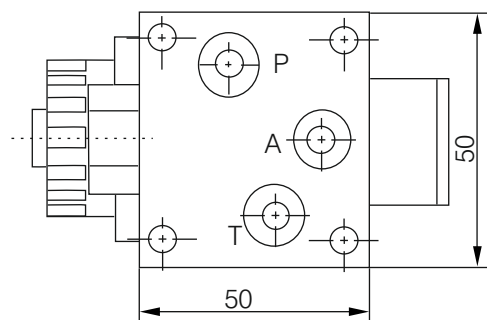
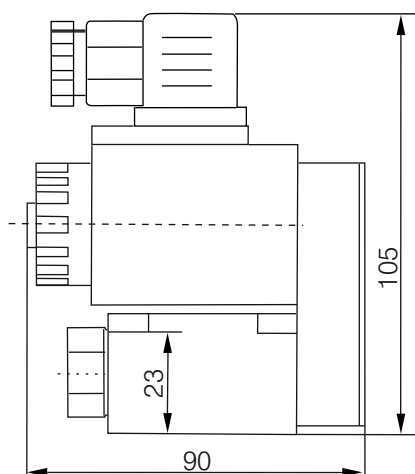
Nominal diameter	6 dia , 10 dia
Nominal pressure	315 bar
Rated current	16L/min , 36L/min
Filter precision	<25u
Working medium viscosity	10~350 cst
Working medium temperature	-15°C to -65°C
Electromagnetic rated selector frequency	120 min
Applicable medium	mineral, emulsion liquid, high water-base liquid



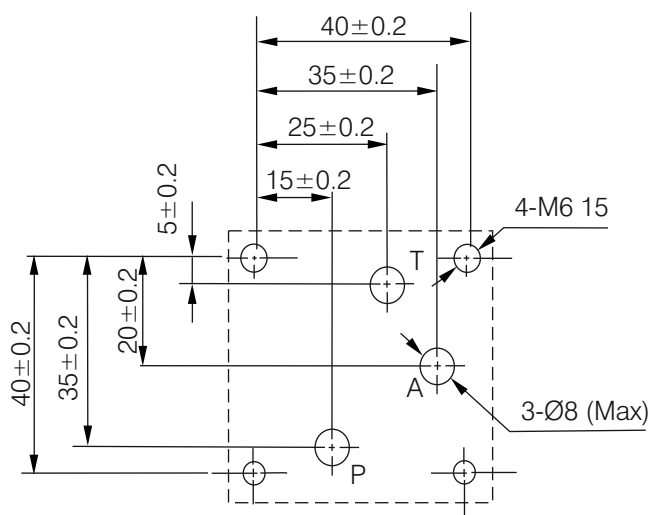
Installation and connecting dimensions for NG6

1).NG6(two-position three-way): 23QDF-6/315

a).Cosmetic dimensions

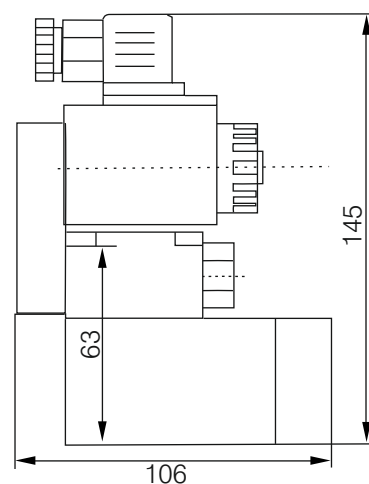


b).NG6(two-position three-way) Installation bottom board dimensions (conforming to DIN24340-A8)

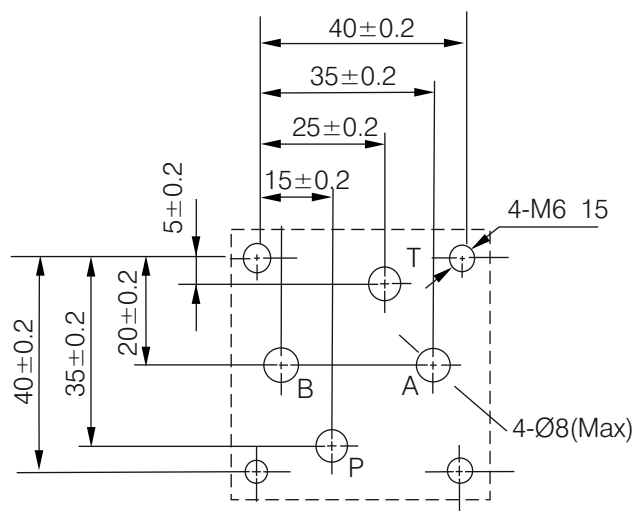
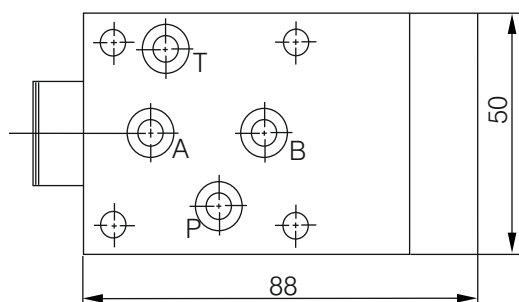


2). NG6(two-position four-way): 24QDF-6*/315

a). Cosmetic dimensions



b).NG6(two-position four-way) Installation bottom board dimensions (conforming to DIN24340-A8)

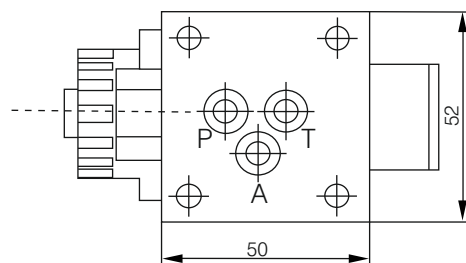
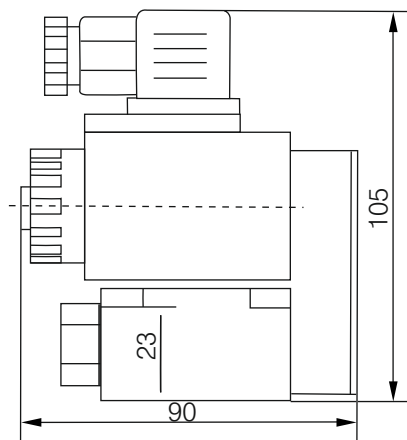




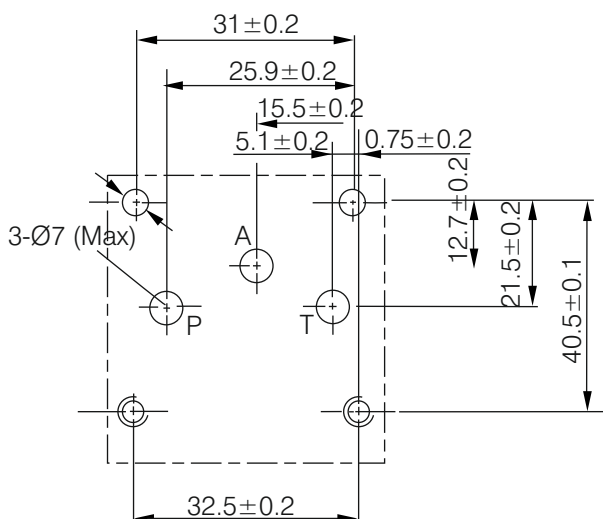
Installation and connecting dimensions for NG6

3). NG6 two-position three-way: 23QDF-6 *-4

A). Cosmetic dimensions

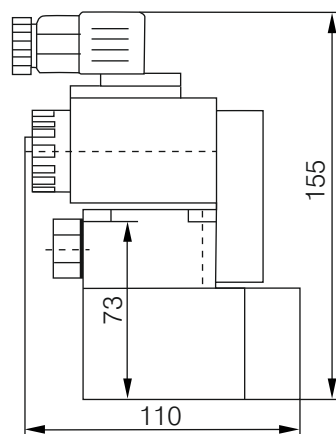


b). NG6 two-position three-way installation bottom board dimensions (conforming to ISO 4401-AB-03-4-A)

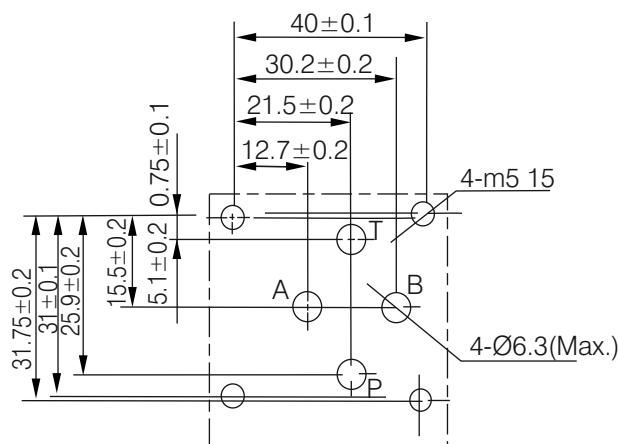
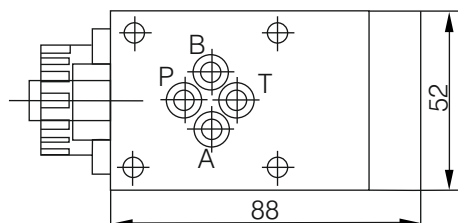


4). NG6 two-position four-way: 24QDF-6*4/315*

A). Cosmetic dimensions



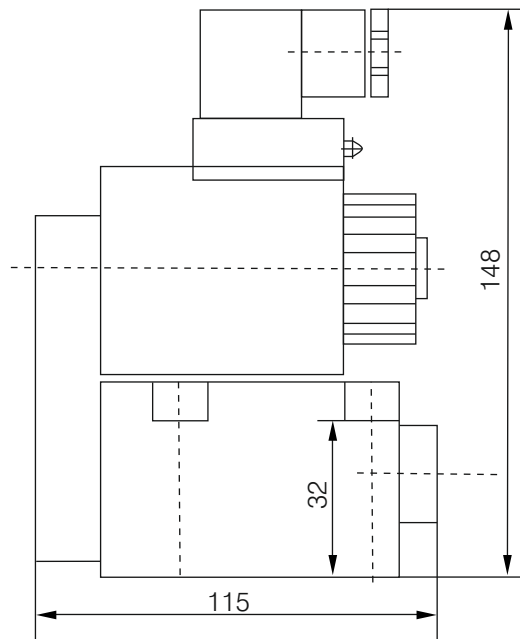
b). NG6 two-position four-way installation bottom board dimensions (conforming to ISO4401-AB-03-4-A)



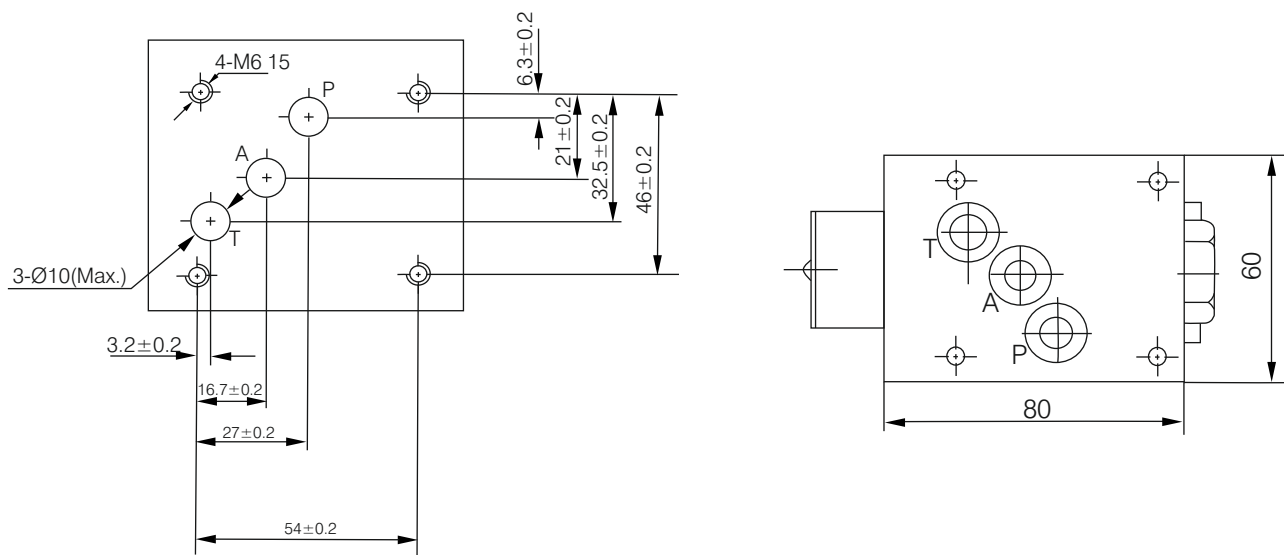


Installation and connecting dimensions for NG10

- 6).NG10 two-position three-way: 23QDF10*/315*
a). Cosmetic dimensions (Unit mm)



- b).Installations bottom board dimensions (conforming to DIN24340-A8)

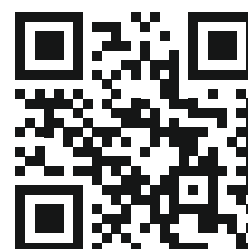


The specified data is for product description purposes only and may not be deemed to be guaranteed unless expressly confirmed in the contract.



THM Huade Hydraulics Pvt Ltd

F-127, Phase-VIII, Focal Point,
Ludhiana-141010, Punjab (INDIA)
PH: 0161-2672777, 0161-2672778
E-mail: sales@thmhuade.com
Website: www.thmhuade.com



Follow us:

