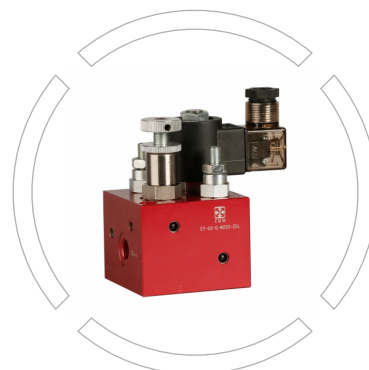


ET-02,04

Hydraulic lift valve
Max. pressure 250 bar



Index

Page No

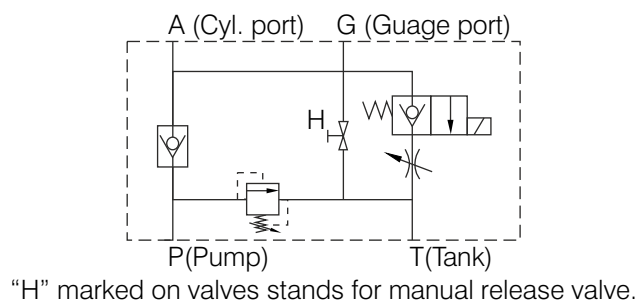
• Introduction	02
• Symbol	02
• Ordering code	03
• Technical data	03
• Installation Dimensions ET-02	04
• Installation Dimensions ET-04	04



Introduction

- Hydraulic lift valve type ET-02/04 is a compact hydraulic solution to control single acting hydraulic cylinders.
 - The whole lift up/down process can be done stably and the rate of the retracting/lowering will not be influenced by the load.
 - Used in hydraulic lift platform with different solenoid valve voltage like AC220V, AC110V, or DC24V are available. ET-02/04 consist of compact hydraulic cartridge valves machined in aluminium block.
- How hydraulic lift valve system work:**
 - Lift Up:**
The cylinder will be extended when the electric motor is switched on, then hydraulic check valve and hydraulic solenoid valve holds the system pressure, so, the hydraulic cylinder will stay in the extended position/condition.
 - Lower Down:**
The electric hydraulic pump motor stay in switched off condition. For lowering the load solenoid valve is energized to release the hydraulic oil back to the tank from hydraulic cylinder. The lowering speed can be controlled by the flow control valve in the ET02/04 valve block.
 - Emergency Operating (Options):**
In case of electrical power or hydraulic pump failure. The load can be released by the lowering valve with an emergency button/needle valve which can be operated manually.
 - Typical applications:**
Hydraulic Lift tables, Scissor lift, Hydraulic goods etc

Symbol





Ordering code

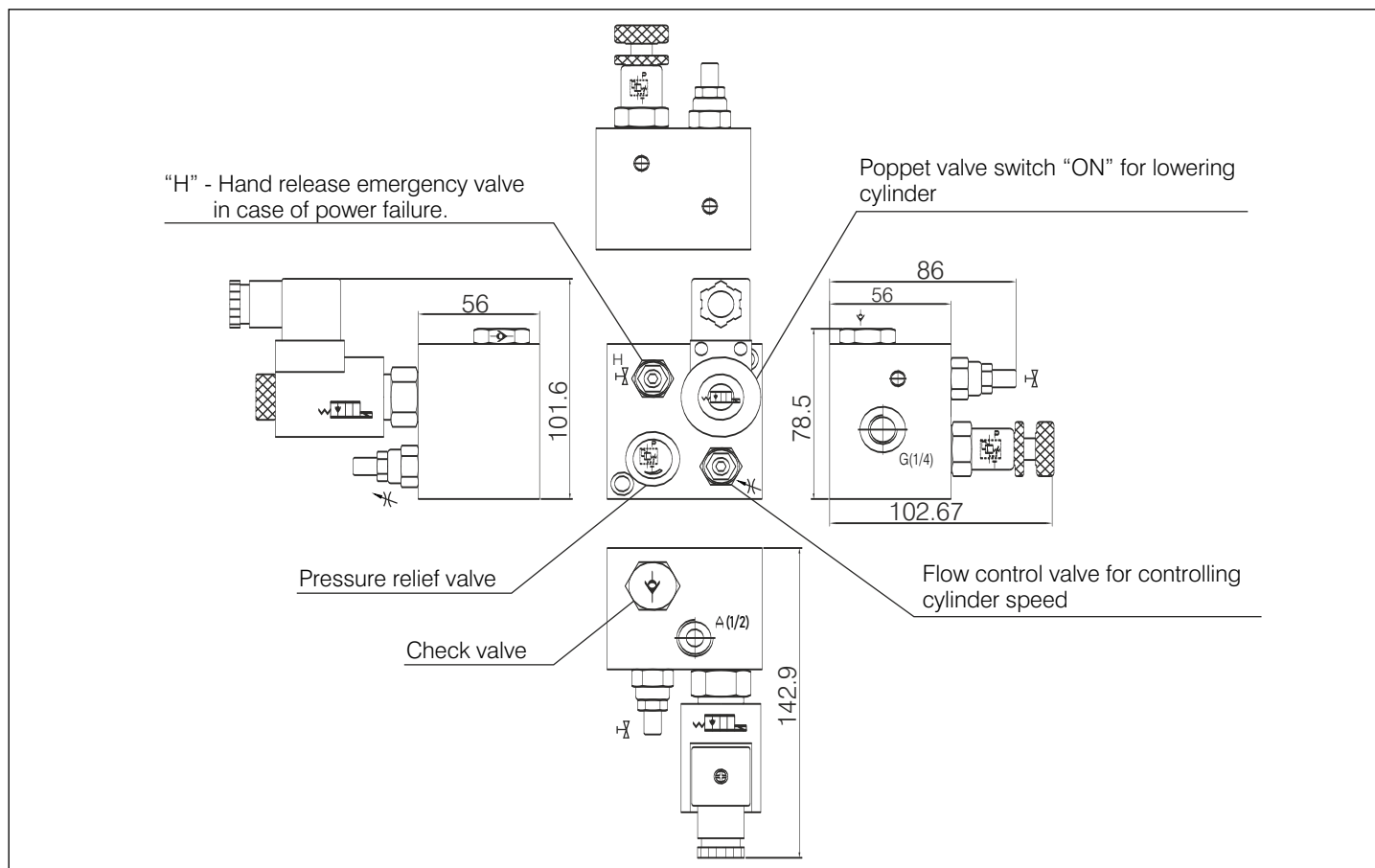
	ET	02	G	G24	Z5L
Product type Threaded type lift valve					
Size 2 4		= 02 = 04			
Port size for cylinder BSP 1/2" BSPT 1/2" NPT 1/2" P and T port remains 3/8" Guage port is 1/4"			= G = ZG = Z		
Input voltage DC12 DC24 AC110 AC220				= G12 = G24 = W110 = W220	
Connector type Double lead Plug-in connector with light					= DL = Z5L

Technical data

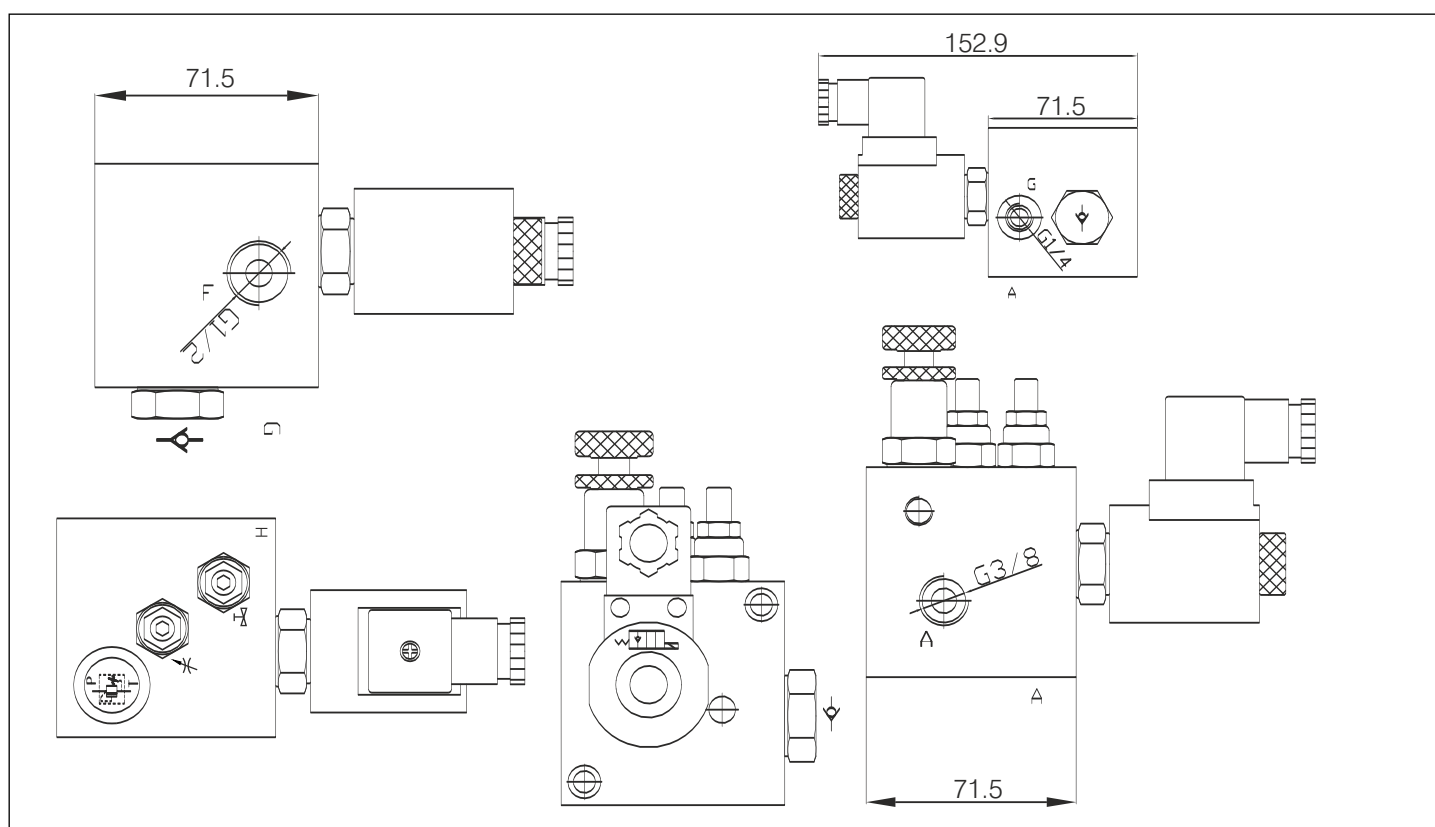
Model	ET-02	ET-04
Max. flow rate (l/min)	20	40
Max. working pressure (bar)	250	250
Material	Aluminium 6061-T6	Aluminium 6061-T6
Weight (Kgs)	1.2~1.3	2.6~2.7
Min. working voltage	90% of rated voltage	90% of rated voltage
Hydraulic fluid	Mineral oil	Mineral oil
Seal material	NBR seals	NBR seals
Temperature range (°C)	-30 to +80	-30 to +80
Viscosity range (mm²/s)	2.8 to 500	2.8 to 500
Oil cleanliness class according to ISO4406	Class 20/18/15	Class 20/18/15



Installation Dimensions ET-02

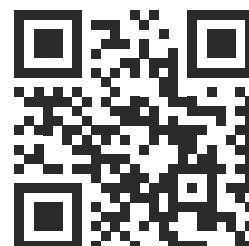


Installation Dimensions ET-04





F-127, Phase-VIII, Focal Point,
Ludhiana-141010, Punjab (INDIA)
PH: 0161-2672777, 0161-2672778
E-mail: sales@thmhuade.com
Website: www.thmhuade.com



Follow us:

