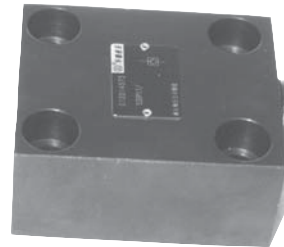


BEIJING HUADE HYDRAULIC INDUSTRIAL GROUP CO.,LTD.	check valve Type Rvp			RE 20400/12.2004
	Size 6 to 40	up to 31.5 MPa	up to 600L/min	Replaces: RE 20400/05.2001

Features:

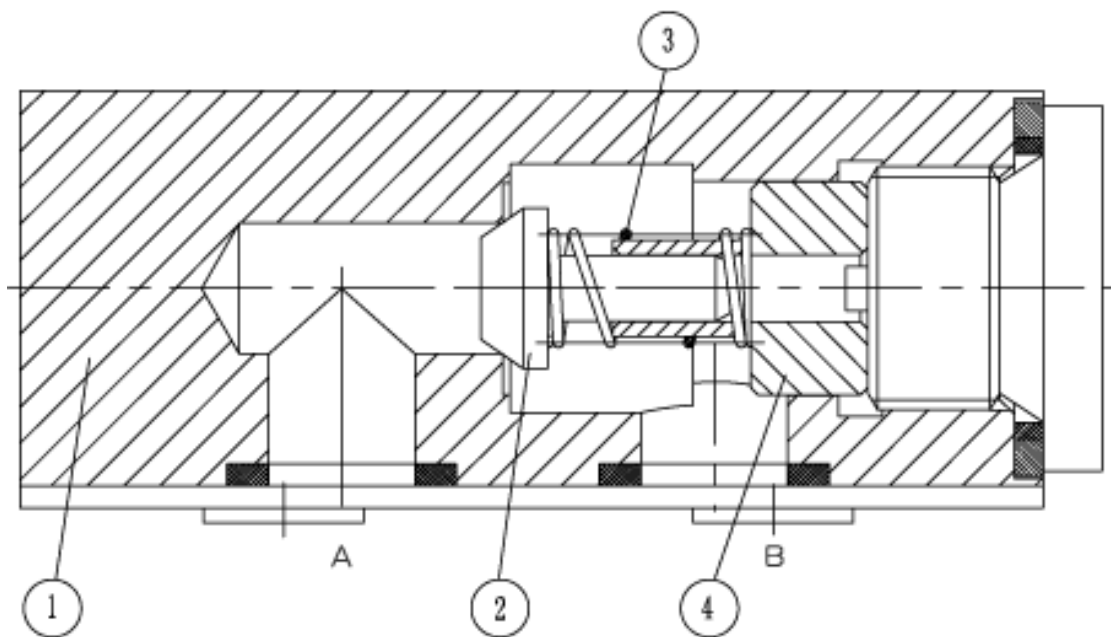
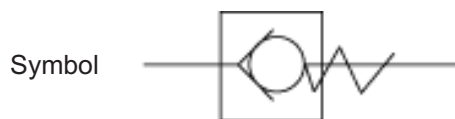
- Subplate connection
- Leakage-free closure in one direction



Description,section,symbol

The check valve type RVP has the task of, preferably closing a flow leakfree in one direction and to permit free flow in the opposite direction.It basically comprises of the housing (1), poppet (2) compression spring (3),and spring seat(4).

The stroke of the poppet (2), which is guided on its outside diameter, is limited by a mechanical stop. The built-in compression spring (3) supports the closing movement. Furthermore the compression spring (3) holds the poppet (2) in the closed position even when there is no flow through the valve.



1. Housing 2.Poppet 3. Spring 4. Spring seat

Ordering details

RV P 10 B / *

Check valve

Subplate mounting =P

Futher details in clear text

Size

6	=6
8	=8
10	=10
12	=12
16	=16
20	=20
25	=25
30	=30
40	=40

No code = Mineral oils
V = Phosphate ester

B = The technology of Beijing Huade Hydraulic

10= series 10 to 19
(10 to 19: unchanged installation and connection dimensions)

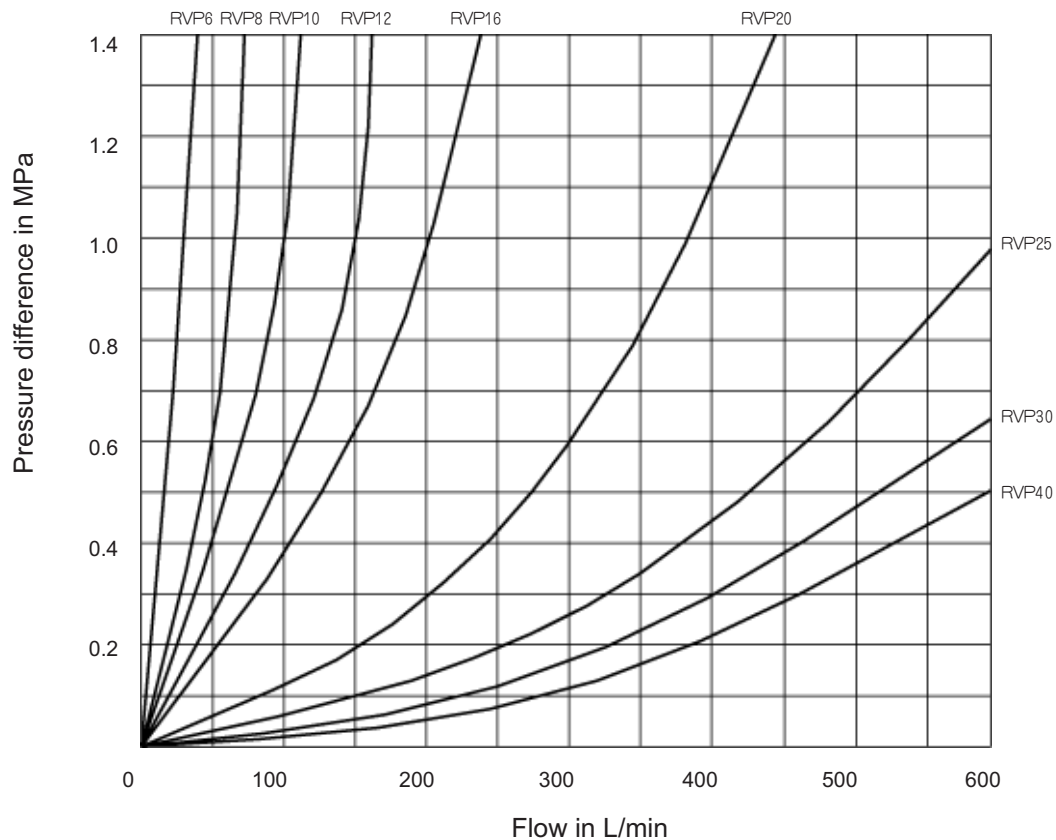
Technical data

Size		6	8	10	12	16	20	25	30	40	
Operating pressure, max. (MPa)		31.5									
Opening pressure (MPa)		0.05									
Pressure fluid		mineral oils or phosphate ester									
Pressure fluid temperature range (°C)		- 30 to + 80									
Viscosity range (mm ² /s)		2.8 to 500									
Fixing position		optional									

Characteristic curves (measured at $\nu = 41\text{mm}^2/\text{s}$ and temperature $t=50^\circ\text{C}$)

Direction of flow: P1 to P2

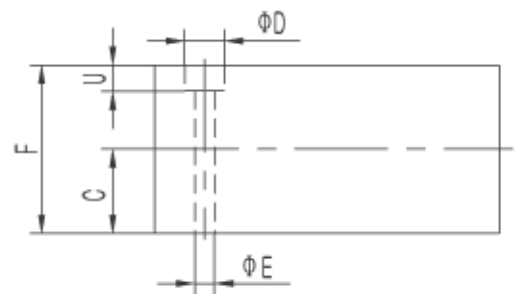
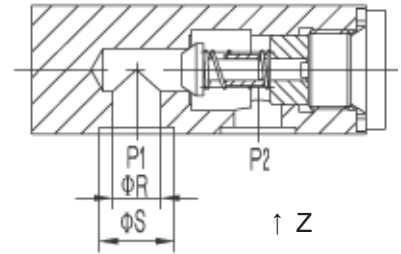
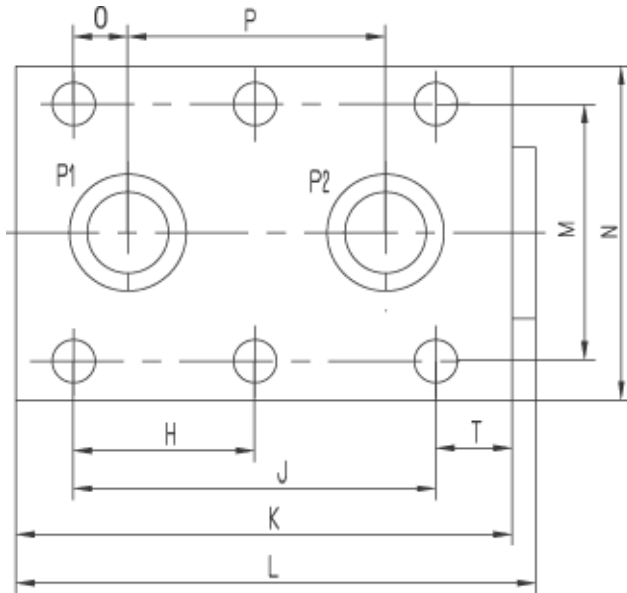
The relationship between pressure differential Δp and flow Q



Unit dimensions

(Dimensions in mm)

Z 向



Size	C	φD	φE	F	H	J	K	L	
RVP-6	11.5	11	6.6	23	-	19	41.5	46	
RVP-8	13	11	6.6	24	-	35	63.5	67	
RVP-10	13.5	11	6.6	27	-	33.5	70	74	
RVP-12	16	11	6.6	32	-	38	80	84	
RVP-16	22.5	14	9	45	38	76	104	109	
RVP-20	26	14	9	50	47.5	95	127	132	
RVP-25	29	18	11	58	60	120	165	170	
RVP-30	37.5	20	14	75	71.5	143	186	192	
RVP-40	50	20	14	100	67	133.5	192	198	
Size	M	N	O	P	Φ R	Φ S	T	U	Weight(Kg)
RVP-6	28.5	41.5	1.6	16	6	12.2	16.1	8	0.26
RVP-8	33.5	46	4.5	25.5	8	13.7	14.3	10	0.50
RVP-10	38	51	4	25.5	10	15.7	18.5	7	0.80
RVP-12	44.5	57.5	4	30	13	21.8	21	7	1.10
RVP-16	54	70	11.4	54	17	24.5	16	12	2.25
RVP-20	60	76.5	19	57	22	31.5	16	12	3.90
RVP-25	76	100	20.6	79.5	28.5	39.2	30	13	6.70
RVP-30	92	115	23.8	95	31	41	28	13	11.0
RVP-40	111	140	25.5	89	45	54	42.5	18	17.0

Notice

1. The fluid must be filtered. Minimum filter fineness is 20 μm .
2. The tank must be sealed up and an air breather/filter must be installed on air suction/entrance.
3. Subplate are not supplied, if required, please ordering separately.
4. Valve fixing bolts/screws must be high tensile (class 10.9). Please select and consult manufacturer according to the parameter listed in the datasheet.
5. Roughness of surface mating with the valve is required to $\sqrt{0.8}$.
6. Surface straightness of mating piece is required to 0.01/100mm.

All rights reserved-Subject to revision

THM Huade Hydraulics (P) Ltd

F-127, Focal Point, Phase VIII

Ludhiana-141010, India

Phone: 0091+161+2672777, Fax: 0091+161+2672778

www.thmhuade.com

info@thmhuade.com, sales@thmhuade.com