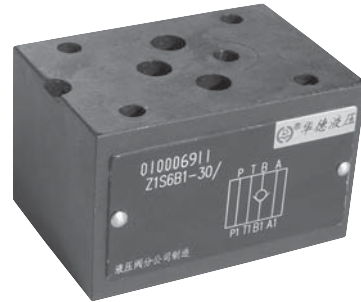


BEIJING HUADE HYDRAULIC INDUSTRIAL GROUP CO.,LTD.	<b>Check valve sandwich plate Type Z1S</b>			RE 21533/12.2004
	Size 6 to 10	up to 31.5 MPa	up to 100L/min	Replaces: RE 21533/05.2001

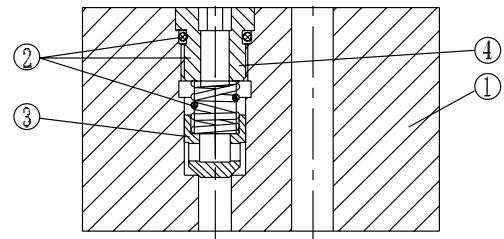
**Features:**

- Sandwich plate valve  
for use in vertical stacking assemblies
- 8 different isolating functions

The Z1S 6 valve is a direct operated check valve in sandwich plate design. It is used for the leak-free closure in one direction and allows free-flow in the counter direction. This valve type has a metallic seal between poppet (3) and housing (1). Valves of this type are especially suitable for applications with operating pressures above 10.0 MPa and flow velocities over 4 m/s.



- Porting pattern to Din 24 340 form A, ISO 4401 and CETOP-RP 121H



**Ordering details**

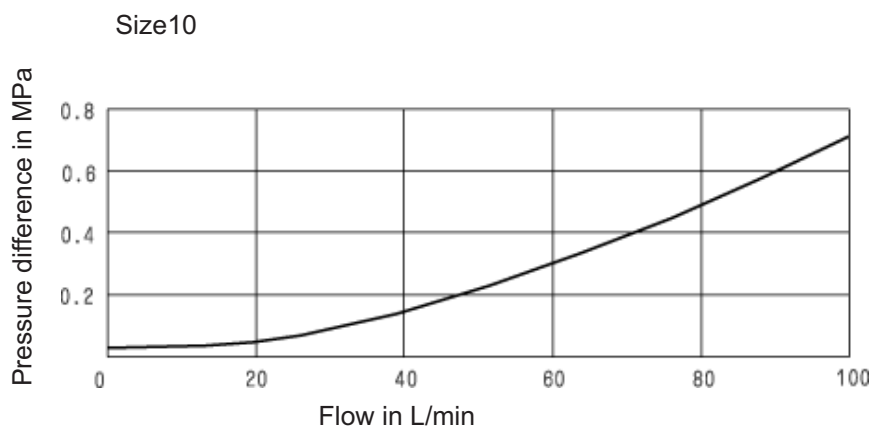
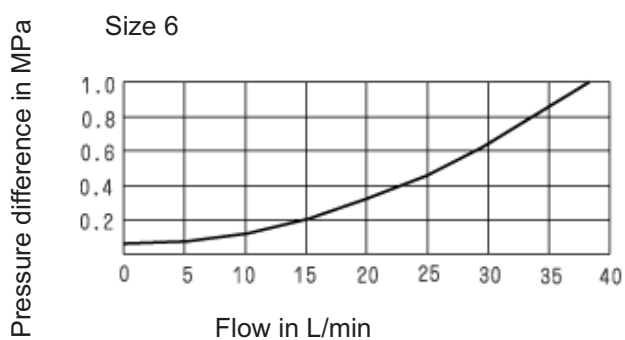
Z1S				30	B	*
Size 6 = 6	Size 10 = 10	Further details in clear text				
		No code = Mineral oils				
		V = Phosphate ester				
		B = The technology of Beijing Huade Hydraulic				
		30 = Series 30 to 39 (30 to 39: unchanged installation and connection dimensions)				
		1= Cracking pressure 0.05 MPa				
		2= Cracking pressure 0.3 MPa				
		3= Cracking pressure 0.5 MPa				

## Technical data

Size		6	10
Max. flow (L/min)		40	100
Max. operating pressure (MPa)		31.5	
Cracking pressure		See the ordering details	
Pressure fluid		Mineral oils(for NBR seal) or phosphate ester(for FPM seal)	
Pressure fluid temperature range (°C)		- 20 to + 80	
Viscosity range (mm <sup>2</sup> /s)		2.8 to 500	
Weight (kg)		0.8	2.3

\* For application outside these parameter, please consult us!

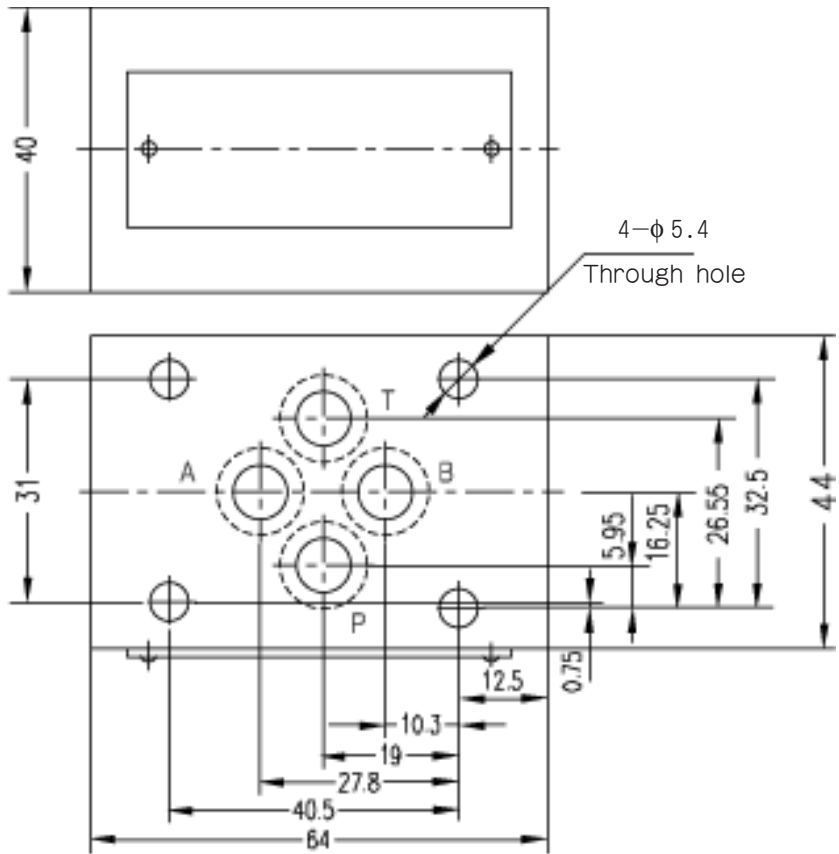
## Characteristic curves ( measured at $\nu = 41 \text{ mm}^2/\text{s}$ and $t = 50 \text{ }^\circ\text{C}$ )



**Unit dimensions**

**(Dimensions in mm)**

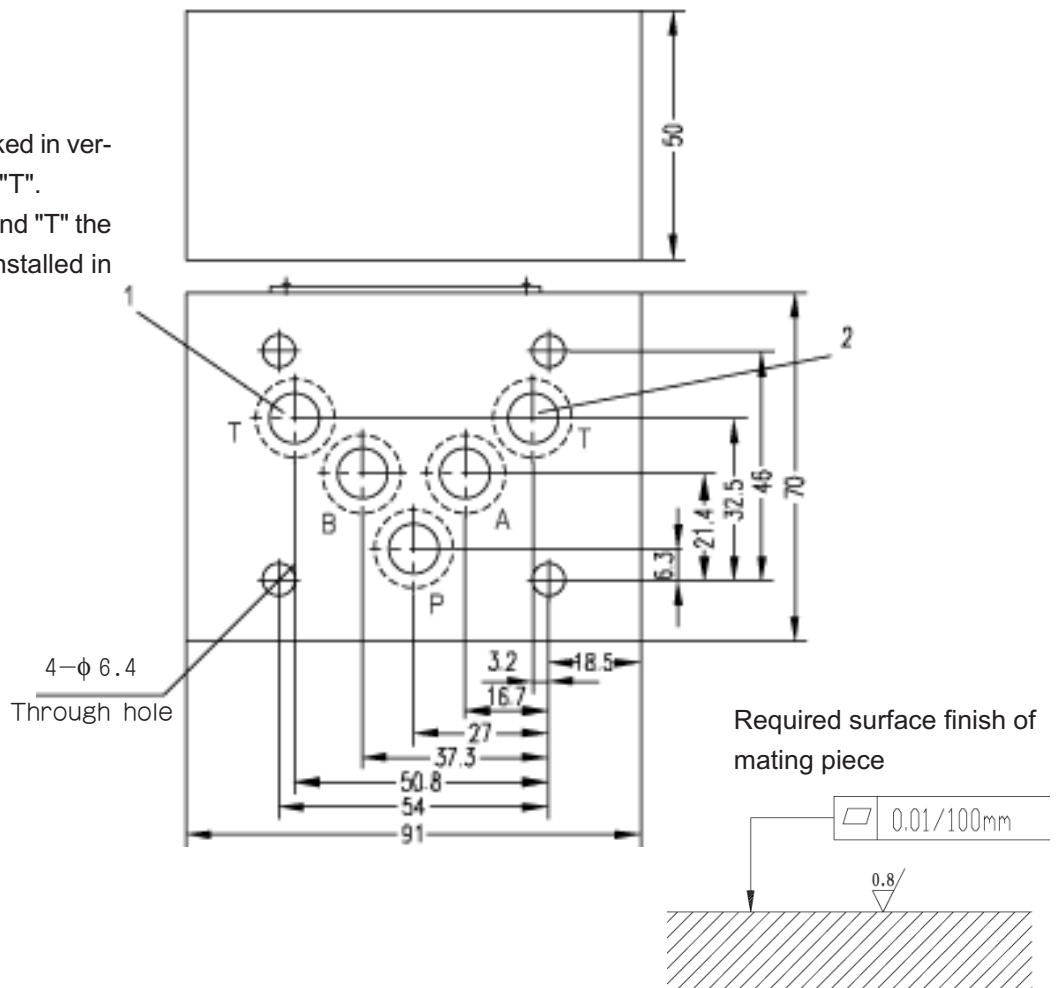
Size 6  
O-ring 4-9.25X1.78



Size 10

O-ring 5-12X2

- 1 This port is blocked in versions "F" and "T".
- 2 In versions "F" and "T" the check valve is installed in this channel.



## Notice

1. The fluid must be filtered. Minimum filter fineness is 20  $\mu\text{m}$ .
2. The tank must be sealed up and an air breather/filter must be installed on air suction/entrance.
3. Subplate are not supplied, if required, please ordering separately.
4. Valve fixing bolts/screws must be high tensile (class 10.9). Please select and consult manufacturer according to the parameter listed in the datasheet.
5. Roughness of surface mating with the valve is required to  $\sqrt{0.8}$  .
6. Surface straightness of mating piece is required to 0.01/100mm.

All rights reserved-Subject to revision

### **THM Huade Hydraulics (P) Ltd**

F-127, Focal Point, Phase VIII

Ludhiana-141010, India

Phone: 0091+161+2672777, Fax: 0091+161+2672778

[www.thmhuade.com](http://www.thmhuade.com)

[info@thmhuade.com](mailto:info@thmhuade.com), [sales@thmhuade.com](mailto:sales@thmhuade.com)