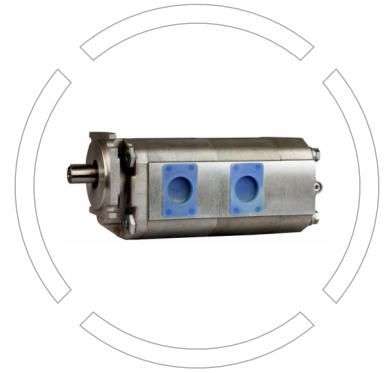


CBKP

Triple Gear Pump
Size: 72cc to 200cc
Max Pressure: 250 Bar



Index

Page No

• Features	02
• Ordering code	02
• Technical Data	03
• Unit Dimensions	03



Features

- The housing made of liquid extrusion processing has a strong bearing capacity.
- Adopting high strength alloy steel gear to maintain high reliability and long lifetime of gear pump.
- Adopting high strength roller bearing to improve the capacity of resisting overload and pollution.
- The connection form of input shaft includes flat key, rectangle spline, SAE spline and metric system involute spline.
- The automatic compensation mechanism of axial clearance enables gear pump to maintain a long-timehigh efficiency work.
- There is a screw hole in the tail of gear pump to provide auxilliary support.
- It is widely applied in the industry of engineering machinery.

Ordering code

CBKP	*	/	*	/	*	-	B	F	*	*
------	---	---	---	---	---	---	---	---	---	---

CBKP

First Pump Nominal Displacement (mLr)
50, 63, 80, 100

Second Pump Nominal Displacement (mLr)
32, 40, 50, 63, 80, 100

Third Pump Nominal Displacement (mLr)
32, 40, 50, 63, 80, 100

Mounting
Square

= B

Jointing Port
Flange

= F

Shaft End
Plain key
SAE Spline
Rectangular Spline
Involute Spline

= P
= Ø
= H
= X

Rotation
Left (counter clockwise)
Right (clockwise is omitted)

= L
= R



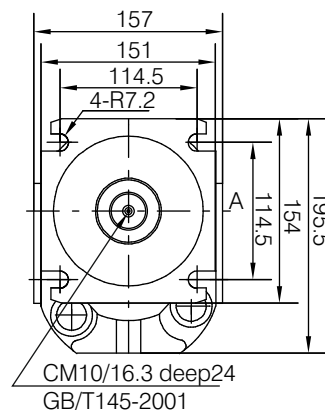
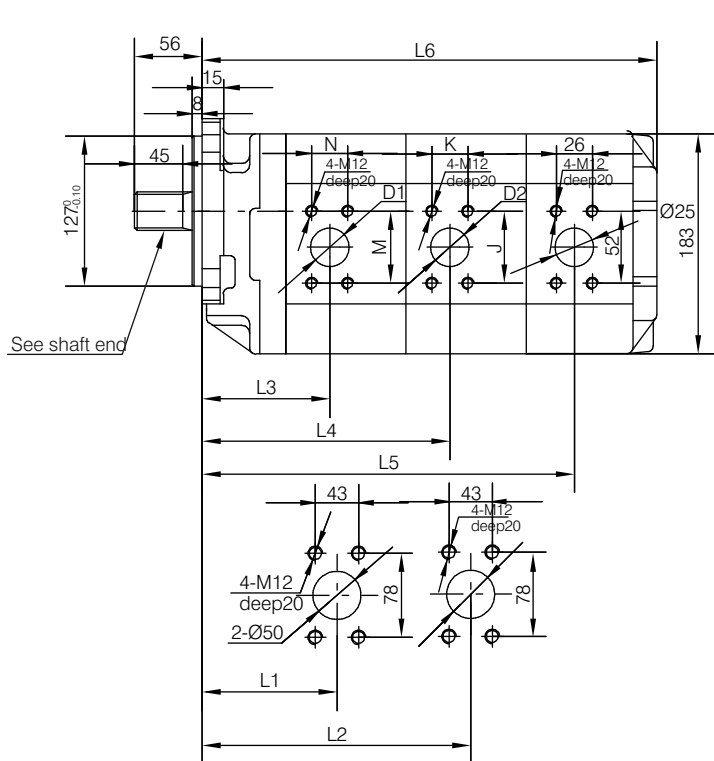
Technical data

Model	Nominal Displacement (mL/r)	Pressure (Bar)		Speed (r/min)			Volumetric efficiency (>%)
		Rated	Max	Min	Rated	Max	
CBKP50/50/40-BF**	50/50/40	200	250	500	2000	2500	90
CBKP63/40/32-BF**	63/40/32						
CBKP63/50/32-BF**	63/50/32						
CBKP63/63/32-BF**	63/63/32						
CBKP63/63/40-BF**	63/63/40						
CBKP80/50/32-BF**	80/50/32						
CBKP80/50/50-BF**	80/50/50						
CBKP80/63/32-BF**	80/63/32						
CBKP80/63/40-BF**	80/63/40						
CBKP80/80/32-BF**	80/80/32						
CBKP80/80/40-BF**	80/80/40						
CBKP100/63/40-BF**	100/63/40						
CBKP100/63/50-BF**	100/63/50						
CBKP100/80/32-BF**	100/80/32						
CBKP100/80/40-BF**	100/80/40						
CBKP100/80/63-BF**	100/80/63						

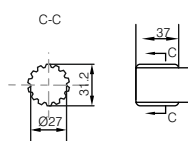


Unit Dimensions

(Dimensions in mm)

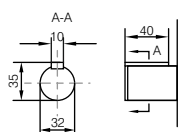


SAE Spline

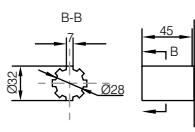


SAE Spline data	
D.P	12/24
No. of tooth	14
Pressure angle	30°

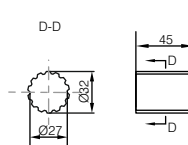
Plain Key



Rectangle Spline



Involute Spline



Involute Spline data	
Modular	2
No. of tooth	15
Pressure angle	30°

TYPE	L1	L2	L3	L4	L5	Outlet				L4	(Kg)
						D1	M x N	D2	J x K		
CBKP50/50/40-BF**	119	239.5	100	220.5	345	Ø25	52 x 26	Ø25	52 x 26	404.5	32.7
CBKP63/40/32-BF**	125	241	106	224	345.5					401.5	32.3
CBKP63/50/32-BF**		245		226	350.5					406.5	33
CBKP63/63/32-BF**		251		232	356					412	34
CBKP63/63/40-BF**		254		235	359.5					415.5	34.5
CBKP80/50/32-BF**	128	254	110	235	359.5	Ø32	60 x 30	Ø32	60 x 30	415.5	34.5
CBKP80/50/50-BF**		260		241	365					424	34.9
CBKP80/63/32-BF**		263		245	374					421	35.1
CBKP80/63/40-BF**		270		251	374					424.5	35.8
CBKP80/80/32-BF**	120	263	120	245	374	Ø25	52 x 26	Ø25	52 x 26	430	37.2
CBKP80/80/40-BF**		270		251	374					433.5	37.7
CBKP100/63/40-BF**		273		255	384					434.5	37.4
CBKP100/63/50-BF**		273		255	384					439.5	38.2
CBKP100/80/32-BF**	120	273	120	255	384	Ø32	60 x 30	Ø32	60 x 30	440	38.5
CBKP100/80/40-BF**		273		255	384					443.5	39
CBKP100/80/63-BF**		273		255	384					454	41.5

