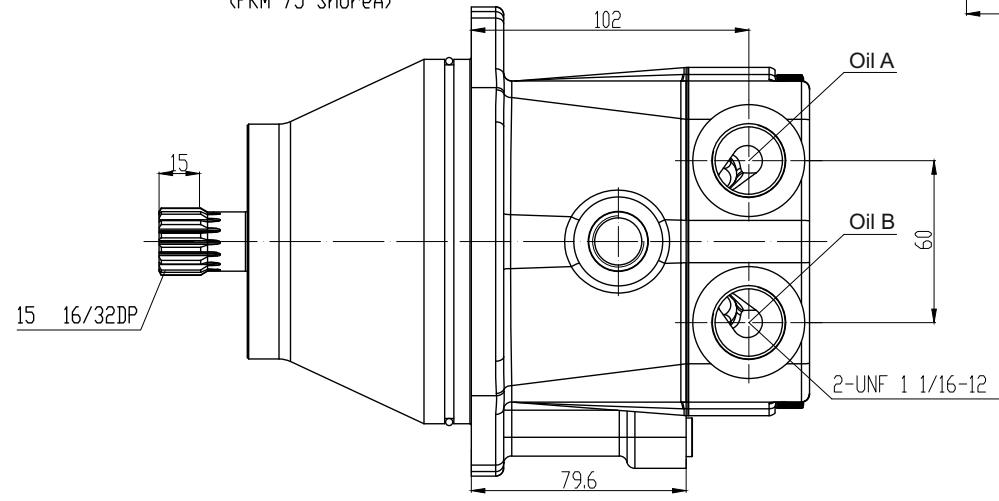
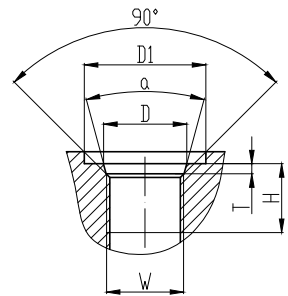
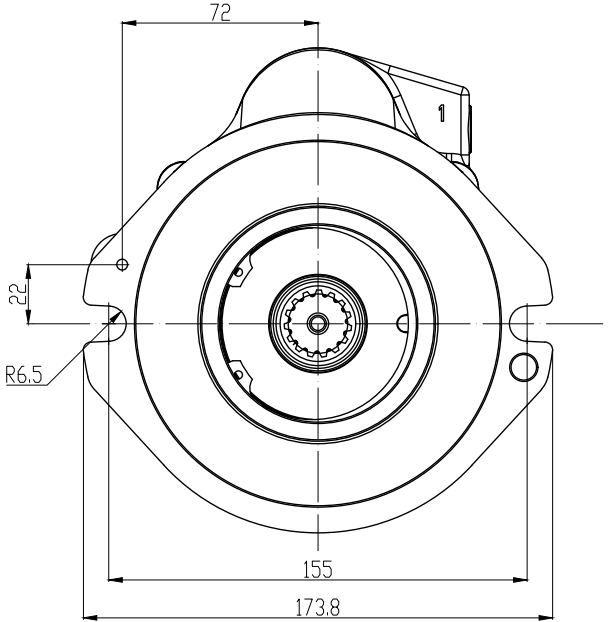
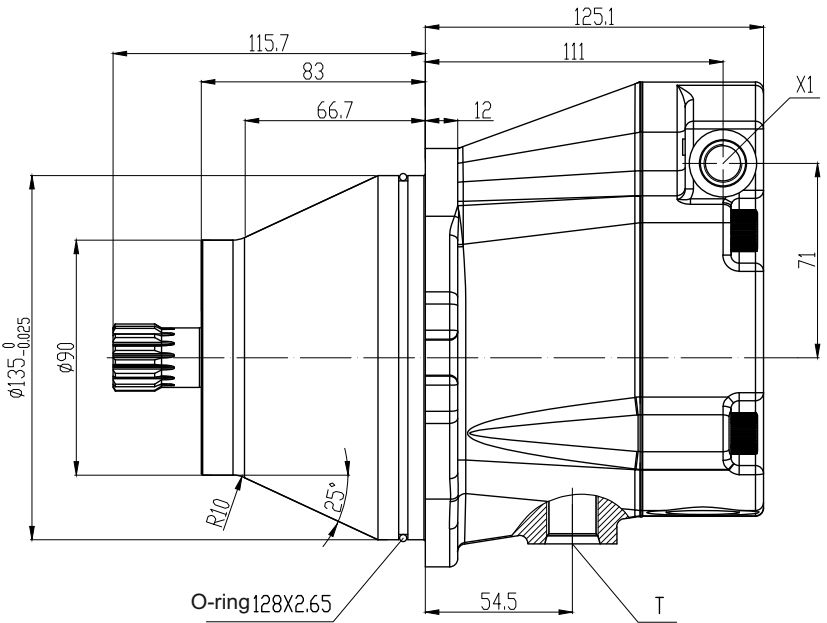
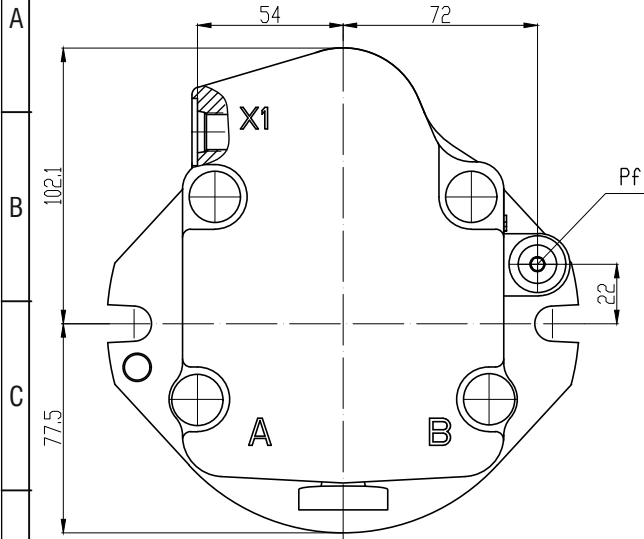
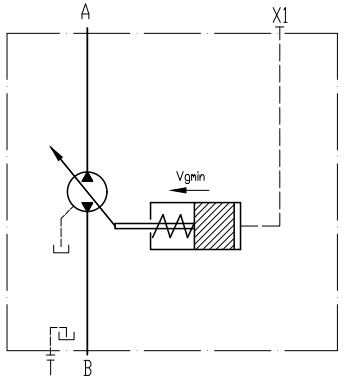


6	7	8
Rev. No	Revision note	Date
		Signature
		Checked



Technical data

Direction	Bidirectional
Max. Displacement	45 ml/r
Minimum Displacement	17.5 ml/r
Continuous pressure	175 bar
Max. pressure	350 bar
Max. Speed (Large displ)	3500 r/min
Max. Speed (Small displ.)	4650 r/min
Shell pressure	2 bar
Output torque	0.75 Nm/bar
External control port pressure	14~69 bar
Volumetric efficiency	not less than 95%
Working temperature	-25°C~+100°C



Port Details

Oil port	W	T	H	D	D1	a	Port name
A	1-1/16-12UNF-2B	3.3	20	Ø29.2	Ø41.5	30°	Oil inlet and outlet
B	1-1/16-12UNF-2B	3.3	20	Ø29.2	Ø41.5	30°	Oil inlet and outlet
X1	9/16-18UNF-2B	2.5	16	Ø15.7	Ø25	24°	Control port
T	3/4-16UNF-2B	2.5	17	Ø20.6	-	30°	Drain port
PF	7/16-20UNF-2B	2.4	15	Ø12.4	Ø21	24°	Brake release port

THM HUADE HYDRAULICS PUT LTD

Model no: TKC45DNERNFF07SNAFF18

Drng.	MS	Customer:	
Approv.	MK	Qty:	Scale:
Date	06 May, 2022	Dimensions are in mm	Sh. Of
		Drng. no.	