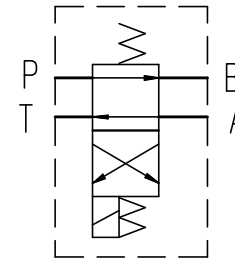
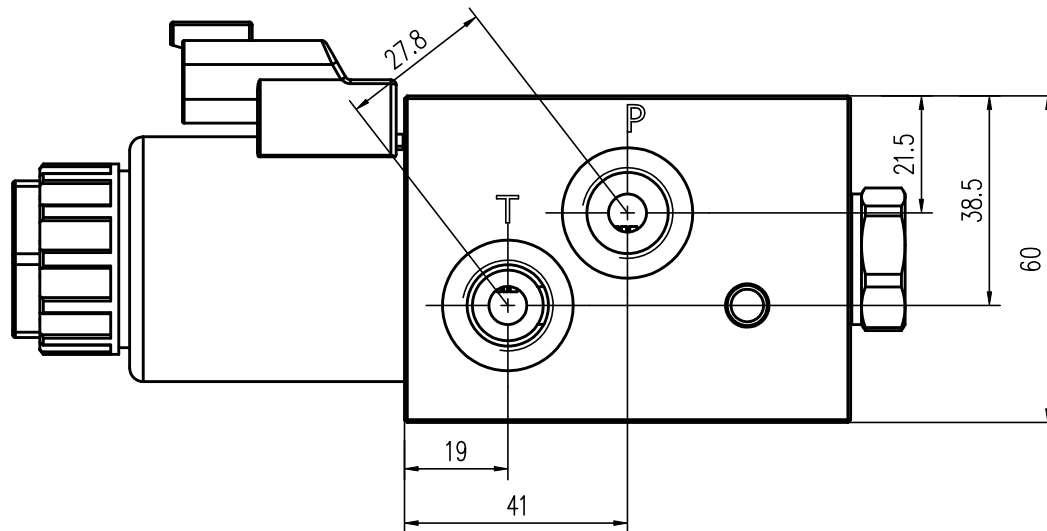
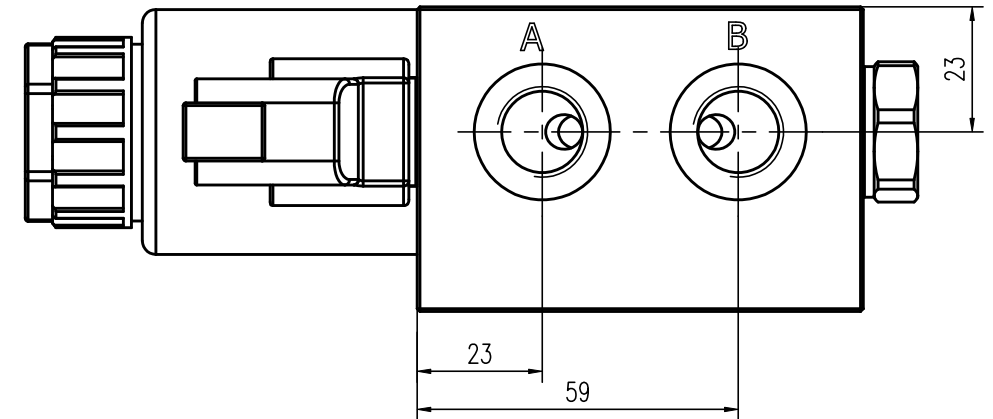
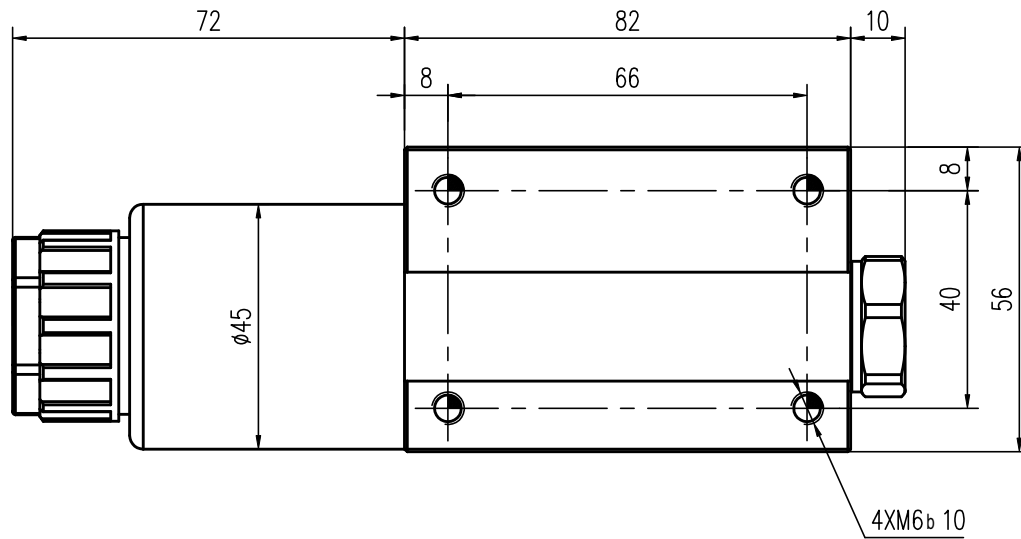


6		7		8	
Rev. No	Revision note		Date	Signature	Checked



## Technical Parameters

1. Rated flow: 60L/Min, rated pressure: 350Bar
2. Rated pressure of T port: 210Bar
3. Voltage: DC13V, interface: DT04-2P, power: 30W
4. Leakage: at 100 bar, the maximum is 30 ml/min;
5. Operating temperature range: -20°C~+90°C
6. Oil cleanliness requirements: within NAS97.

All threaded interfaces: G3/8 DIN38528.

The surface of the valve body is zinc-nickel alloy plated, thickness: 0.008-0.012mm

[illegible]

A
B
C
D
E
F
G
H

A
B
C
D
E
F
G
H