

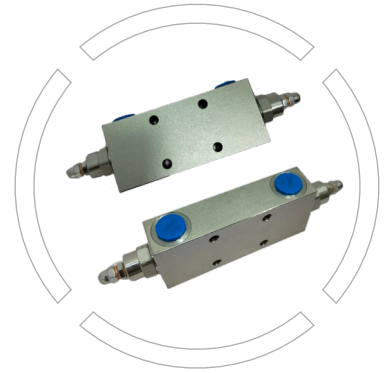
VBSO

Counterbalance Valve

Size: 6, 10, 15, 20

Flow rate: 30, 40, 60, 80 l/min

Max. pressure up to 350 bar



Index

- Ordering code
- Specifications
- Hydraulic circuit
- Unit Dimensions

Page No

02

02

02

03-05



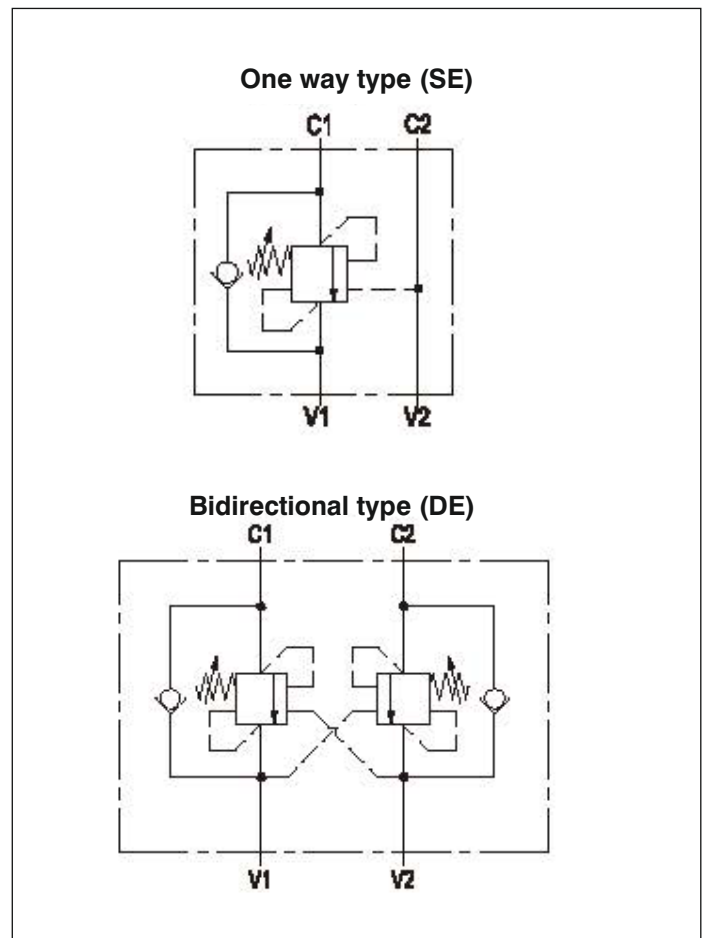
Ordering code

	VBSO				
Conterbalance valve	= VBSO				
One way Bidirectional		= SE = DE			
Size 6				= 06	
Size 10				= 10	
Size 15				= 15	
Size 20				= 20	
Type Subplate mounting				= G	
Plate type (one port) Thread mounting				= P1	
Plate type (two ports) Thread Mounting				= P2	
Modular Mounting				= M	
British Lhch size					= No code
Metric size					= 2

Specifications

Model	Working pressure	Max. Flow rate	Pilot ratio
VBSO-*-6*	350	30	4.2:1
VBSO-*-10*	350	40	4.2:1
VBSO-*-15*	320	60	4.2:1
VBSO-*-20*	320	80	4.2:1

Hydraulic Circuit

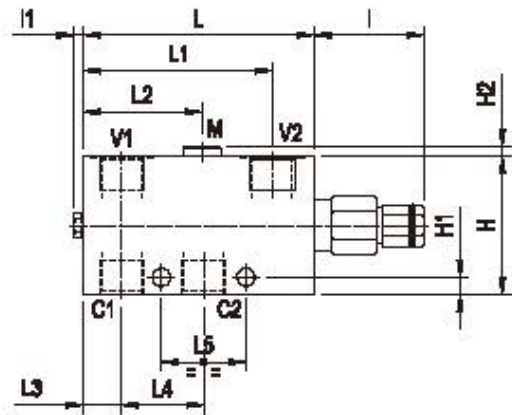
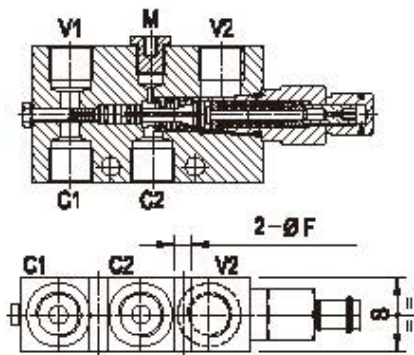




Unit Dimensions

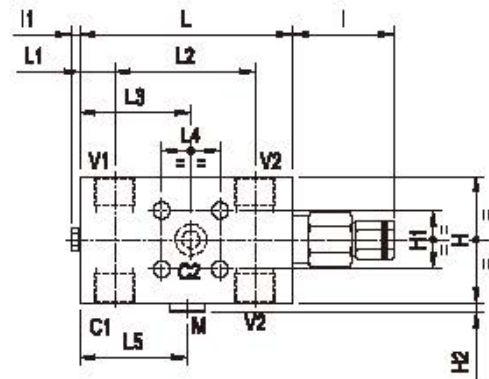
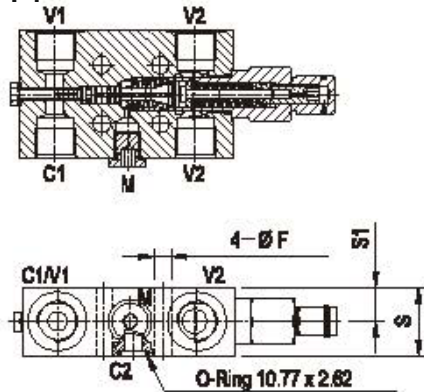
(Dimensions in mm)

VBSO-SE-*G



Model	S	L5	L4	L3	L2	L1	L	l1	l	H2	H1	H	F	Y	Weight Kg
VBSO-SE-6G	30	40	39.3	18	-	88.3	109	4.5	52.5	5	8	55	8.5	G1/4 or M14*1.5	1.33
VBSO-SE-10G	30	40	39.3	18	-	88.3	109	4.5	52.5	5	8	55	8.5	G3/8 or M18*1.5	1.33
VBSO-SE-15G	35	40	39.3	18	55.3	89.8	109	4.5	52.5	5	8	65	8.5	G1/2 or M22*1.5	1.85

VBSO-SE-*P1

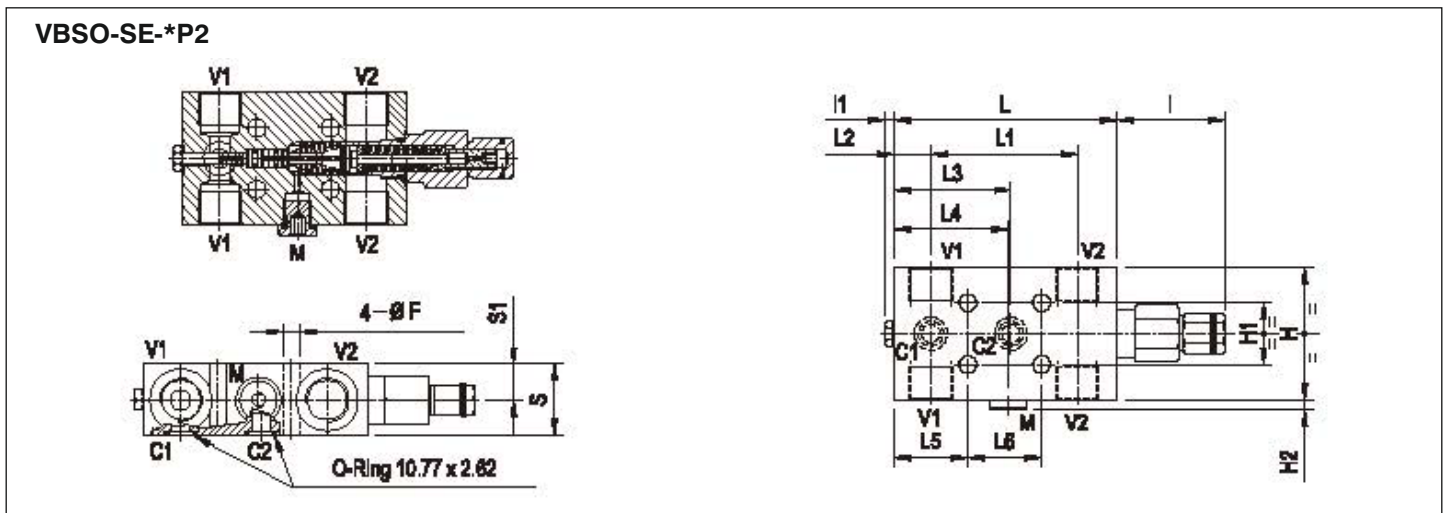


Model	S1	S	L5	L4	L3	L2	L1	L	l1	l	H2	H1	H	F	Y	Weight kg
VBSO-SE-6P1	15	30	51.7	30	51.7	70.3	20.7	109	4.5	52.5	5	30	55	8.5	G1/4 or M14*1.5	1.29
VBSO-SE-10P1	16	29.5	51.7	30	51.7	70.3	20.7	109	4.5	52.5	5	30	55	8.5	G3/8 or M18*1.5	1.29
VBSO-SE-15P1	17.5	34.5	53.7	30	52	70.3	19.2	109	4.5	52.5	5	30	65	8.5	G1/2 or M22*1.5	1.81



Unit Dimensions

(Dimensions in mm)



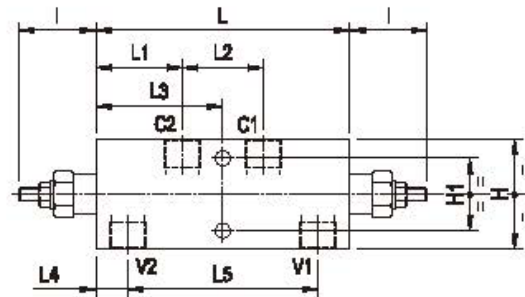
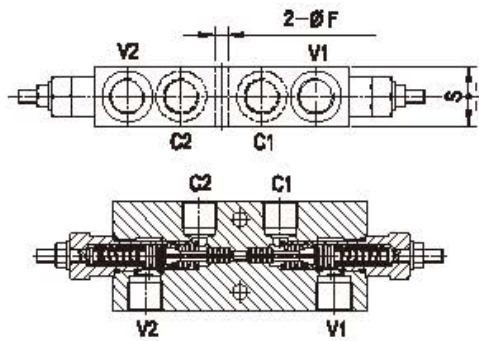
Model	S1	S	L6	L5	L4	L3	L2	L1	L	I1	I	H2	H1	H	F	Y	Weight kg
VBSO-SE-6P1	15	30	36	37	51.7	51.7	20.7	70.3	109	4.5	53	5	30	55	8.5	G1/4 or M14*1.5	1.29
VBSO-SE-10P1	15	29.5	36	37	51.7	51.7	20.7	70.3	109	4.5	52.5	5	30	55	8.5	G3/8 or M18*1.5	1.29
VBSO-SE-15P1	17.5	34.5	36	37	52	52	19.5	71.5	109	4.5	52.5	5	30	65	8.5	G1/2 or M22*1.5	1.81



Unit Dimensions

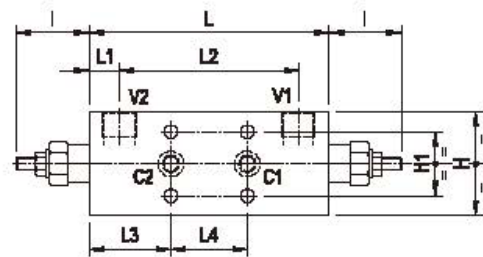
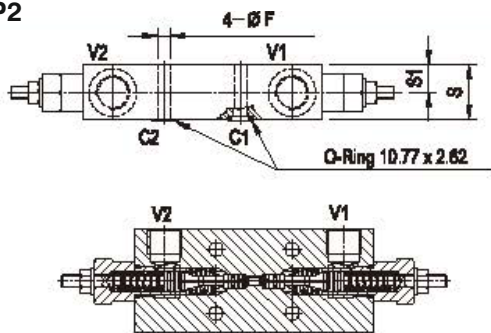
(Dimensions in mm)

VBSO-DE-*G



Model	S	L5	L4	L3	L2	L1	L	I	H1	H	F	Y	Weight Kg
VBSO-DE-6G	30	109.6	20.7	75.5	47.6	51.7	151	45.5	38	55	8.5	G1/4 or M14*1.5	2.5
VBSO-DE-10G	30	109.6	20.7	75.5	47.6	51.7	151	45.5	38	55	8.5	G3/8 or M18*1.5	2.5
VBSO-DE-15G	35	112.6	19.2	75.5	47.6	51.7	151	45.5	43	65	8.5	G1/2 or M22*1.5	2.9

VBSO-DE-*P2



Model	S1	S	L4	L3	L2	L1	L	I	H1	H	F	Y	Weight Kg
VBSO-DE-6P2	15	29.5	48	51.5	110	20.7	151	45.5	40	55	8.5	G1/4 or M14*1.5	1.76
VBSO-DE-10P2	15	29.5	48	51.5	110	20.7	151	45.5	40	55	8.5	G3/8 or M18*1.5	1.76
VBSO-DE-15P2	18	34.5	48	51.5	113	19.2	151	45.5	40	65	8.5	G1/2 or M22*1.5	2.3

VBSO-DE-6M

