

THM HUADE HYDRAULICS PVT LTD

CV-08

Direct Acting Ball Type Cartridge (Check Valve))

Operation

Pressure at ① overcomes the spring-bias ball and allows free flow to ②
Flow in the opposite direction from ② to ① is blocked by the ball.

Specifications

Max. Operating Pressure: 315 bar

Rated flow: 30L/min

Internal Leakage: ≤0.3ml/min. Max. at 250 bar

Temperature: -35°C to +120°C

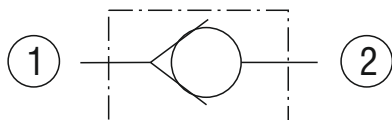
Recommended Filtration: Critical Application: ISO17/15/13

Non-Critical Application: ISO20/18/14

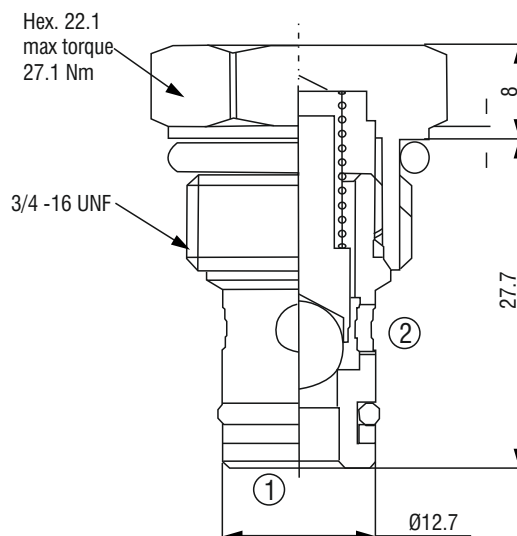
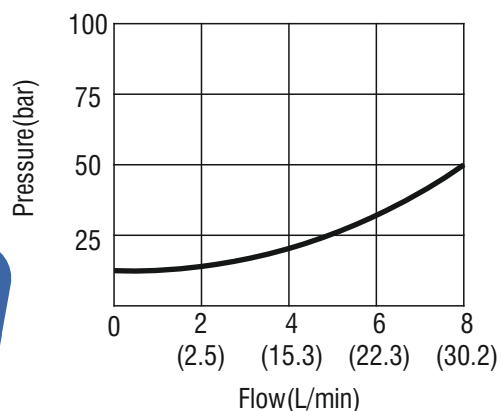
Fluids: Mineral based fluid for other fluid compatibility consult factory

Body Material: Anodized 6061T6 aluminium ally rated at 207 bar

Symbol



Flow Pressure Drop Curve



Ordering Code

CV	08	C	A	N
----	----	---	---	---

Cracking pressure (kgf/cm²)

0.5 = A

2.0 = C

6.0 = E

12.0 = F

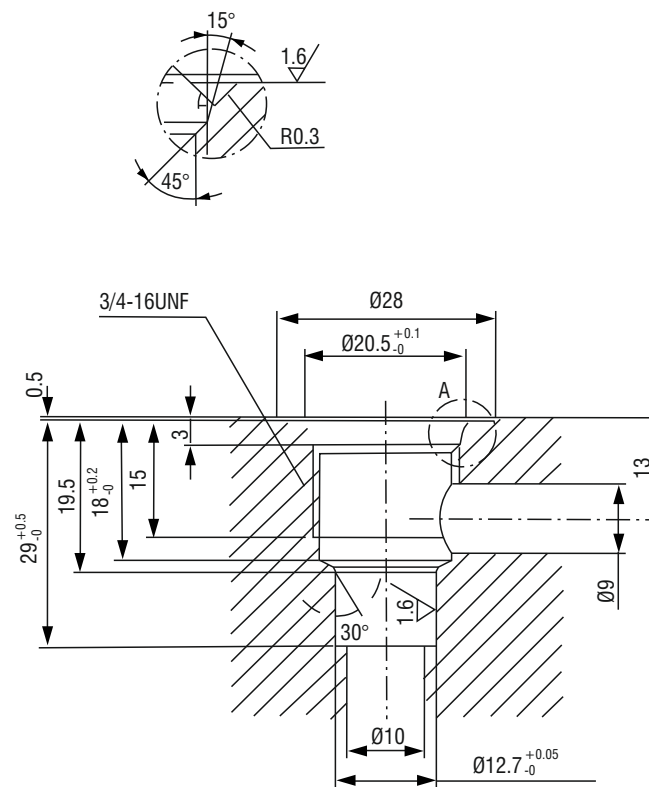
Construction

Ball type = A

Seal Material

Bunan = N

Viton = V



THM HUADE HYDRAULICS PVT LTD

Address: F-127, Phase-VIII,

Focal Point, Ludhiana-141010

Tel: 0161-2672777, 2672778

Website: www.thmhuade.com

E-mail: sales@thmhuade.com