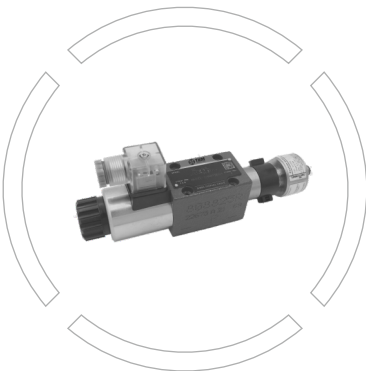


WE(26)...(QMBG24) Series

Solenoid Directional Valve with
Spool Position Monitoring
Sizes: NG6 & NG10
Maximum Working pressure up to 350 Bar



Index	Page No
• Features	01
• Function description, sectional drawing	02
• Ordering code	03
• Functional symbols	04
• Technical parameters	04
• Electrical connection	05
• Unit Dimensions	06-12

Features

- The opening, closing and direction of flow controlled by solenoid
- Position monitoring by high voltage proximity switch
- Short response time, high induction frequency, good repeatability
- Accurately detect the spool switching position
- Non-contact induction to avoid wear and increase the service life

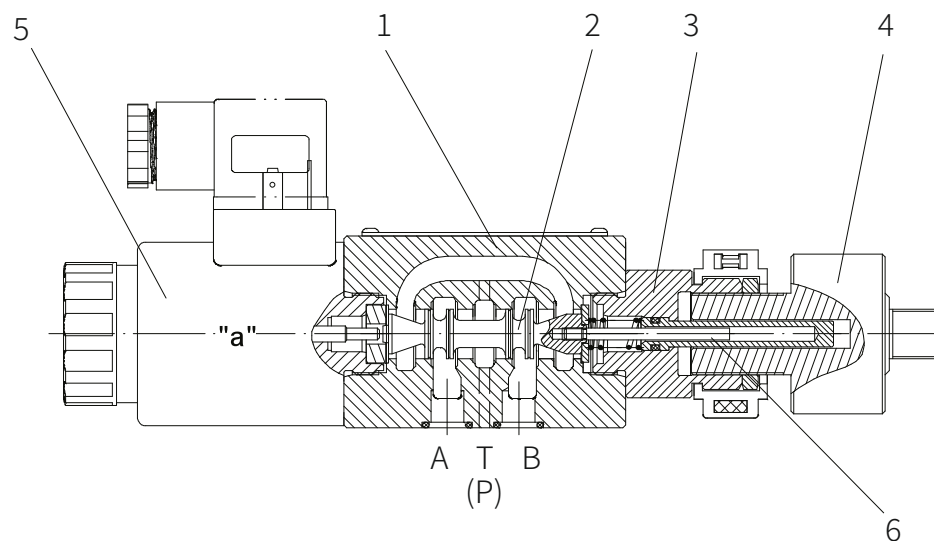


Function description, sectional drawing

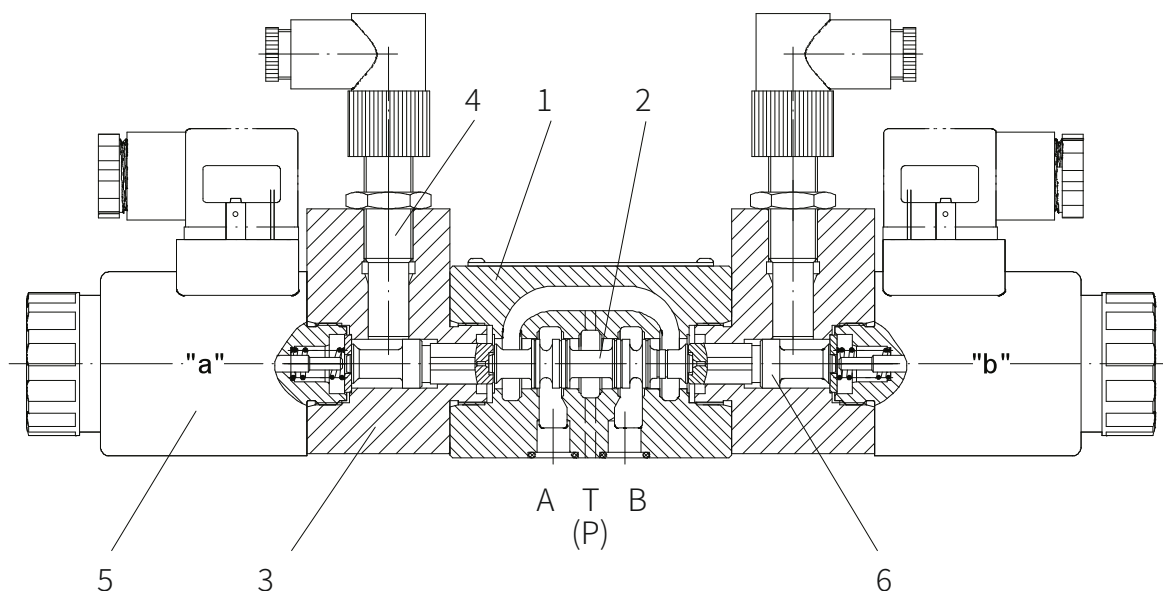
The valve is composed of valve body (1), valve spool (2), transition joint (or transition cover) (3), sensor (4), solenoid (5), and sensing rod (or transition spool) (6).

The valve spool is moved from the rest position to the required working position to realize the switching process by energizing or de-energizing solenoid. The fluid flows from P to A and B to T, or from P to B and A to T.

During the switching process, the signal is received through the proximity switch to feedback timely to the system whether the switching is in place and protect the system.



Model 4WE6D62T/CG24N9K4QMBG24



Model 4WE6E6XT/26CG24N9Z5LG24WD



Ordering Code

Model WE../..QMBG24

1)	5	4	WE		D		T	C	G24			QMBG24	
four-way valve	=4												sealing material
solenoid spool valve	=WE												No code= NBR seals
size 6													V= FKM seals
size 10													(consult for other seals)
functional symbols													QMBG24= monitored spool position "b"
size 6													Z4= standard plug
design serial number													Z5L= large right angle lamp plug
size 10													
design serial number													No code= no manual emergency operation
THM													N9= with manual emergency operation
wet-pin solenoid with detachable coil													G24= 24V DC

1) Only for size 10 with 5-chamber

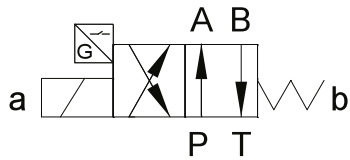
Model WE../26...

	WE					T	26	C					
3-way valve	=3												high voltage proximity switch
4-way valve	=4												G24ZO= right angle connector without cable
solenoid spool valve	=WE												G24WO= angled connector without cable
size 6													G24ZD= right angle connector with cable
size 10													G24WD= angled connector with cable
functional symbols													G24ZOL= right angle lamp connector without cable
size 6													G24WOL= angled lamp connector without cable
design serial number													G24ZDL= right angle lamp connector with cable
size 10													G24WDL= angled lamp connector with cable
design serial number													
THM													No code= sealing material
with position monitoring													V= FKM seals
wet-pin solenoid with detachable coil													(consult for other seals)
24V DC													Z4= standard plug
220V AC, 50Hz or 60 Hz													Z5L= large right angle lamp plug
220V AC with rectifier													No code= no manual emergency operation
													N9= with manual emergency operation



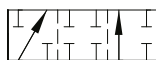
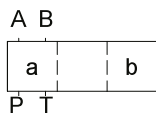
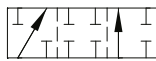
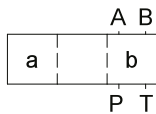
Functional symbols

Functional symbols of WE6 (10)D.../...QMBG24

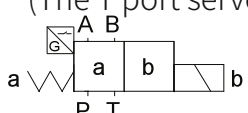
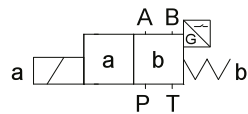


Functional symbols of WE6 (10)D.../26...

Transition function



Spool valve function



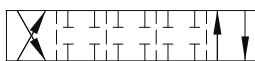
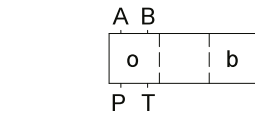
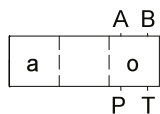
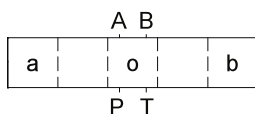
(The T port serves as drain port)

(The T port serves as drain port)

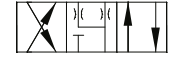
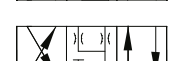
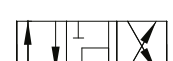
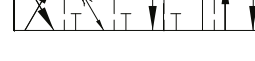
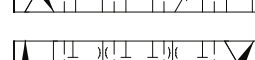
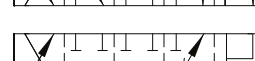
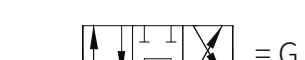
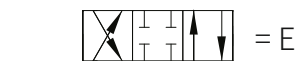
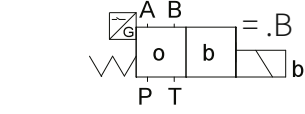
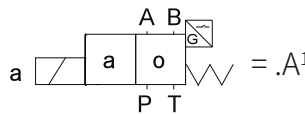
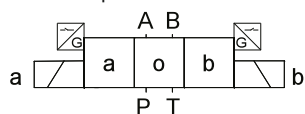
1) For example:

the function symbol A means the solenoid on side A

Transition function



Spool valve function



= L

= M

= P

= Q

= R

= T

= U

= V

= W

= W



Technical parameters

Working pressure	Port A, B, P	to 35
	Port T	to 16 (AC), to 21 (DC)
Medium		Mineral hydraulic oil or phosphate hydraulic oil
Viscosity range	mm ² /s	2.5 to 500
Temperature range	°C	-30 to +80

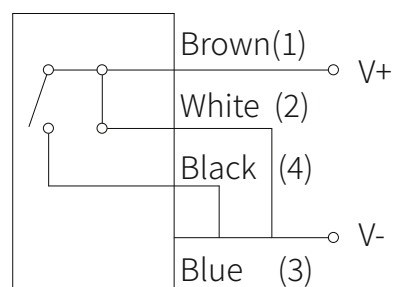
Note: When the working pressure exceeds the allowable pressure, port T must be used as drain port for symbols A and B.

Note: For characteristic curves and limits, see the catalogue of WE solenoid directional valve .

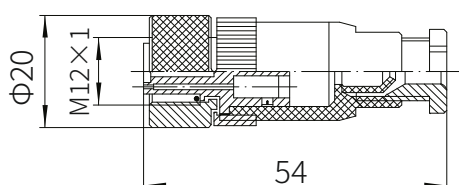
Electrical connection

Electrical connection of high voltage proximity switch: achieved by connecting plug with connection thread M12×1

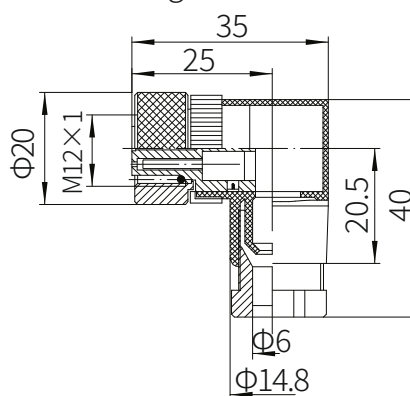
Connection voltage	24V±25%(DC)
Peak voltage	≤10%
Output voltage	Max. 200mA
Sensing frequency	600Hz



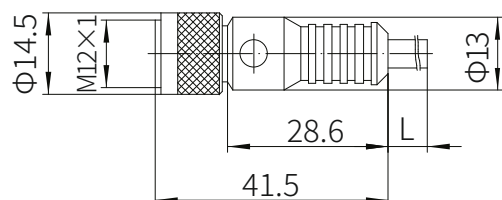
Right angle connector



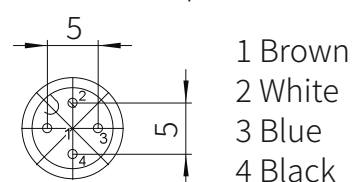
Angled connector



Cable connector (M12x1) (cable length 2m)



Pin position from side of pin

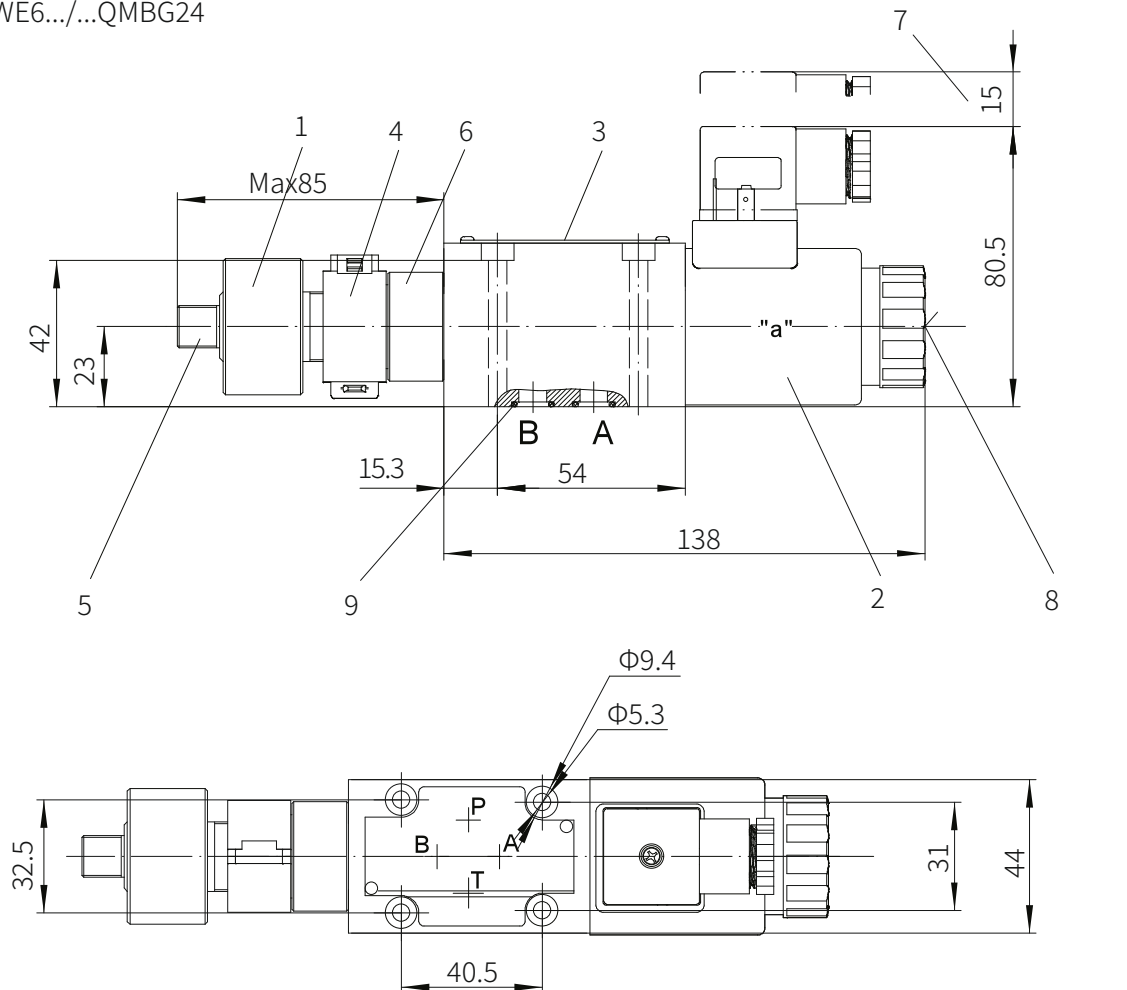




Unit Dimensions

(Dimensions in mm)

Model 4WE6.../...QMBG24



- 1 Sensor
- 2 Solenoid
- 3 Name plate
- 4 Protective cap
- 5 Connection thread M12x1 for sensor electrical connector
- 6 Transition joint
- 7 Space required to remove the plug
- 8 Hidden manual emergency operation
- 9 O ring 9.25x1.78 (for oil ports P, A, B and T)

Valve fixing screw

M5x50-10.9 grade GB/T70.1-2000

Tightening torque $M_A = 7.8 \text{ Nm}$

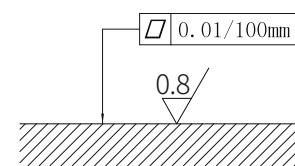
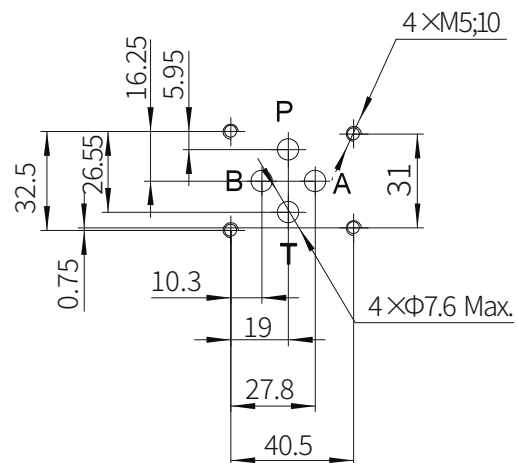
It must be ordered separately
if connection subplate is needed.

Subplate model:

G341/01 (G1/4"); G341/02 (M14x1.5)

G342/01 (G3/8"); G342/02 (M18x1.5)

G502/01 (G1/2"); G502/02 (M22x1.5)



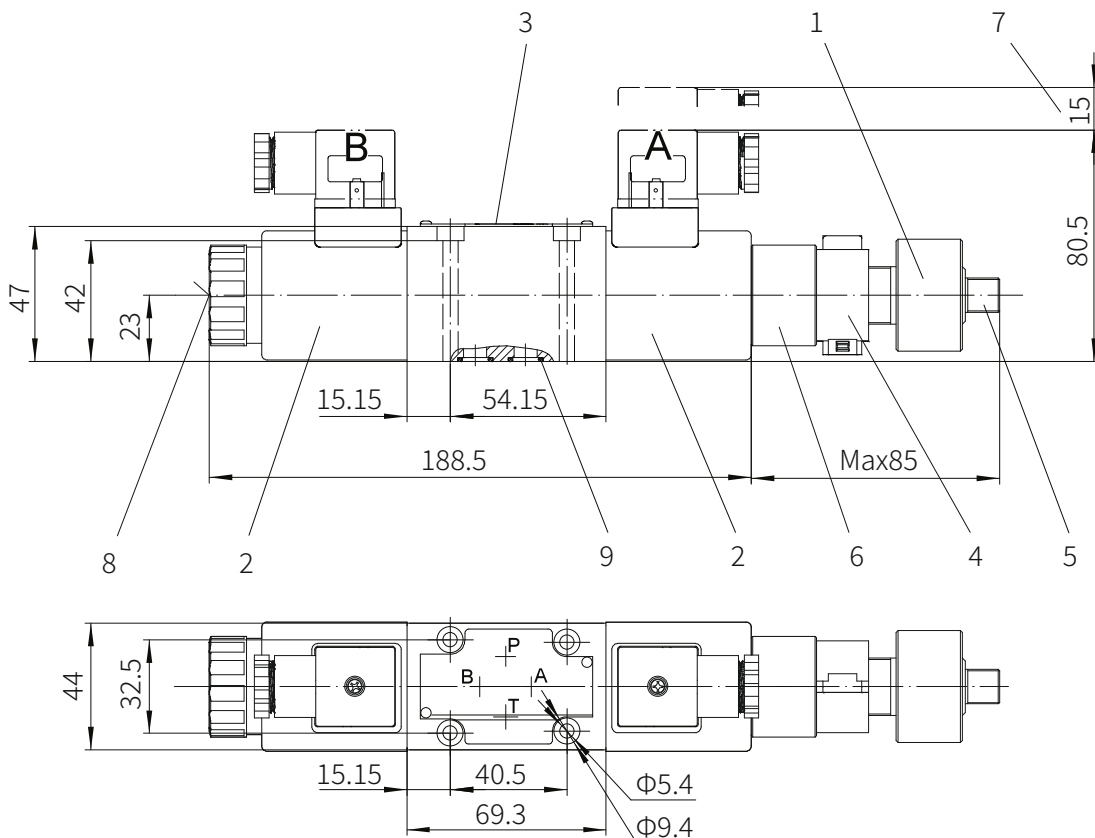
Required surface finishing of
mating components



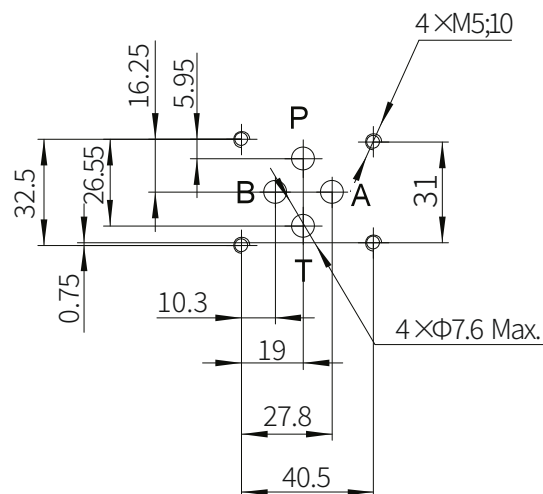
Unit Dimensions

(Dimensions in mm)

Model 4WE6.../...QMBG24



- 1 Sensor
- 2 Solenoid
- 3 Name plate
- 4 Protective cap
- 5 Connection thread M12x1 for sensor electrical connector
- 6 Transition joint
- 7 Space required to remove the plug
- 8 Hidden manual emergency operation
- 9 O ring 9.25x1.78 (for oil ports P, A, B and T)



Valve fixing screw

M5x50-10.9 grade GB/T70.1-2000

Tightening torque $M_A = 7.8\text{Nm}$

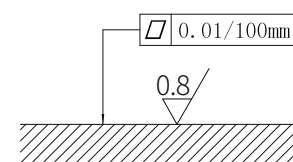
It must be ordered separately
if connection subplate is needed.

Subplate model:

G341/01 (G1/4"); G341/02 (M14x1.5)

G342/01 (G3/8"); G342/02 (M18x1.5)

G502/01 (G1/2"); G502/02 (M22x1.5)



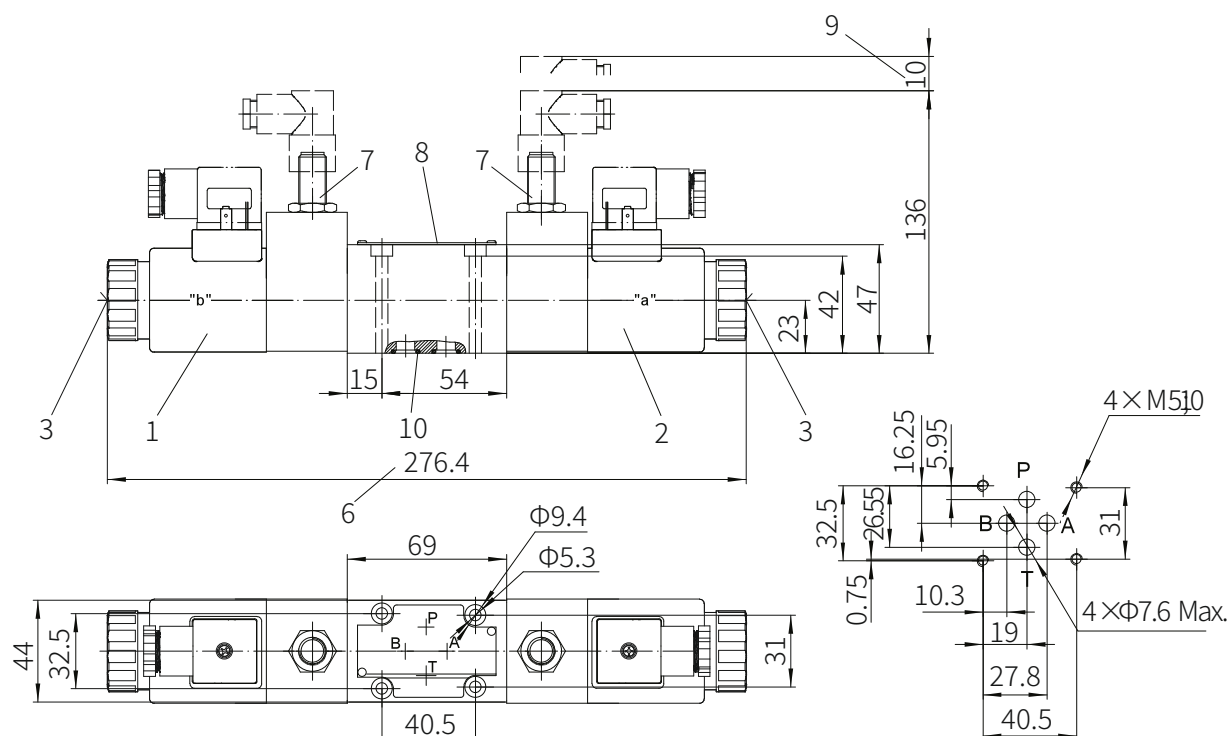
Required surface finishing of
mating components



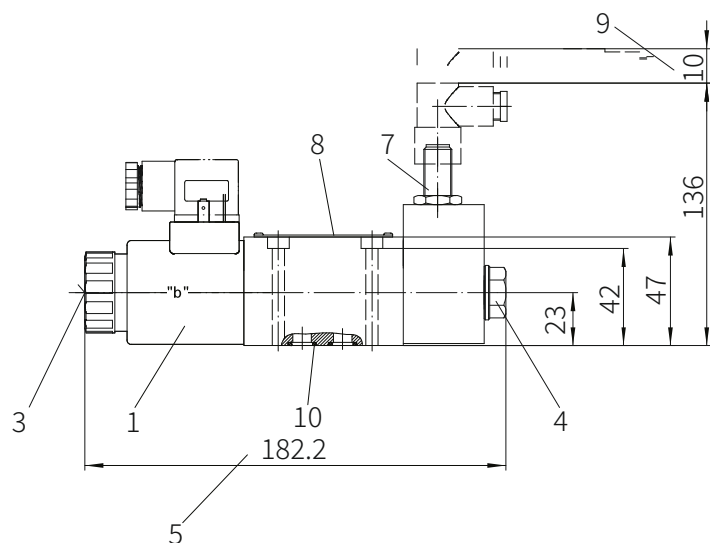
Unit Dimensions

(Dimensions in mm)

Model 4WE6.../26... 3-position valve with DC or AC rectified solenoid



Model 4WE6.../26... 2-position valve with DC or AC rectified solenoid



- 1 Solenoid
- 2 Solenoid
- 3 Hidden manual emergency operation
- 4 Plug for 2-position valve
- 5 Size for 2-position valve
- 6 Size for 3-position valve
- 7 High voltage proximity switch
- 8 Name plate
- 9 Space required to remove the connector
- 10 O ring 9.25x1.78 (for oil ports P, A, B, T)

Valve fixing screw

M5x50-10.9 grade GB/T70.1-2000

Tightening torque $M_A=7.8\text{Nm}$

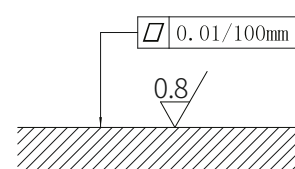
It must be ordered separately
if connection subplate is needed.

Subplate model:

G341/01 (G1/4"); G341/02(M14x1.5)

G342/01 (G3/8"); G342/02(M18x1.5)

G502/01 (G1/2"); G502/02(M22x1.5)



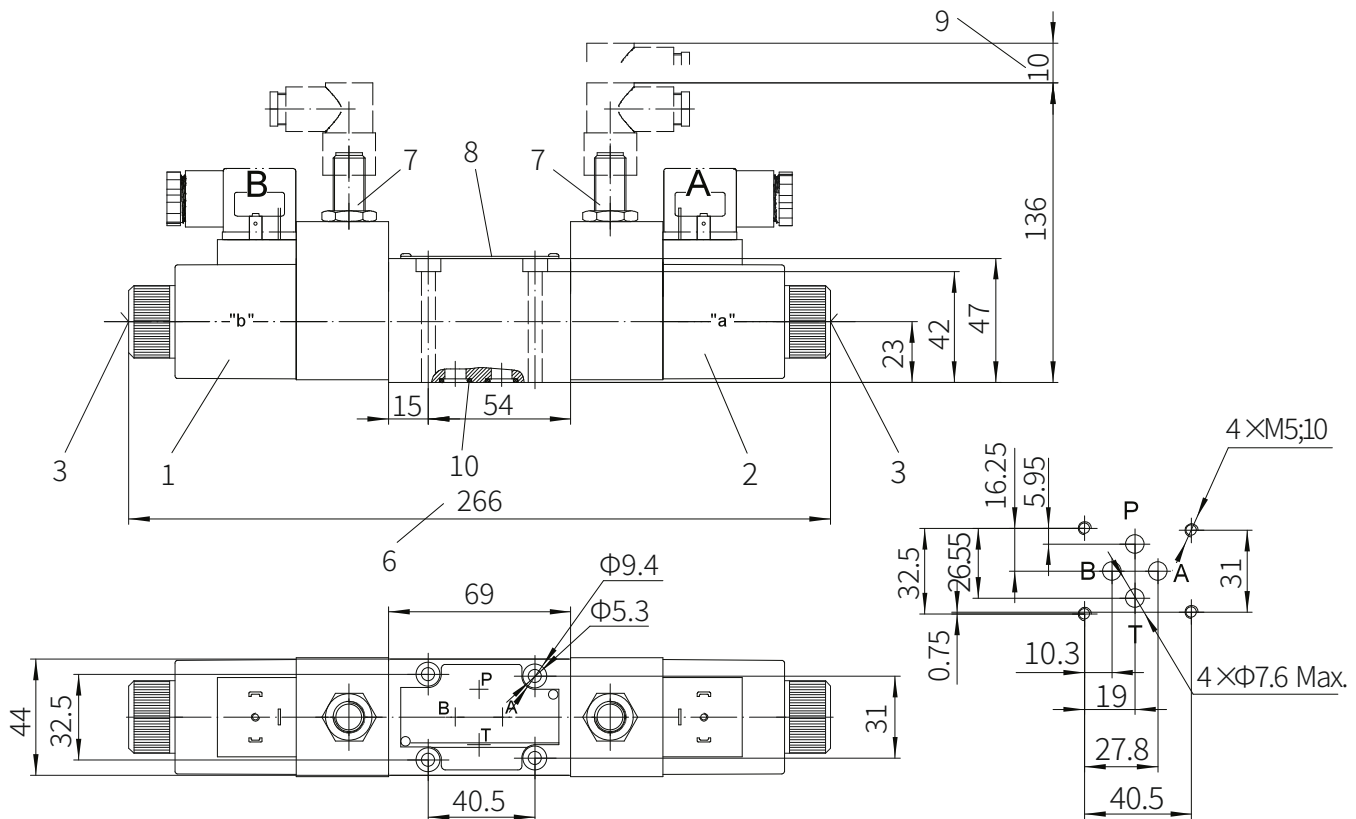
Required surface finishing of
mating components



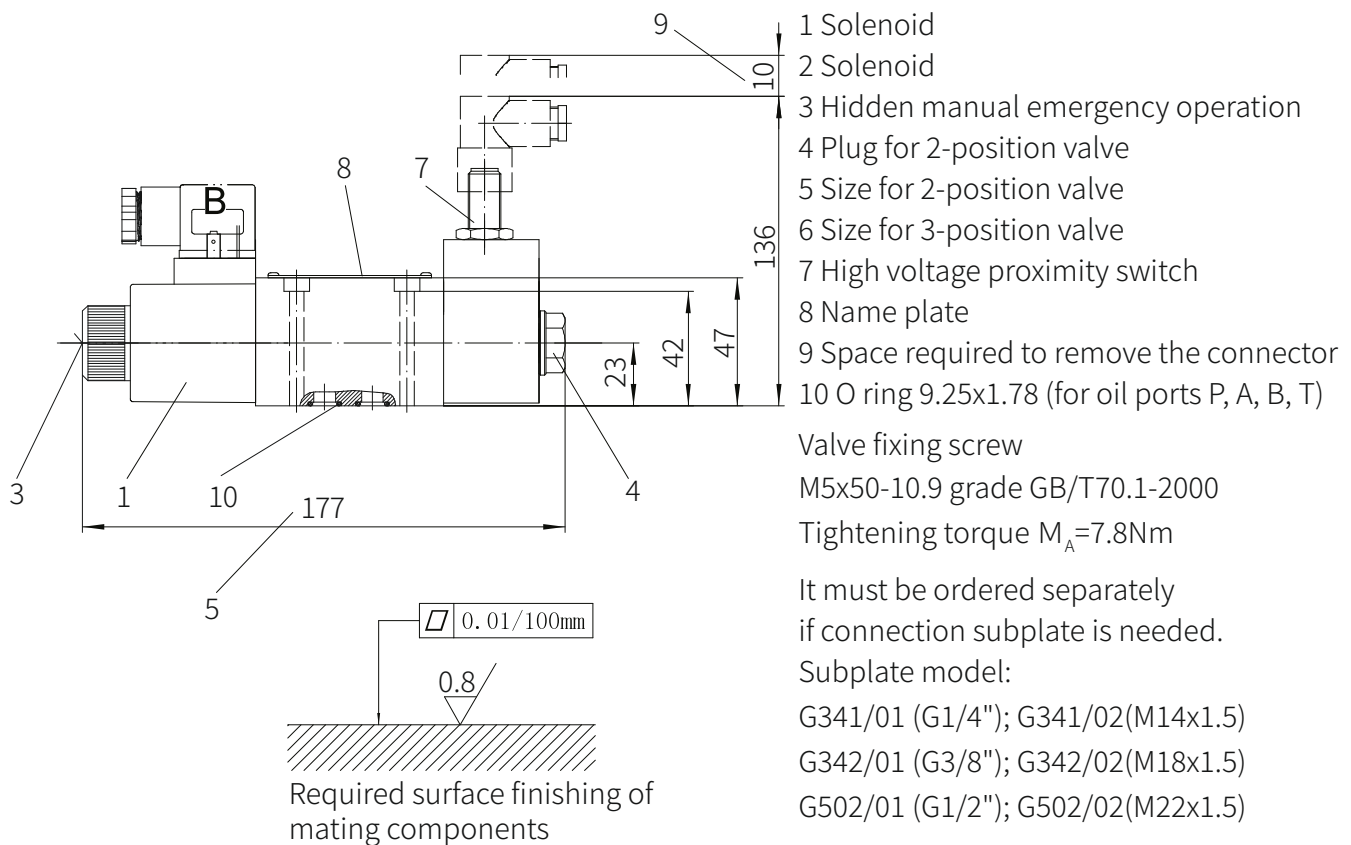
Unit Dimensions

(Dimensions in mm)

Model 4WE6.../26... 3-position valve with AC solenoid



4WE6.../26... 2-position valve with AC solenoid

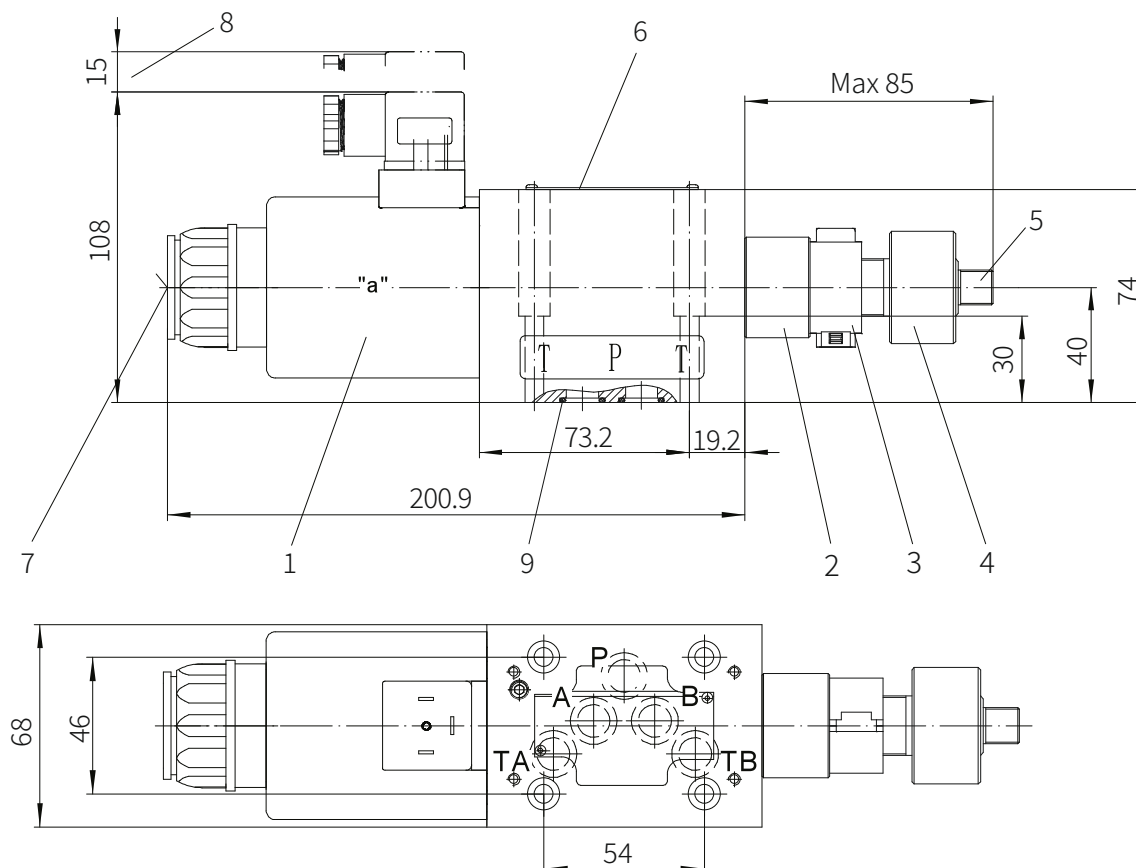




Unit Dimensions

(Dimensions in mm)

Model 4WE10D.../...QMBG24

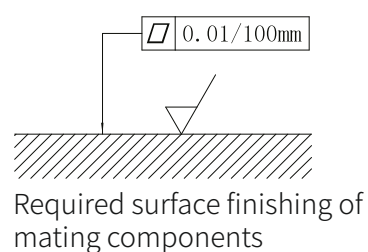
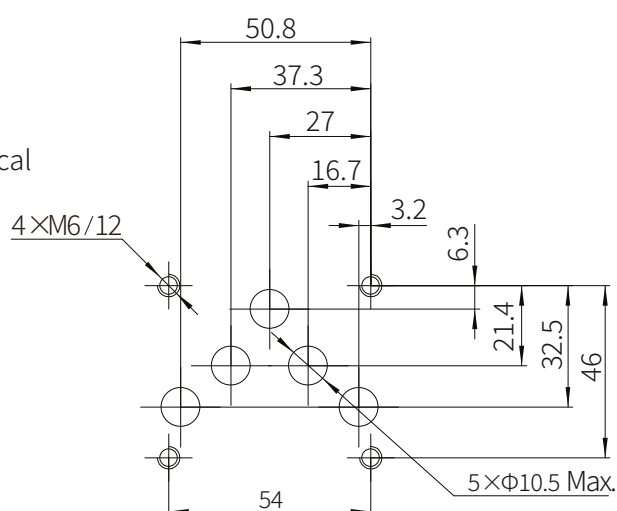


- 1 Solenoid
- 2 Transition joint
- 3 Protective cap
- 4 Sensor
- 5 Connection thread M12x1 for sensor electrical connector
- 6 Name plate
- 7 Hidden manual emergency operation
- 8 Space required to remove the plug
- 9 O ring 10X2 (for oil ports P, A, B and T)

Valve fixing screw
M6x40-10.9 grade GB/T70.1-2000
Tightening torque $M_A=13.7\text{Nm}$

It must be ordered separately
if connection subplate is needed.
Subplate model:

G66/01(G3/8"); G66/02(M18x1.5)
G67/01(G1/2"); G67/02(M22x1.5)
G534/01 (G3/4"); G534/02(M27x2)

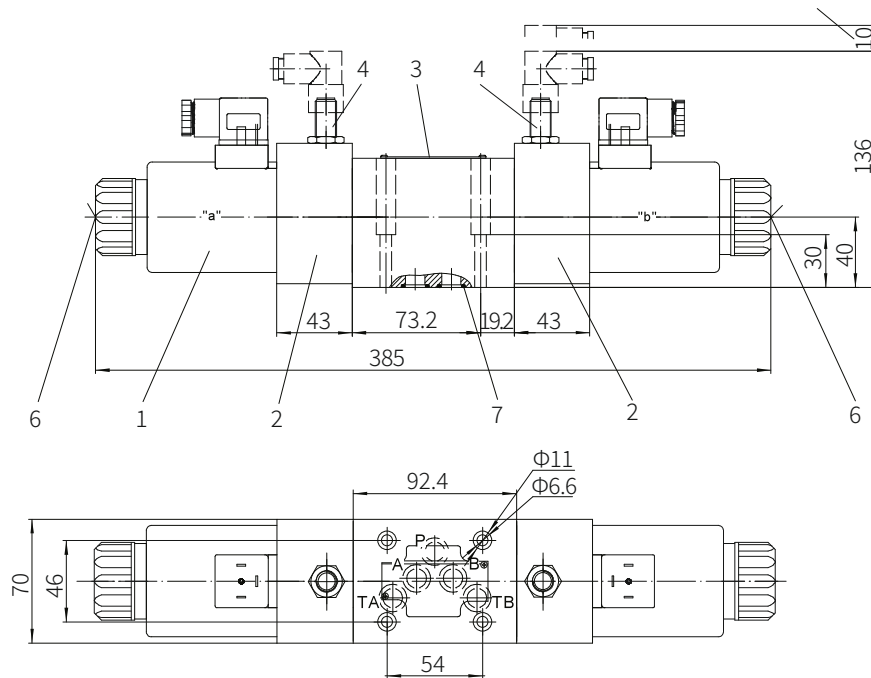




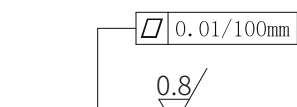
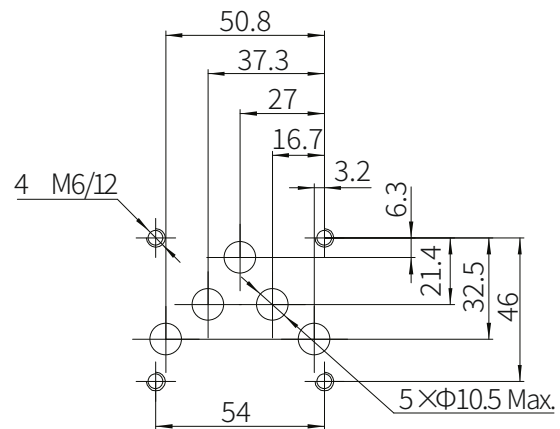
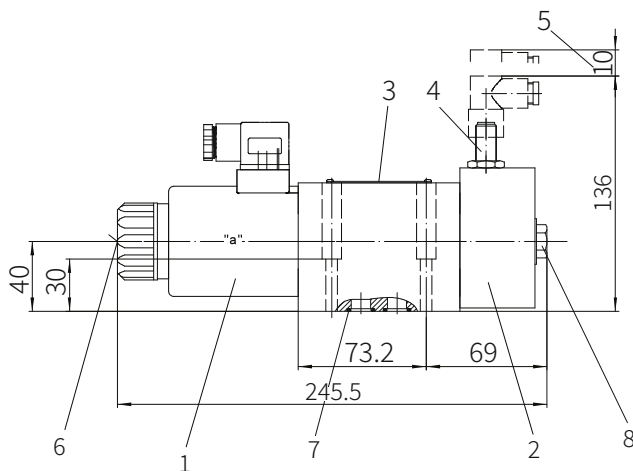
Unit Dimensions

(Dimensions in mm)

Model 4WE10.../26... 3-position valve with DC or AC rectified solenoid



4WE10.../26... 2-position valve with DC or AC rectified solenoid



Required surface finishing of mating components

Valve fixing screw

M6x40-10.9 grade GB/T70.1-2000

Tightening torque $M_A = 13.7\text{Nm}$

- 1 Solenoid
- 2 Transition cover
- ×3 Name plate
- 4 High voltage proximity switch
- 5 Space required to remove the connector
- 6 Hidden manual emergency operation
- 7 O ring 10X2 (for oil ports P, A, B and T)
- 8 Plug for 2-position valve

It must be ordered separately if connection subplate is needed.

Subplate model:

G66/01(G3/8"); G66/02(M18x1.5)

G67/01(G1/2"); G67/02(M22x1.5)

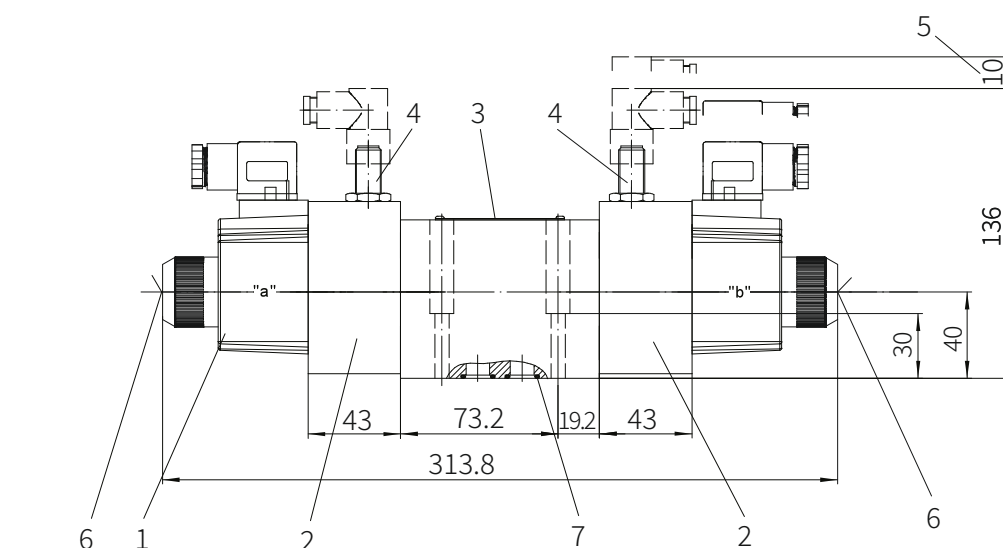
G534/01 (G3/4"); G534/02(M27x2)



Unit Dimensions

(Dimensions in mm)

Model 4WE10.../26... 3-position valve with AC solenoid



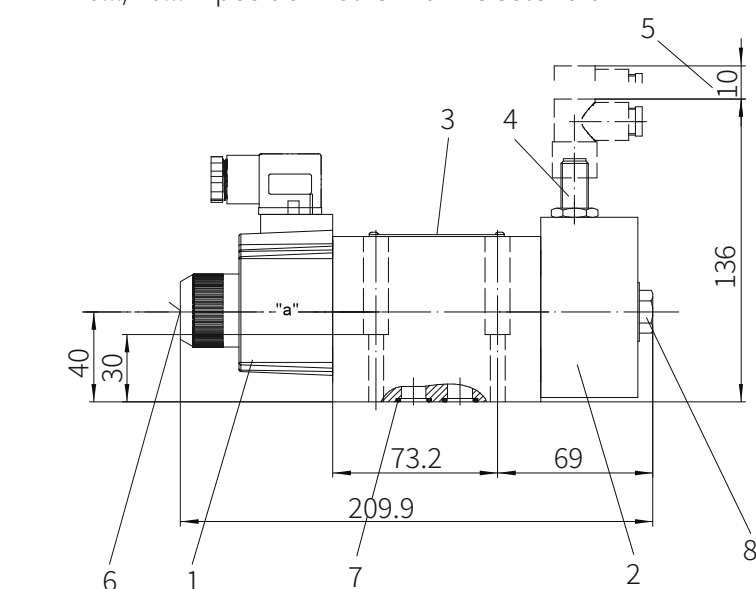
- 1 Solenoid
- 2 Transition cover
- 3 Name plate
- 4 High voltage proximity switch
- 5 Space required to remove the connector
- 6 Hidden manual emergency operation
- 7 O ring 10X2 (for oil ports P, A, B and T)
- 8 Plug for 2-position valve

Valve fixing screw

M6x40-10.9 grade GB/T70.1-2000

Tightening torque $M_A=13.7\text{Nm}$

4WE10.../26... 2-position valve with AC solenoid



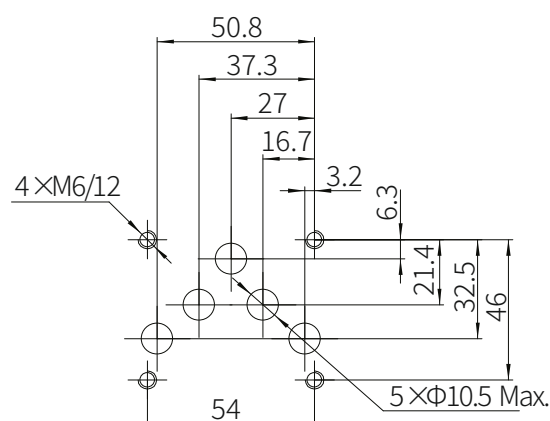
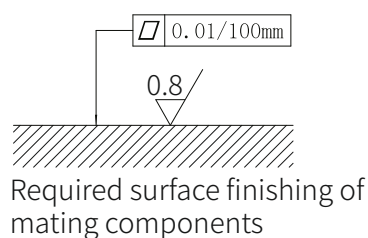
It must be ordered separately
if connection subplate is needed.

Subplate model:

G66/01(G3/8"); G66/02(M18x1.5)

G67/01(G1/2"); G67/02(M22x1.5)

G534/01 (G3/4"); G534/02(M27x2)

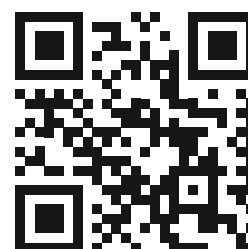


The specified data is for product description purposes only and may not be deemed to be guaranteed unless expressly confirmed in the contract.



THM Huade Hydraulics Pvt Ltd

F-127, Phase-VIII, Focal Point,
Ludhiana-141010, Punjab (INDIA)
PH: 0161-2672777, 0161-2672778
E-mail: sales@thmhuade.com
Website: www.thmhuade.com



Follow us:

