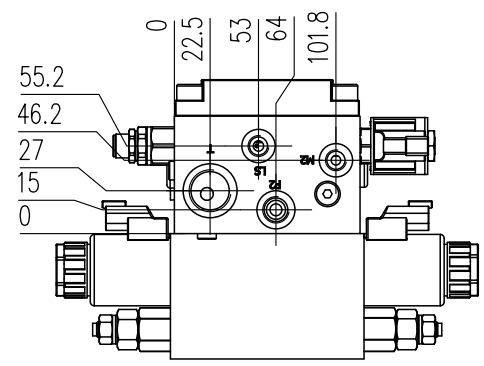
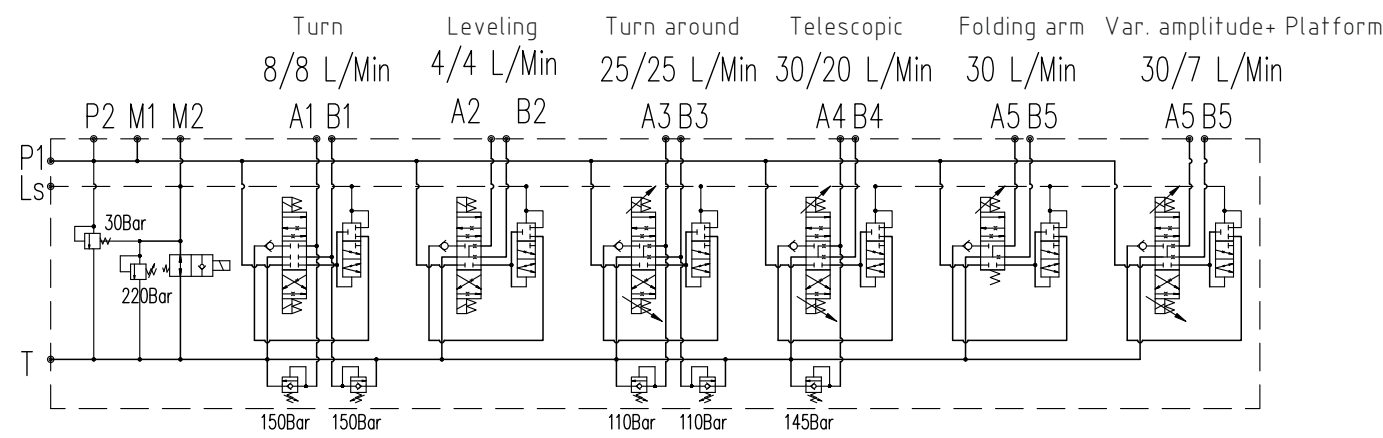
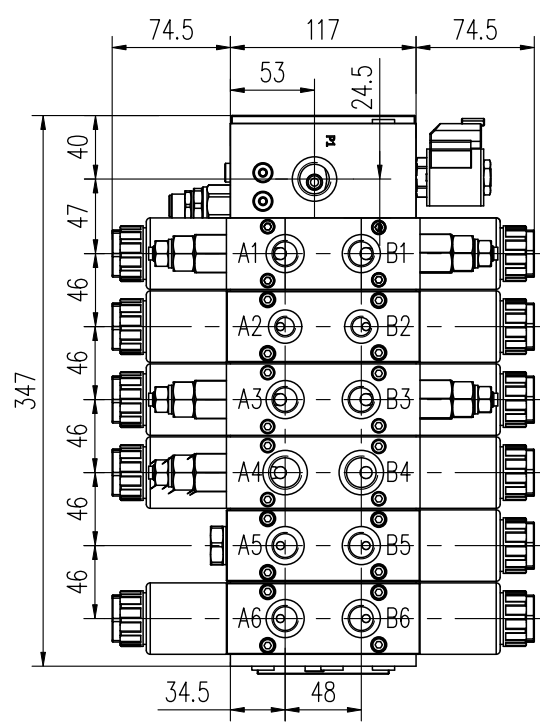
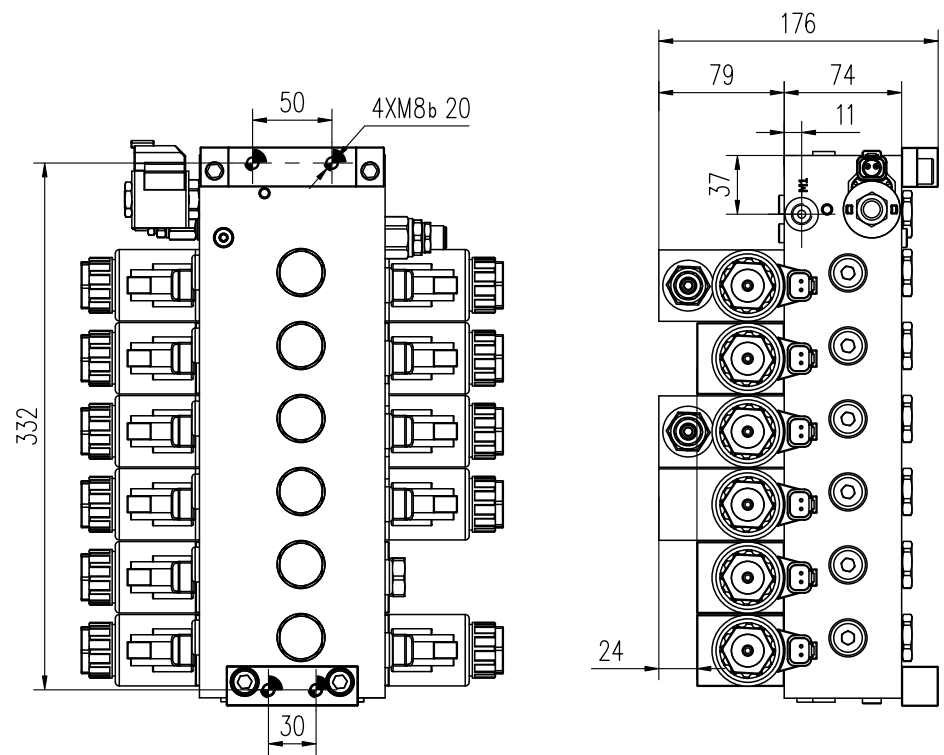


A  
B  
C  
D  
E  
F  
G  
H



Technical parameters

1. Rated flow rate: 60L/min, rated pressure: 250bar.
2. Solenoid valve: voltage: 12V±15% DC, current: 550-1800mA
3. Factory setting pressure of main relief valve: 230bar, Ls relief valve setting: 200bar
4. Working oil temperature: -20°C - +90°C.
5. Solenoid valve connector: DTO4-2P, waterproof performance level: IP=69K.
6. Valve body surface is zinc-nickel alloy plated
7. Allowable contamination level: within NAS9 level

Oil port  
1.T:G3/4 ,  
2.P1、A4、B4:G1/2 DIN3852  
3.P2、A1、A3、A5、A6、  
B1、B3、B5、B6:G3/8 DIN3852  
4.LS、M1、M2、A2、B2:G1/4 DIN3852

UNLESS OTHERWISE STATED ALL DIMENSIONS IN MM TOL. - LINEAR: ±0.2 - ANGULAR: ±0.1				THM HYDRAULICS THM HUADE HYDRAULICS PVT LTD EMAIL: sales@thmhuade.com, salesho@thmhuade.com		DESCRIPTION: 28M HIGH EMPTY CAR CONTROL MAIN VALVE PRODUCT UID: T014511989	
DESIGNED	STANDARD	MATERIAL:		WEIGHT:		SCALE:	
COLLATED	APPROVED	DWG NO.:		I/ NO.:			
CHECKED	MATERIAL/HEAT						
REV	ALTERATION	DATE	DESIGNED	APPROVED	WPCR		
				TECHNICS	PASS		