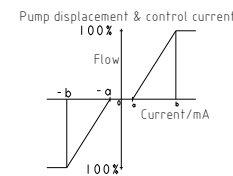
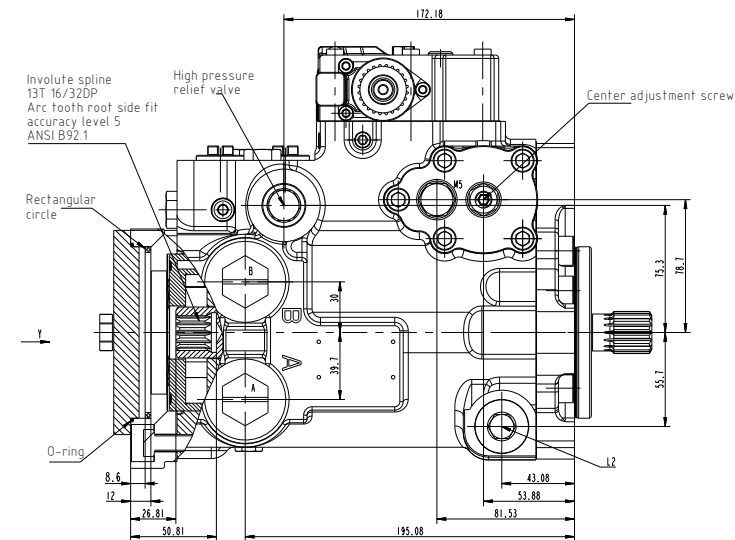
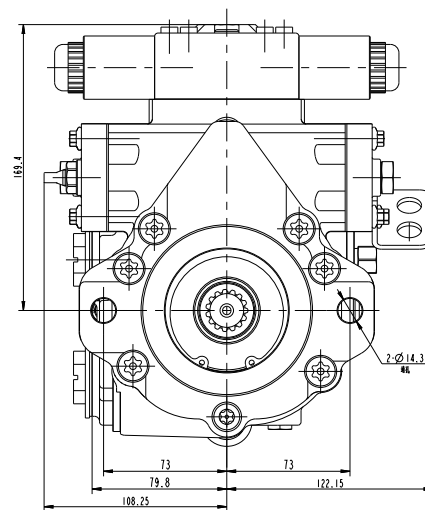
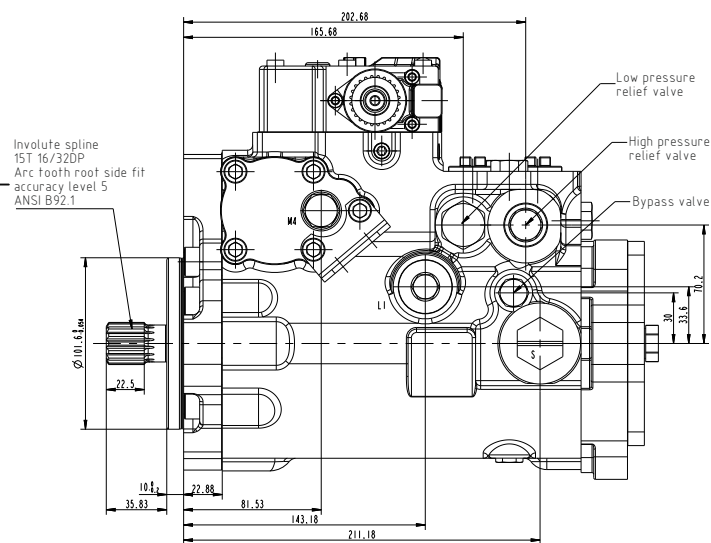
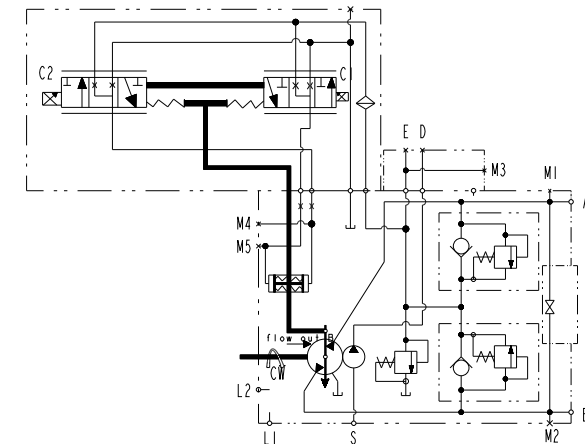


Detsch DT04-2P
Voltage: 12V
Resistance: 7Ω



Rotation	CW	
Energized coil	C2	C1
Oil port A	In	Out
Port B	Out	In
Servo pressure action port	M5	M4



Direction of Rotation		Right hand
Pump Structure		Swashplate variable pump
Control method:		Electric proportional displacement control
Theoretical displacement (cm ³ /rev)		45.9
Speed (rpm)	Rated	2500
	Maximum	4100
	Minimum	500
System pressure(MPa)	Rated(Relative to charge pressure)	28
	Maximi(Relative to charge pressure)	38.5
	Minimu (Relative to charge pressure)	1
Charge oil pressure(MPa) (relative to case pressure)	Minimum pressure	0.6
	Maximum Pressure	3.1
Control pressure(MPa) (relative to case pressure)	Minimum value at angular power	1.95
	Continue	0.17
Shell pressure (MPa)	Maximum (cold start)	0.52
	Rated	0.08
Injection pressure(MPa) (absolute pressure)	Maximum	0.6

Oil port	Oil port name	Oil port size & type
S	Suction port	SAE J1926/1(1 5/16"-12UN-2B)
A, B	Working oil port	SAE J1926/1(1 5/16"-12UN-2B)
L1, L2	Oil inlet	SAE J1926/1(1 1/16"-12UN-2B)
M1, M2	pressure gauge	SAE J1926/1(19/16"-18UN-2B)
M3	charge pump pressure gauge port	SAE J1926/1(19/16"-18UN-2B)
M4, M5	Servo pressure gauge port	SAE J1926/1(19/16"-18UN-2B)
D	Connect to remote filter oil port	SAE J1926/1(7/8"-14UN-2B)
E	Remote filter to pump port	SAE J1926/1(7/8"-14UN-2B)
F	Exhaust hole	SAE J1926/1(7/16"-20UN-2B)

1. Installation precautions
- Technical requirements
- (1) Before installation, the cleanliness level of the mailbox and connecting pipes must meet ISO 4406 18/15.
- (2) Before installation, make sure that there are no burrs on the joint surfaces and that the installation surfaces are free of debris and dust.
- (3) During the installation process, a lifting device should be used.
- (4) When lifting, avoid touching the oil port sealing surface.
- (5) Be especially careful not to allow debris to enter the oil port.
- (6) Do not damage the drive shaft. Please loosen the lifting device after tightening the mounting screws.
- (7) When connected to the main engine, the coaxiality between the main shaft and the engine main shaft (or connecting sleeve) shall not exceed 0.05mm.
2. Precautions for use
- (1) Before operation, inject hydraulic oil into the pump body from the housing oil drain ports 1 and 12.
- (2) Before operation, the air in the casing must be exhausted.
- (3) When in use, there should be no hydraulic oil or other liquid residue on the joint surfaces of the pump.
- (4) When the pump is running, avoid collision with the drive shaft.

[illegible]

THM HUADE HYDRAULICS PVT LTD
EMAIL: sales@thmhuae.com, salesho@thmhuae.com

DESCRIPTION:

AXIAL PISTON PUMP

PRODUCT UID: T014511981

SCALE:	DWG NO.:	I / NO.:
--------	----------	----------