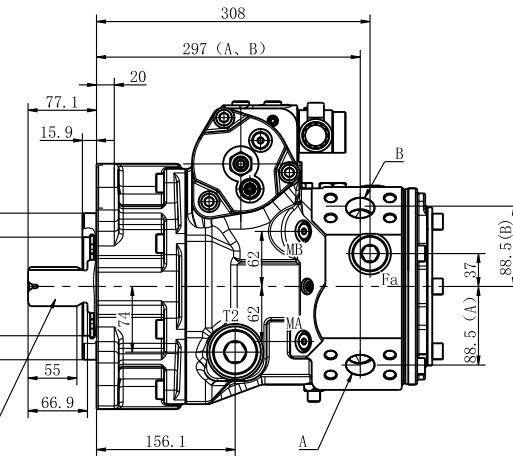
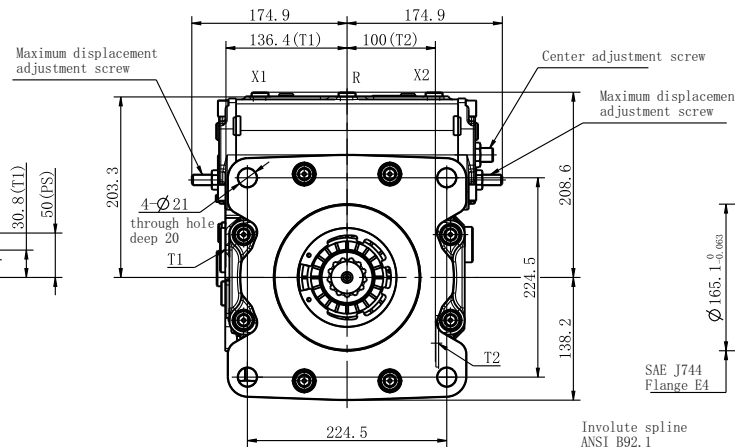
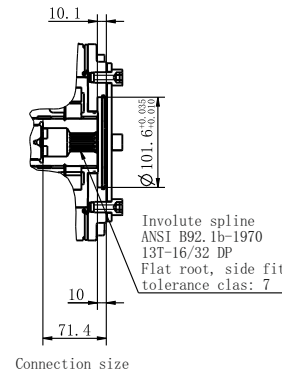
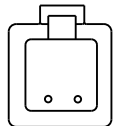


Rev. No	Revision note	Date	Signature	Checked




Pump displacement and control current

Note: current $a = 150\text{mA}$, $b = 600\text{mA}$



Solenoid connector: Deutsch DT04-2P
Voltage: 24V DC
Resistance: 19 Ω
Maximum current: 700mA
Current dither frequency: 120Hz
Current dither amplitude: 200mA

V View

						 UNLESS OTHERWISE STATED ALL DIMENSIONS IN MILLIMETERS TOL. - LINEAR: ±0.10 - ANGULAR: ±5'	
						DESIGNED	STANDARD
						COLLATED	APPROVED
						CHECKED	MATERIAL/HEAT
REV	ALTERATION	DATE	DESIGNED	APPROVED	NP/CR	TECHNICS	PASS

 **THM**
HYDRAULICS

THM HUADE HYDRAULICS PVT LTD
EMAIL: sales@thmhuade.com, salesho@thmhuade.com

DESCRIPTION:		
FRONT PUMP		
PRODUCT UID: T014511983		
SCALE:	DWG NO.:	I / NO.: