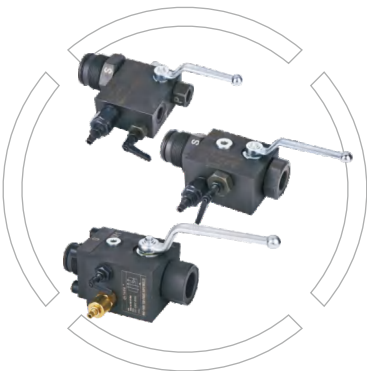


TH-ASB

Accumulator Safety Block
Nominal Diameter: 10, 20, 32
Maximum pressure up to 315 Bar



Index	Page No
• Product overview	02
• Hydraulic Symbol	02
• Ordering code	02
• Valve Block External Dimensions	03
- TH-ASB10 energy storage safety valve block	03
- TH-ASB20 energy storage safety valve block	04
- TH-ASB32 energy storage safety valve block	05

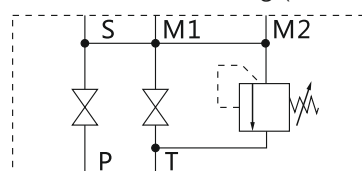


Product Overview

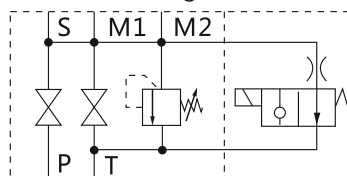
TH-ASB type energy storage safety valve block, a specialized valve block applicable for domestic energy storage, is used to control the fluid switching, over pressure protection, pressure releasing protection, and unloading and draining fluid. It is composed of stop valve, internal overflow valve and manual unloading valve. A plug-in two-way electromagnetic selector valve is optional for unloading. TH-ASB type safety stop valve has the advantages of reliable performance, compact structure, and convenient operations.

Hydraulic Symbols

With manual unloading (TH-ASB*M)



With electromagnetic unloading (TH-ASB*E)



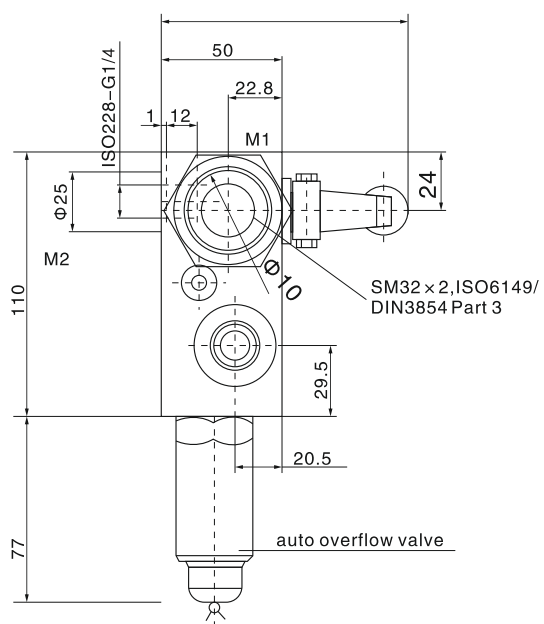
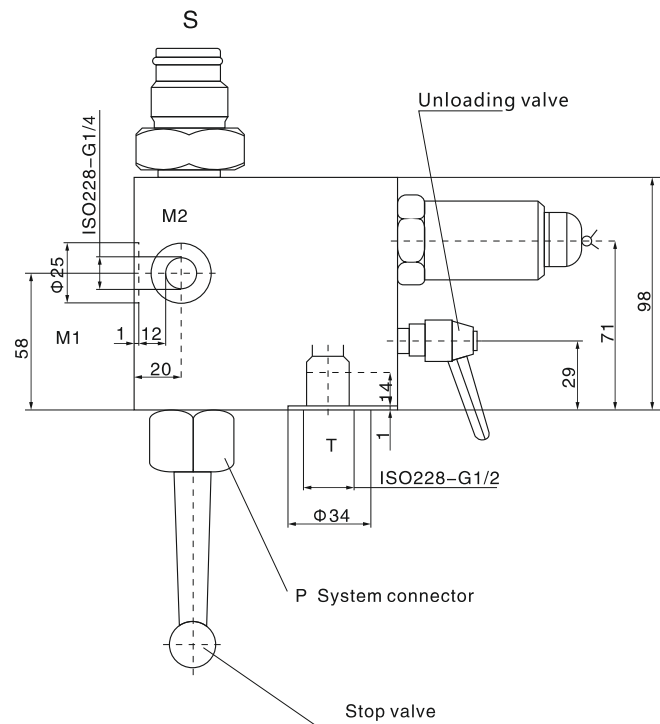
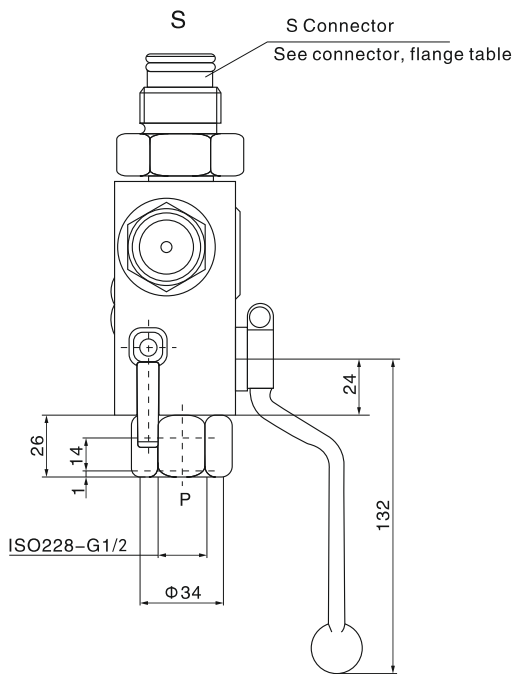
Ordering code

Product code: Safety top valve block = TH-ASB									Electromagnetic and manual unload: To energy storage (see V. connector flange table), for example S13-ISO228-G2A		
Nominal diameter: 10, 20, 32									Thread connecting standard: A = IS0228(BSP) B = DIN13,/conforming to ISO965/1/nominal C = ANSI B1.1(UNF,O ring sealing, conforming to SAE) / without M2/pressure testing port		
Unloading: Manual unload = M Electric and manual = E									Pressure set value: e.g 210 bar to 315 bar		
Block material: Carbon steel = 1 Stainless steel 304 = 2 Stainless steel 316 = 3									Overflow valve: Adjustable through the spanner		
Sealing material: NBR Rubber = 2 EPDM = 5 FPM = 6						N =			Voltage type: 24VDC 110-115VAC 220-230VAC Others		
Electromagnetic and manual unload: Start unloading = Y Unloading closed = Z						1 = 2 = 3 = 7 =					



Valve Block External Dimensions

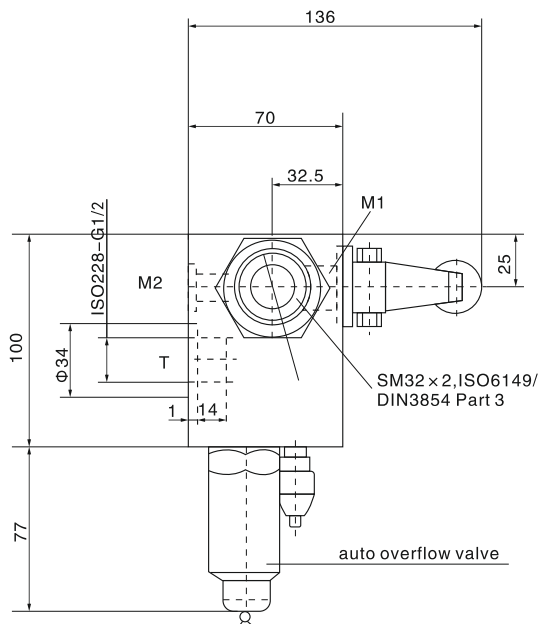
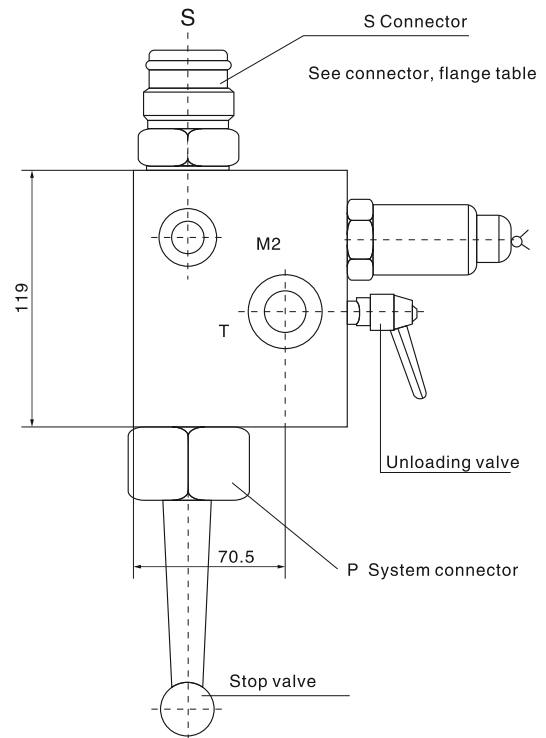
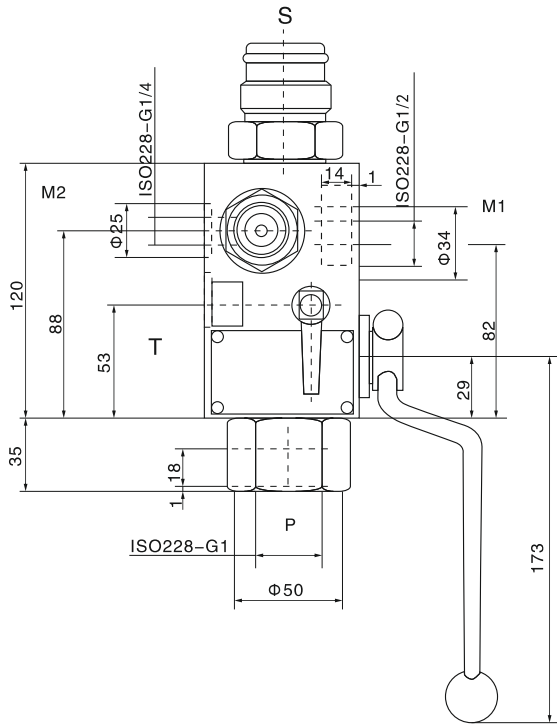
TH-ASB10 energy storage safety valve block





Valve Block External Dimensions

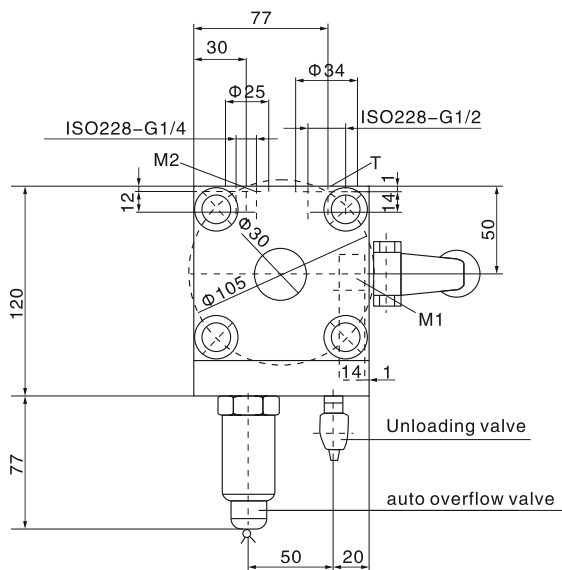
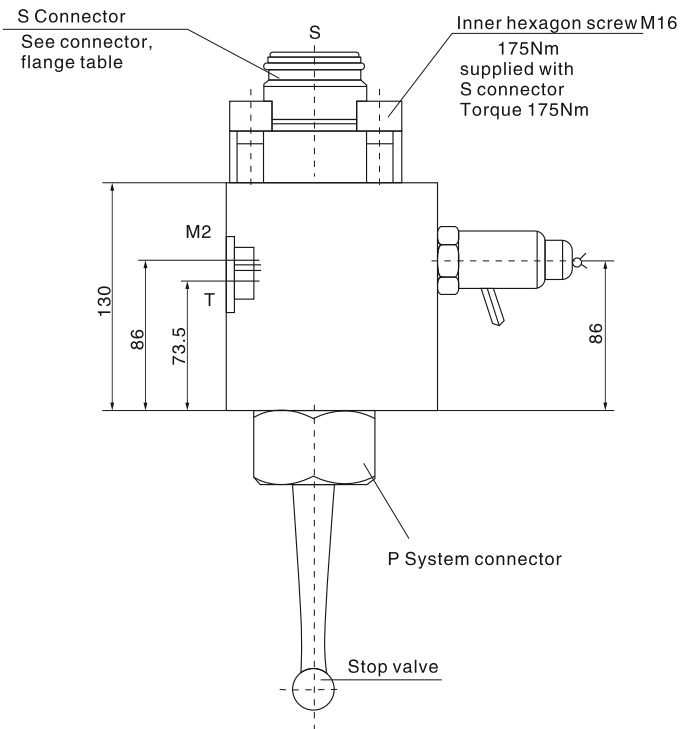
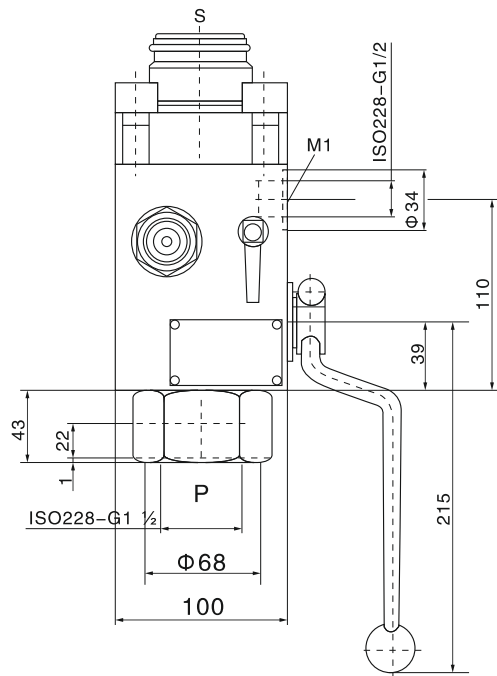
TH-ASB20 energy storage safety valve block





Valve Block External Dimensions

TH-ASB32 energy storage safety valve block





Valve Block External Dimensions

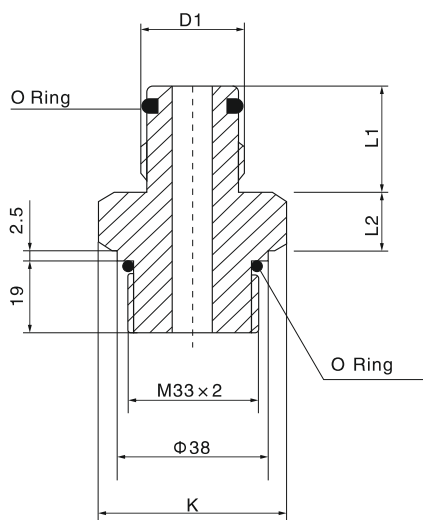


Diagram 1

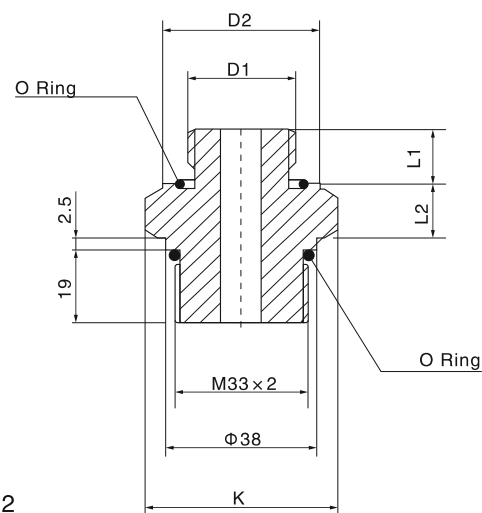


Diagram 2

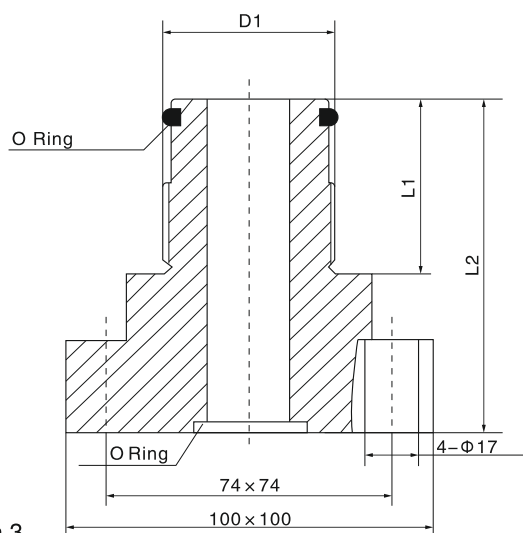


Diagram 3

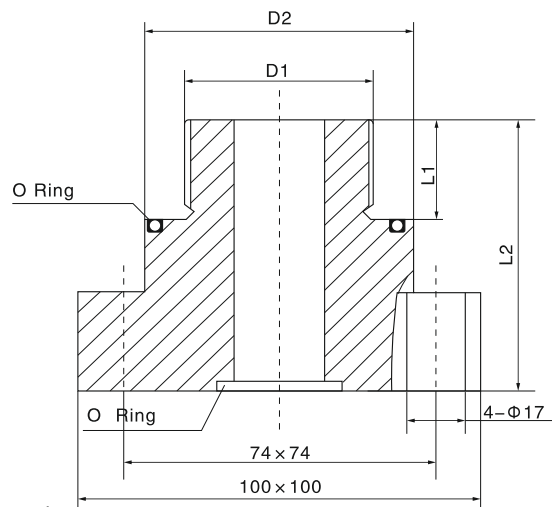


Diagram 4

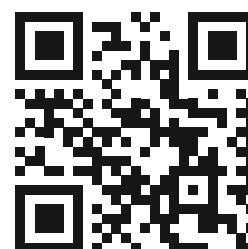
Connector type	Accumulator type	D1 connecting thread	Connector	Diagram No.	KSW	L1 (mm)	L2 (mm)	D2 (mm)	O ring
TH-ASB10/20 TH-DSV10	AB 330/400-0.5 bis 1 I	G3/4A	S10	1	41	28	15.5		17x3
	AB 550/600-1 bis 5 I	G1A	S11		46	34	16.5		22x3
	AB 330/400-2.5 bis 1 I	G11/4A	S12			37			30x3
	AB330/400-10 bis 50 I	G2A	S13		65	44	20.5		48x3
	AB440/500/600-10 bis 50 I								
	Nominal fine thread connecting	M30x1.5	S20	2	42	15	17.5	40	32x3
		M40x1.5	S21		55	20	20.5	54	43x3
		M50x1.5	S22		65	20	20.5	64	53x3
TH-ASB32	AB330/400-0.5 bis 1 I	G3/4A	S305	3		28	58		17x3
	AB550/600-1 bis 5 I	G1A	S306			34	64		22x3
	AB 330/400-2.5 bis 5 I	G11/4A	S307			37	67		30x3
	AB330/400-10 bis 50 I	G2	S309			44	74		48x3
	AB440/500/600-10 bis 50 I		S308				115		
	Nominal fine thread connecting	M30x1.5	S330	4		15	47	45	32x3
		M40x1.5	S340			20	51	60	43x3
		M50x1.5	S350					75	53x3

The specified data is for product description purposes only and may not be deemed to be guaranteed unless expressly confirmed in the contract.



THM Huade Hydraulics Pvt Ltd

F-127, Phase-VIII, Focal Point,
Ludhiana-141010, Punjab (INDIA)
PH: 0161-2672777, 0161-2672778
E-mail: sales@thmhuade.com
Website: www.thmhuade.com



Follow us:

