

Type TPF2G4-M

High pressure gear pump
Flow 40 to 100cc
Maximum operating pressure 250bar



Index	Page No
• Features	02
• Ordering code	02
• Unit dimensions TPF2G4	03
• Port details	03
• Performance data, Dimensions and port details	04



Features

- Unique sealing design to operate up to 250 bar continuous
- Special alloy bush with unique lock design for maximum rigidity
- Modified gear tooth to lower operating torque
- 100% testing on computerised test bench
- Long service life
- Pumps in "V" option available to operate up to -10°C and +120°C
- Completely manufactured on CNC machines
- Threaded and flange port available
- Covers applications for high pressures, substituting costly piston pumps depending on application
- New principal of hydrostatic gap compension
- Double pumps available check with us.

Ordering code

TPF2G4-M		1X/							*
Series 11 to 19			Further details Series 11 to 19						
Flow cc/rev.			No code = Single pump						
40cc		= 040	S = Rectangular flange, dia 50.8mm spigot B = SAE-A, 2 hole flange, dia 101.6mm spigot						
50cc		= 050							
63cc		= 063							
71cc		= 071							
80cc		= 080							
90cc		= 090							
100cc		= 0100							
Rotation			V = FKM Seals up to +120°C M = NBR Seals up to +80°C						
Clockwise rotation		= R	01 = "G" BSP Thread ports as per ISO 228/1 (on request consult) 05 = "E" flange on suction and delivery ports 07 = SAE flange on suction and delivery ports						
Anti-clockwise		= L							
Parallel/cyl shaft ISO 32mm		= A							
Splined shaft 21.81 dia, DP16/32-13 teeth		= R							
Taper shaft 19mm, 1:8		= C							

Permissible torque at drive shaft:

R= Splined shaft SAE-A 7/8", $T_{max} = 500 \text{ Nm}$

A= Parallel keyed shaft 32mm, $T_{max} = 400 \text{ Nm}$

C= Conical shaft 1:8, dia 21.6mm, $T_{max} = 300 \text{ Nm}$

Available flange & shaft combinations

Cylindrical shaft 22.22mm

Tapered shaft 21.6mm

Splined shaft SAE-B, 7/8", 13t

Cylindrical shaft 22.22mm

"A" + Rectangular flange

"C" + Rectangular flange

"R" + SAE-A, 2-bolt flange

"A" + SAE-A, 2-bolt flange

"B" + 50.8mm spigot

"B" + 50.8mm spigot

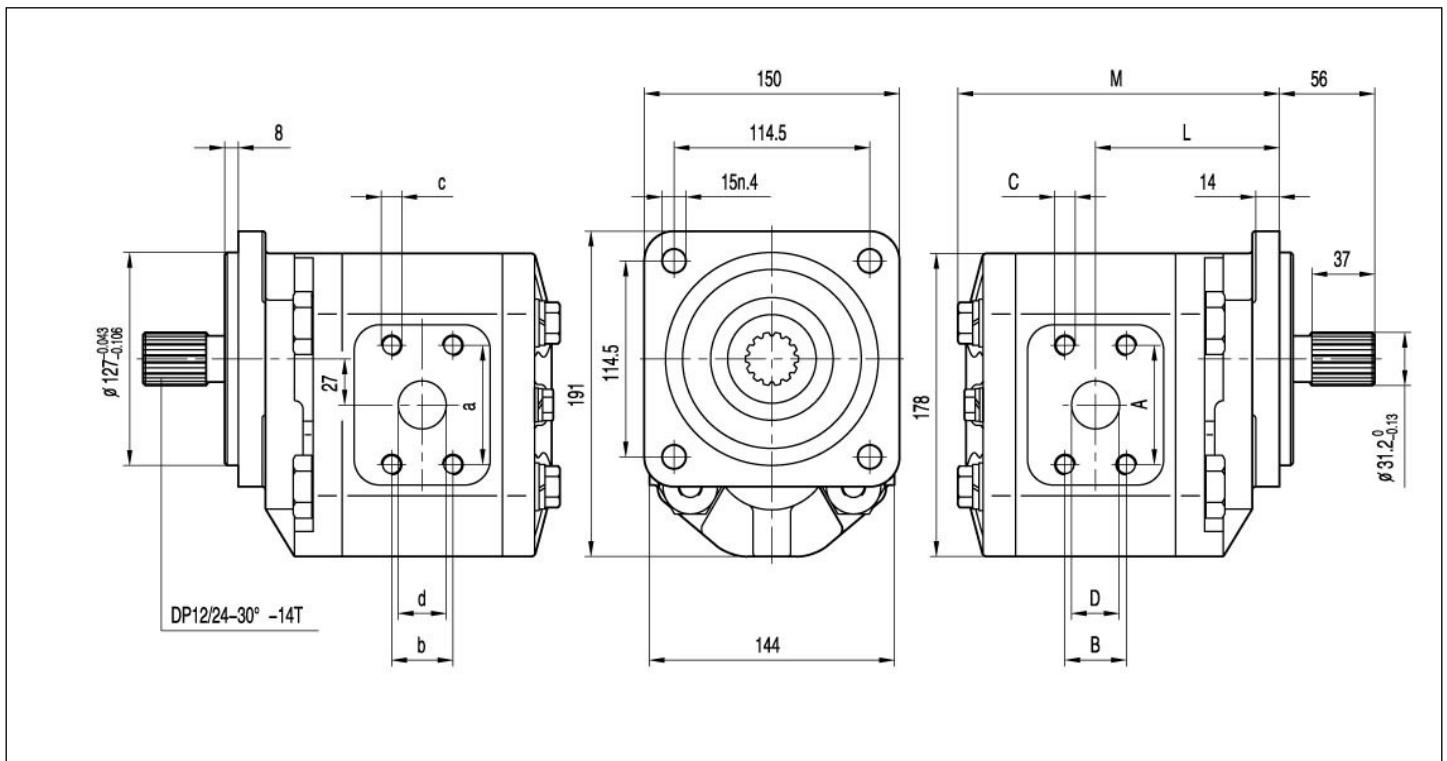
"R" + 101.6mm spigot

"R" + 101.6mm spigot



Unit dimensions TPF2G4

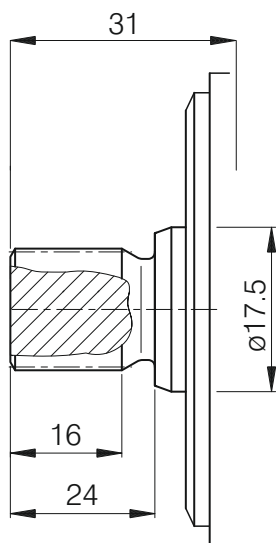
(dimensions in mm)



Port details

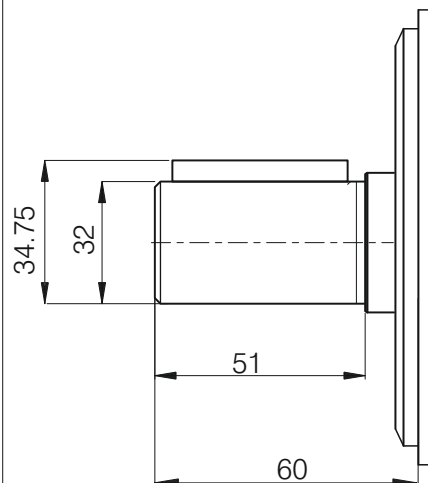
“R”

Splined shaft SAE-B 7/8"
(13 teeth 16/32DP)



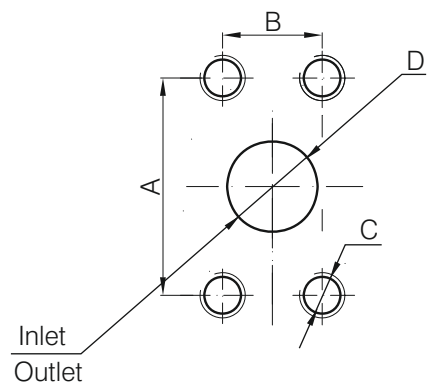
“A”

Parallel keyed shaft



“07”

SAE Flange ports on suction and delivery





Performance data, Dimensions and port details

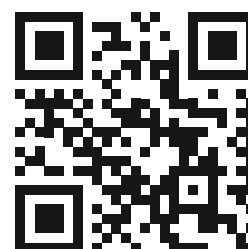
Type	Displacement cc/rev	Max pressure			Max Speed (r/min)	Min Speed (r/min)	Dimension									
		P1	P2	P3			M	L	A	B	C	D	a	b	c	d
		bar	bar	bar			mm	mm	mm	mm	mm	mm	mm	mm	mm	mm
TPF2G4 M1X-040	40	250	265	280	2750	600	189	108	60	30	M10	32	52	26	M10	25
TPF2G4 M1X-050	50	250	265	280	2750	600	195	111	60	30	M10	32	52	26	M10	25
TPF2G4 M1X-063	63	250	265	280	2750	500	203	115	60	30	M10	32	52	26	M10	25
TPF2G4 M1X-071	71	230	250	270	2500	500	208	117	70	36	M12	35	60	30	M10	32
TPF2G4 M1X-080	80	230	250	270	2500	500	213	120	70	36	M12	35	60	30	M10	32
TPF2G4 M1X-090	90	200	230	250	2500	500	219	123	70	36	M12	40	60	30	M10	32
TPF2G4 M1X-100	100	200	230	250	2500	500	225	126	70	36	M12	40	60	30	M10	32

The specified data is for product description purposes only and may not be deemed to be guaranteed unless expressly confirmed in the contract.



THM Huade Hydraulics Pvt Ltd

F-127, Phase-VIII, Focal Point,
Ludhiana-141010, Punjab (INDIA)
PH: 0161-2672777, 0161-2672778
E-mail: sales@thmhuade.com
Website: www.thmhuade.com



Follow us:

